



2009-10
PRODUCT CATALOG



LEGENDS™ Signature Series

It began with a New Standard™, and has become the Gold Standard of bowling.

Features include:

- Solid resin 2-piece construction (no filler)
- Surface Tuning System sample pack*

Angularity in a Solid Particle. The Best of Both Worlds!



NEW

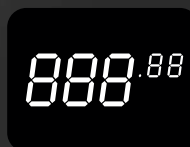
Black Diamond™

Color: Solid Black
 Core: Dynasty™
 Cover: Traction™ Diamond
 Type: Solid Particle (Medium Load)
 Reaction: The most angular solid particle ball we have ever released.



Black Pearl™

Color: Black Pearl
 Core: Dynasty™
 Cover: Traction Reactive XLP™
 Type: Particle Pearl (Light Load)
 Reaction: A clean and progressively stronger transition from skid to hook makes this versatile ball one of our most popular releases to date.



Black Pearl™ Reactive

Color: Charcoal Gray
 Core: Dynasty™
 Cover: Traction Reactive™ Pearl
 Type: Reactive Pearl
 Reaction: Designed to go longer than the Black Pearl™ with a sharper back end movement.



* Sample Pack includes: 2 oz Ball Cleaner, 2 oz Factory Finish Polish, 1 Gray and 1 Burgundy Abrasive Pad



Max Performance

Lane Masters™ famous hitting power combined with maximum durability.

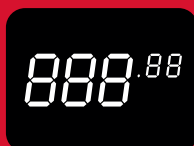
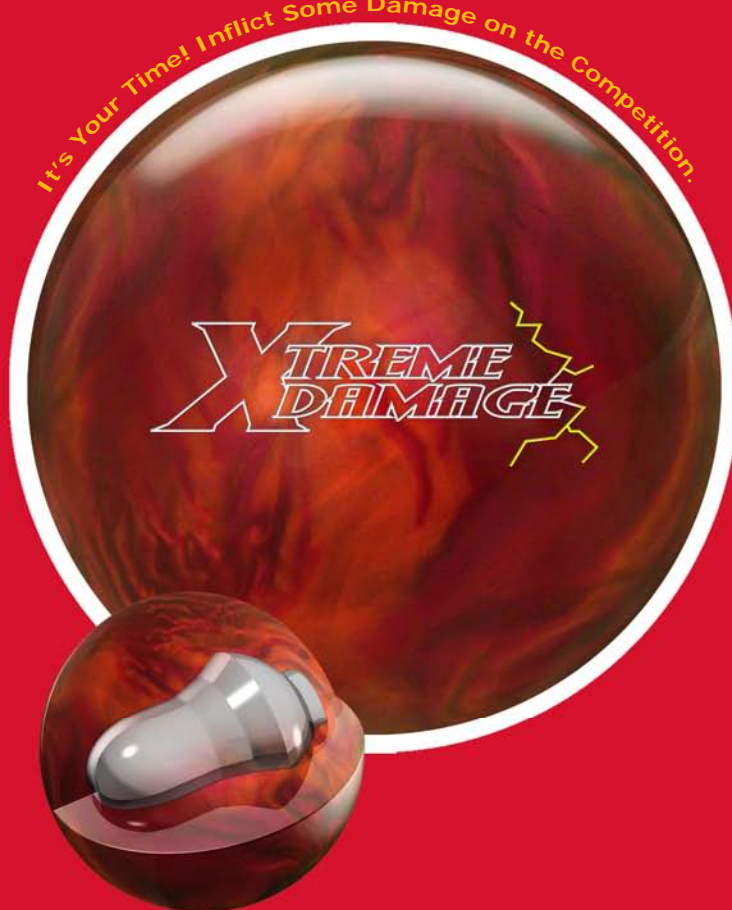


NEW*

Xtreme Damage™

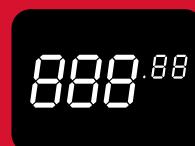
Color: Orange / Ruby
Core: Impact™
Cover: Endurance™ X-Treme
Type: Particle Pearl
Reaction: A purely aggressive back end motion for an extremely devastating hit.

It's Your Time! Inflict Some Damage on the Competition.



Hornet™

Color: Emerald Green
Core: Buzz™
Cover: Evolution HD™ Pearl
Type: Reactive Pearl
Reaction: Designed with a higher durometer for maximum performance on lighter oil conditions.



Buzz Attack™

Color: Purple / Blue
Core: Buzz II™
Cover: Endurance™ Micron
Type: Micron Pearl
Reaction: The unique additive of the Endurance Micron™ coverstock combined with a redesigned multi density core makes this the most versatile Buzz yet.



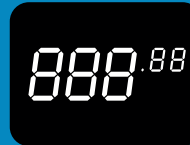


High Performance

5/8" of durable resin plus our lowest Rg core.
A powerful combination that is hard to beat.

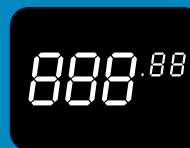


Energy Retaining Reactive Pearl with a Low Rg Core.



Dynamic Power™

Color: Red / Blue
Core: Power Centric™
Type: Solid Particle (Light Load)
Reaction: The low Rg core gives a bowler the ability to create an earlier breakpoint on heavier oil patterns.



Ultimate Power™

Color: Purple / Red
Core: Power Centric™
Type: Reactive Pearl
Reaction: The pearlized cover and low Rg core create a smooth mid-lane read with maximum energy retention.

NEW*

* Available Winter 2009

Ball Specifications

Ball	Rg	Diff	Flare	Core	Coverstock	Type	Durometer	Finish
LEGENDS™ Signature Series								
Black Diamond™	2.559	0.055	6.5"	Dynasty™	Traction™ Diamond	Solid Particle	74-75	Factory Polish
Black Pearl™ Reactive	2.559	0.055	6.5"	Dynasty™	Traction™ Pearl	Reactive Pearl	74-75	1200 Sheen
Black Pearl™	2.560	0.055	7"	Dynasty™	Traction XLP™	Particle Pearl	73-74	1000 Sheen
Max Performance								
Extreme Damage™	2.570	0.050	6"	Impact™	Endurance™ X-Treme	Particle Pearl	74-75	Factory Polish
Buzz Attack™	2.503	0.039	5"	Buzz II™	Endurance™ Micron	Micron Pearl	74-75	1200 Sheen
Hornet™	2.555	0.031	4"	Buzz™	Evolution HD™ Pearl	Reactive Pearl	78-79	Factory Polish
High Performance								
Ultimate Power™	2.465	0.047	6.5"	Power Centric™		Reactive Pearl	74-75	Factory Polish
Dynamic Power™	2.465	0.047	6.5"	Power Centric™		Solid Particle	73-74	800 Matte
Performance Plus								
Solid Strike™	2.584	0.042	5.25"	Impact™		Reactive Pearl	74-75	Factory Polish



Plus Performance

Exceptional performance.
Mid price. That's a Plus!



NEW

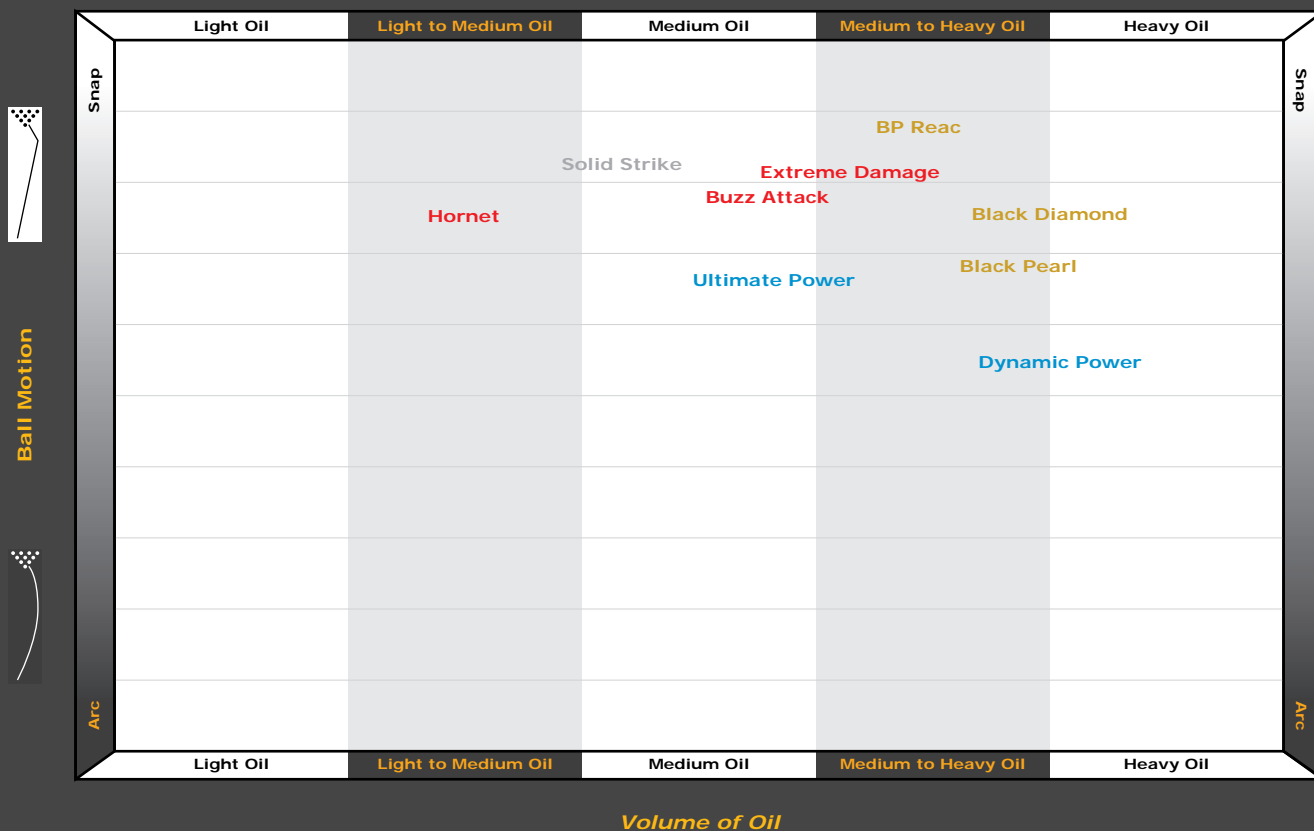
Solid Strike™

Color: Purple
Core: Impact™
Type: Reactive Pearl
Reaction: Clean through the front of the lane with an angular back end.



Box Finish Ball Reaction Comparison

This chart illustrates where each ball in our line has been designed to perform in an "out of the box" state, which oil pattern the ball is generally intended for, and the overall ball reaction one might expect from that particular ball. Of course, many variables come into play, and no two bowlers are exactly alike, so your individual results may vary. The main focus is to see how each ball relates to one another in building your bowling arsenal.



- **Ball Line:** LEGENDS™ Signature Series / Max Performance / High Performance / Plus Performance
- **Ball Motion:** Refers to the overall hook shape, ranging from angular (skid/snap) to arcing (smooth, constant motion).
- **Volume of Oil:** Refers to the lane condition (amount of oil) the ball will typically perform best on for the largest percentage of bowlers.



SPORT BAGS
Value with Style!



Sport Bag Features:

- Durable 1200 Denier polyester
- 1680 Denier polyester trim with reinforced stitching
- Compression molded Dobby material (excluding 1 ball tote)
- Lane Masters™ rubberized name tag
- Lane Masters™ logo
- **Limited 1 year warranty**



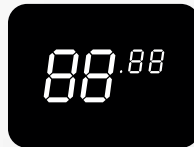
3 Ball Sport Roller

- Mens U.S. size 15 vented shoe compartment
- Locking retractable handle with molded grip
- Strong, reinforced lift handles
- Heavy duty injection molded base
- 5" beveled wheels
- Mesh storage pouch



2 Ball Sport Roller

- Mens U.S. size 15 vented shoe compartment
- Retractable handle with molded grip
- Strong, reinforced lift handle
- Compact injection molded base
- Sturdy wheels with rubber tread
- Mesh storage pouch



3 Ball Rolling Sport Tote

- Heavy duty recessed wheels
- Heavy duty pull strap
- Embroidered carry handle
- Transparent top for easy ball identification
- Accessory compartment
- Double ended zippers



2 Ball Sport Tote

- Embroidered padded shoulder strap
- Embroidered carry handle
- Transparent top for easy ball identification
- Shoe/Accessory compartment
- Heavy duty hardware
- Mesh storage pouches



1 Ball Sport Tote

- Use as a 1 ball tote or attach to any of our 2 or 3 ball roller bags for added capacity.
- Velcro attachment straps
 - Sturdy shoulder strap
 - Transparent top for easy ball identification
 - Accessory pouch



PREMIER BAGS

Classic and Classy!

A look you can't get anywhere else in the industry!



Premier Roller Features:

- Durable synthetic leather with heavy duty stitching
- Mens U.S. size 15 vented shoe compartment
- Locking retractable handle with molded grip
- Lane Masters™ rubberized name tag
- Heavy duty injection molded base
- Sturdy lift handles on each end
- 5" beveled wheels
- Embroidered 2-color logos
- Lane Masters™ logo
- **Limited 1 year warranty**



3 Ball Premier Roller

- 3 various size accessory pouches
- Partitioned shoe compartment for additional storage



2 Ball Premier Roller

- 2 oversized accessory pouches
- 1 front accessory pouch



1 Ball Premier Tote

- Use as a 1 ball tote or attach to any of our 2 or 3 ball roller bags for added capacity.
- Durable synthetic leather
 - Velcro attachment straps
 - Built-in sturdy shoulder strap
 - Transparent top panel with dual zippers
 - **Limited 1 year warranty**



SURFACE TUNING SYSTEM Ball Cleaners and Wash

High Performance Cleaner

Specially formulated by the same in-house chemists who make our lane conditioners and cleaners. Our unique blend of cleansing agents get deeper into the surface of today's high performance coverstocks, drawing out more dirt and oil than ordinary ball cleaners.

- Cleans tough jobs with little to no effort
- Safe for all types of bowling balls
- Evaporates quickly
- Leaves no oily residue



*Note - Lane Masters™ Surface Tuning System products are not approved for use during USBC competition.

NEW I-Tack™ Ball Cleaner

Get a grip on the lanes with our new Instant Tack Ball Cleaner. We tweaked our already powerful Ball Cleaner with a specially formulated "tack agent" for a super tacky feel any time.

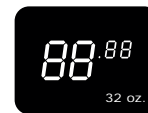
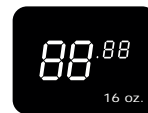
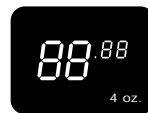
- Quickly revives balls that have lost their reaction
- Cuts through tough jobs fast
- Safe for all types of bowling balls
- Leaves a super tacky feel



NEW Pure Clean™ Ball Wash

A super concentrated, deep cleansing ball wash specifically formulated to emulsify deep down dirt and lane oil. Just mix with hot tap water in a bucket, place the ball to be cleaned in the solution for 15 min., drain, and dry. All that's left to do is to watch and enjoy your renewed ball reaction!

- Super Concentrated - Mix 1 oz. per 1 gal. of water!
- Draws out dirt and lane oil
- Leaves no soapy residue





SURFACE TUNING SYSTEM

Ball Polish and Compound

Factory Finish Polish

The same polish used in production, our factory formula provides a high luster finish that will increase length through the mid lane while maintaining a strong backend movement down the lane.

- Increases length down the lane
- Increases backend motion
- Minimal change in overall hook
- Restores surface "tack"
- Polishes to a 2000 grit shine



Professional Supplies for Professional Results

Bowling balls come in a wide variety of finishes. Sometimes you may find it beneficial to resurface or refinish your ball to how it left the factory. Or maybe you want to experiment with a different surface than how it arrived to you. Our Surface Tuning System has all the essentials to finish and maintain your equipment for a fine tuned reaction that fits your game.



Extended Length (XL) Polish

Great for bowlers who want the ball to get further down the lane while reducing the amount of overall hook.

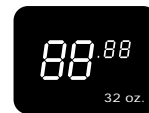
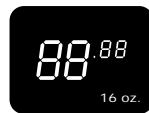
- Increases length down the lane
- Decreases backend motion
- Decreases overall hook
- Restores surface "tack"
- Polishes to a 3000 grit shine



Surface Cutting Compound

If abrasive pads are creating too early of a reaction, and polish gives you too much length, then this is the one for you!

- Achieves an aggressive, mildly polished finish
- Try using over lower grit (400 - 800) surfaces for an aggressive finish that retains energy well.
- Results in a high tack 1200 - 1500 grit finish



NEW



88.88

Surface Tuning Kit

- 4 oz. High Performance Ball Cleaner
- 4 oz. Factory Finish Polish
- 4 oz. Extended Length Polish
- 4 oz. Pure Clean™ Ball Wash
- 1 Large Burgundy Abrasive Pad
- 1 Large Gray Abrasive Pad
- 1 Large White Abrasive Pad
- 1 Lane Masters™ See Saw

Professional Value Packs

Two value packs to choose from:

88.88

3-Pack

3-Pack

- 32 oz. High Performance Ball Cleaner (Spray*)
- 32 oz. Factory Finish Polish
- 32 oz. Pure Clean™ Ball Wash

88.88

4-Pack

4-Pack

- 32 oz. High Performance Ball Cleaner (Refill)
- 32 oz. Factory Finish Polish
- 32 oz. Pure Clean™ Ball Wash
- 32 oz. Surface Cutting Compound



NEW

Have you ever wanted to restore the "Out-of-Box" finish to your ball?

Visit the all-new Lane Masters™ website for step-by-step instructions on how we finish each ball at the factory. Plus learn great tips on properly maintaining your equipment on and off the lanes, safe ways to extract oil, and things you should never do to a bowling ball! While there, be sure to sign up for our new E-Newsletter for all the latest information on what is happening at Lane Masters!

www.lanemastersbowling.com

Surface Tuning Pads

Pack contains two mix 'n' match 4.25" x 6" abrasive pads.

- White (1000 - 1200 grit)
- Gray (800 - 1000 grit)
- Burgundy (400 - 600 grit)



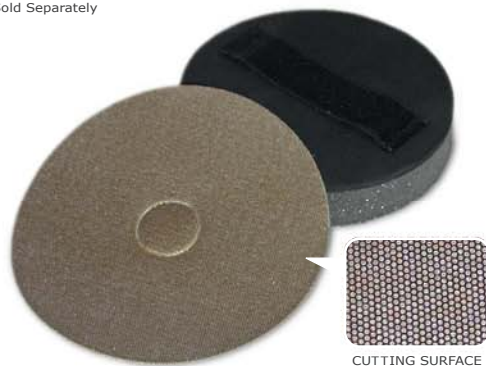
88.88

Diamond Cutting Disk / Hand Pad

Make the first step of your ball resurface a breeze with a long lasting 20 Micron Diamond Disk and Hook-It™ Hand Pad.

- 5" 20 Micron Diamond Cutting Disk
- 5" Foam Backed Hook-It™ Hand Pad

Each Sold Separately



88.88

Disk

88.88

Pad



Sport Polo Shirt

Lane Masters™ Exclusive Design

The Dry Mesh material wicks away moisture for a cool, comfortable fit. Includes embroidered Lane Masters™ logos on the left chest and sleeve.

*Additional charges may apply for 2XL and 3XL.

- Color: Black with red / gray
- Material: 60 / 40 cotton poly blend
- Sizes: S - 3XL*



APPAREL / ACCESSORIES

The goods to keep you looking and performing your best.



Bag



Ball



Hand Conditioners

Super absorbent micro fiber material keeps hands dry for a consistent grip.

- Grip Bag: 5.5" x 3.75"
- Grip Ball: 3" Dia.



Micro Fiber Towel

Excellent for drawing moisture and oil away from the surface of your ball. Machine washable. Safe for use with most ball cleaners and polishes.

- Size: 16" x 23.5"



Power Stroke



Limited Availability

Lane Masters™ Exclusive Design

Wrist positioner plus release booster.

- Contoured steel construction
- Spring loaded release booster
- Dual position booster arm
- Adjustable wrist position
- Lateral wrist adjustment
- Freely pivoting wrist
- Comfortable velcro straps
- Chrome nameplate



HAND CRAFTED BOWLING BALLS

Made in the U.S.A.

From the first ball produced in 2002, through our latest creations, Lane Masters™ has been hand crafting every resin ball to leave our factory. Our expert craftsmen produce each ball in small batches at our own Stockton, CA manufacturing facility. This hands on approach to manufacturing begins with the pouring of weightblocks, and continues all the way through, until the factory finish has been applied.

Of course, all this wouldn't matter much if we didn't use quality materials. Our exclusive formula of grade "A" resins resist wear and are less susceptible to oil soaking. Other premium additives include particles derived from carbon, one of the hardest known substances. We have even gone as far as to use real diamond particles in some of our balls!

The fact is, no matter which Lane Masters™ ball you choose, one thing will hold true. Each ball receives the same high quality craftsmanship and will perform at a consistently high level for a longer period of time.



www.lanemastersbowling.com