



BOWLING CATALOG

2016-2017



ABS

ABS International Corp.

www.abs300.com

www.absbowling.co.jp

BALLS

2016-2017



GALAXY



MERCURY



JUPITER



VENUS



MARS

ABS
GALAXY



	Coverstock	Core	Finish	RG	△RG	Inter Diff	Hardness	Weights
MERCURY	GX 8.0	Modified Premium Core	600Polish	2.480	0.046	0.011	74	10-16 lbs
JUPITER	GX 7.5		1,000Polish					
VENUS	GX 7.0		3,000Polish					
MARS	GX 6.5		10,000Polish					

NANODESU



NANODESU ACCU ROLL 4



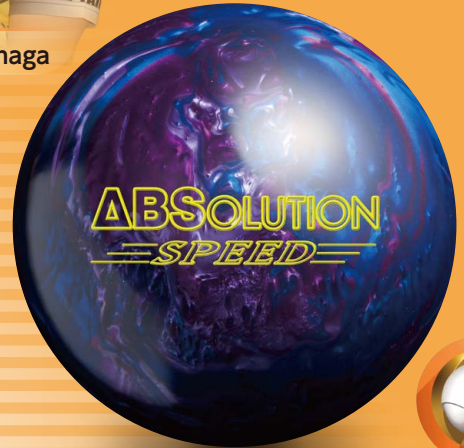
Coverstock Nanoflex84 Hybrid With Fullerene C60
 Core Spin Shuttle
 RG 2.460 ΔRG 0.054
 Hardness 74°-76°
 Inter Diff 0.0123
 Weights 11-16lbs



Hiromi Matsunaga



Daisuke Tasaka



ABSOLUTION SPEED



Coverstock SPEED REACTIVE
 Core Modified Premium Core
 Finish Abralon 600, 1000, 2000
 Diamond Compound Polish
 RG 2.470 ΔRG 0.011
 Hardness 72°-73°
 Weights 11-16lbs



COLUMBIA 300

SWERVE FX

Coverstock Reflex Pearl
 Core SWERVE
 Finish 500, 1000 Abralon
 Polished w/Powerhouse
 Clean N' Sheen
 RG 2.470 ΔRG 0.052
 Hardness 74°-76°
 Inter Diff 0.007
 Weights 12-16lbs

Made in U.S.A



Isao Yamamoto



Yuka Kishida



NEW

NEW

NEW

WHITE DOT

Coverstock Polyester
 Hardness 80°-83°

Made in U.S.A



Lime/Slime (9-15lbs)



Pink/Black (9-15lbs)



Patriot (9-15lbs)



Blue/Black/Silver (9-16lbs)

TRACK



Ayumi Kobayashi



Naoyuki Iguchi

PARADOX PEARL

Coverstock SSF 72 Pearl Reactive
(Super Soft Flexible)
Core I-Core2.0(Middle Heavy)
Finish 500. 1000 Abralon polished
(Clean N'sheen)
RG 2.480 ΔRG 0.057
Hardness 74°-76°
Inter Diff 0.015
Weights 12-16lbs



Made in U.S.A



NATURAL ENEMIES



Urara Himeji

PANTHER

Coverstock LCD-80
(Low Crosslink Density)
Core Modified 3M Core(CEH)
Finish 500. 2000 Abralon Polish
RG 2.470 ΔRG 0.055
Hardness 74°-76°
Weights 12-16lbs



Made in U.S.A



Hidekazu Wada



MOTIV



Natsumi Koizumi



Yoshimi Kitaoka

PARANOIA

Coverstock Agitator Pearl Reactive
Core Oblivion
Finish 5500 Grit LSP
RG 2.530 ΔRG 0.047
Hardness 74°-76°
Weights 12-16lbs



Made in U.S.A



900 GLOBAL



Sanae Mori



Naoharu Okabe



Chris Barnes



DREAM BIG PEARL

Coverstock 79 Alert Pearl
 Core Identity(TM) Asymmetric
 Finish 1500 Grit Polish
 RG 2.480 ΔRG 0.054
 Hardness 74°-76°
 Inter Diff 0.024
 Weights 12-16lbs

Made in U.S.A



RESPECT SOLID

Coverstock 78 Dig Solid
 Core Tetra Symmetric
 Finish Neat T
 RG 2.490 ΔRG 0.052
 Hardness 74°-76°
 Weights 12-16lbs

Made in U.S.A



BOOST

Core Launch Sym
 Finish 2000 Grit Polished
 RG 2.540 ΔRG 0.043
 Hardness 74°-76°
 Weights 10-16lbs

Made in U.S.A



Black/Red

Coverstock S43 Solid



Purple/Blue

Coverstock S43 Pearl



Blue/Cream

Coverstock S43 Hybrid



Red/Cream

Coverstock S43 Hybrid



PRO-AM



Mayumi Yoshida



Yuya Katoh

COMMANDER CHIEF

Coverstock Premium Pearl Reactive
 Core Command Dual Density Core
 Finish 4000 Grit Abralon
 RG 2.500 ΔRG 0.048
 Hardness 74°-76°
 Inter Diff 0.011
 Weights 12-16lbs

Made in U.S.A





LRG (10-16lbs)



MRG (8-16lbs)



HRG (10-16lbs)



ABS Gyraton

Coverstock NT1
 Core [LRG] Low Rider
 [MRG] Cruiser
 [HRG] Bullet
 RG/ Δ RG [LRG] 2.460/0.048
 [MRG] 2.500/0.058
 [HRG] 2.550/0.040
 Hardness [LRG] 1000 POLISH
 [MRG] 2000 POLISH
 [HRG] 4000 POLISH
 Weights 74-76



Red (8-16lbs)



Black (8-16lbs)



Purple (8-16lbs)



ABS Pin Navi2

Coverstock K-1 MAXX Reactive
 Core Mach Core
 RG 2.441 Δ RG 0.055
 Hardness 75°-78°



Black (8-15lbs)



Blue (8-15lbs)



Purple (6-16lbs)



ABS Jubilee

Coverstock Urethane
 Hardness 75°-78°



Black (8-15lbs)



Blue (8-15lbs)



Red (8-15lbs)



Purple (6-16lbs)



Pink (8-15lbs)



ABS LA VIE

Coverstock Polyester
 Hardness 78°-80°



Multi Black (12-16lbs)



Multi Blue (12-16lbs)



Multi Pink (12-16lbs)



ABS Sureline Hard

Coverstock Super Hard Polyester
 Hardness 82°-85°

BAGS

2016-2017



Rubber Handle



Double Zipper



Name Card Pocket



Outside Pocket



YKK Zipper



Silent Running
Urethane Wheels



Shoe Storage



Shoulder Strap



Features & Options

Production Number	B16-2380	B16-2180	B16-1580	B16-1380	TR-2300	TR-1520	TR-480	B16-1280	B16-1180	B16-820	B16-420	B16-550	B16-320	B16-300	B16-200	B16-099	B16-300P	B16-360NP	B16-180	
Page Reference	P 9	P 9	P 10	P 10	P 11	P 11	P 12	P 12	P 13	P 13	P 14	P 14	P 15	P 15	P 16	P 16	P 17	P 17	P 18	
Outside Pocket Useful pocket for accessories attached to the outside of the bag.		●	●	●	●	●	●	●	●	●	●	●	●	●	●	●	●	●	●	●
Shoe Storage Protects your shoes and keeps the bag clean.		●	●	●	●	●	●	●	●	●	●	●	●	●	●	●	●	●	●	●
Air Vents Allows for excellent ventilation and air circulation to help prevent odor and bacterial growth.		●	●	●	●	●	●	●	●	●	●	●	●	●	●	●	●	●	●	●
Waist Pad Added comfort and support.		●	●	●	●	●	●	●	●	●	●	●	●	●	●	●	●	●	●	●
Foam Insulation Special foam inner lining.		●	●	●	●	●	●	●	●	●	●	●	●	●	●	●	●	●	●	●
Name Card Pocket Personalize with your name by inserting a card with the appropriate lettering.		●	●	●	●	●	●	●	●	●	●	●	●	●	●	●	●	●	●	●
Rubber Handle Very useful when carrying and picking up.		●	●	●	●	●	●	●	●	●	●	●	●	●	●	●	●	●	●	●
See-Through Allows to see the inside without opening.		●	●	●	●	●	●	●	●	●	●	●	●	●	●	●	●	●	●	●
Accessory Box Plastic accessory box for all of your accessories and supplies. (The design is subject to change.)		●	●	●	●	●	●	●	●	●	●	●	●	●	●	●	●	●	●	●
Silent Running Urethane Wheels Smooth and silent urethane wheels with easy glide bearings. Durability is unsurpassed.		●	●	●	●	●	●	●	●	●	●	●	●	●	●	●	●	●	●	●
Wide Urethane Casters Heavy loads roll smoothly.		●	●	●	●	●	●	●	●	●	●	●	●	●	●	●	●	●	●	●
Big Shoulder Pad OPTION Featuring thick sponge padding to help reduce pressure on shoulder and back.		●	●	●	●	●	●	●	●	●	●	●	●	●	●	●	●	●	●	●
Curved Shoulder Pad 8-mm thick. The Curve fits the shoulder like a glove.		●	●	●	●	●	●	●	●	●	●	●	●	●	●	●	●	●	●	●
Standard Shoulder Pad Made of non-slip rubber for added support.		●	●	●	●	●	●	●	●	●	●	●	●	●	●	●	●	●	●	●
Shoulder Strap Easy to attach hook. (attachable to B16-200 only.)		●	●	●	●	●	●	●	●	●	●	●	●	●	●	●	●	●	●	●
Attachment Belt OPTION for B16-200 Easy to attach B16-200 to the cart handle.		●	●	●	●	●	●	●	●	●	●	●	●	●	●	●	●	●	●	●
Urethane Front Wheel OPTION Attaches to carts, made of smooth and silent rolling urethane.		OP	OP	OP	OP	OP	OP	OP	OP	OP	OP	OP	OP	OP	OP	OP	OP	OP	OP	OP
Pulling Strap OPTION Easy to attach hook.		OP	OP	OP	OP	OP	OP	OP	OP	OP	OP	OP	OP	OP	OP	OP	OP	OP	OP	OP
Deluxe Pulling Strap OPTION Firm rubber handle for easy pulling.		OP	OP	OP	OP	OP	OP	OP	OP	OP	OP	OP	OP	OP	OP	OP	OP	OP	OP	OP
Double Zipper For more packing flexibility in any situation.		●	●	●	●	●	●	●	●	●	●	●	●	●	●	●	●	●	●	●
YKK Zipper World famous fasteners		●	●	●	●	●	●	●	●	●	●	●	●	●	●	●	●	●	●	●

OP Options Sold Separately



Black



Blue



B16-2380

Dimensions : 550×810×380mm
Materials : 1680D Polyester, PVC



Features

- Silent Running Urethane Wheels
- Name Card Pocket
- Foam Insulation
- Air Vents
- Accessory Box
- Rubber Handle
- Shoe Storage
- Outside Pocket
- Double Zipper
- YKK Zipper

Options

- Urethane Front Wheel
- Pulling Strap
- Duluxe Pulling Strap



Red / Yellow



Black



Pink / Navy



Blue



B16-2180

Dimensions : 530×810×370mm
Materials : 1680D Polyester, PVC



Features

- Silent Running Urethane Wheels
- Name Card Pocket
- Foam Insulation
- Air Vents
- Accessory Box
- Rubber Handle
- Shoe Storage
- Outside Pocket
- Double Zipper
- YKK Zipper

Options

- Urethane Front Wheel
- Pulling Strap
- Duluxe Pulling Strap



Pink / Navy



Black



Red / Yellow



Blue



B16-1580

Dimensions : 500×610×360mm
Materials : 1680D Polyester



Features

- Silent Running Urethane Wheels
- Big Shoulder Strap
- Waist Pad
- NAME Name Card Pocket
- Foam Insulation
- Air Vents
- Rubber Handle
- Shoe Storage
- Outside Pocket
- Double Zipper
- YKK Zipper
- Urethane Front Wheel
- Pulling Strap
- Duluxe Pulling Strap

Options



Red / Yellow



Blue



Black



Pink / Navy



B16-1380

Dimensions : 480×510×350mm
Materials : 1680D Polyester



Features

- Silent Running Urethane Wheels
- Curved Shoulder Pad
- Waist Pad
- NAME Name Card Pocket
- Foam Insulation
- Air Vents
- Rubber Handle
- Shoe Storage
- Outside Pocket
- Double Zipper
- YKK Zipper
- Urethane Front Wheel
- Pulling Strap
- Duluxe Pulling Strap

Options



TEAM COLUMBIA 300

TEAM NANODESU

TEAM MOTIV

TEAM NATURAL ENEMIES

TEAM 900 GLOBAL

TEAM TRACK

TEAM PRO-am



TB-2300

Dimensions : 530×810×370mm
Materials : 1680D Polyester, PVC



Features

- Silent Running Urethane Wheels
- Name Card Pocket
- Foam Insulation
- Air Vents
- Accessory Box
- Rubber Handle
- Shoe Storage
- Outside Pocket
- Double Zipper
- YKK Zipper

Options

- Urethane Front Wheel
- Pulling Strap
- Duluxe Pulling Strap



TEAM PRO-am

TEAM NANODESU

TEAM MOTIV

TEAM COLUMBIA 300

TEAM 900 GLOBAL

TEAM TRACK

TEAM NATURAL ENEMIES



TB-1520

Dimensions : 500×610×360mm
Materials : 1680D Polyester



Features

- Silent Running Urethane Wheels
- Curved Shoulder Pad
- Waist Pad
- Name Card Pocket
- Foam Insulation
- Air Vents
- Rubber Handle
- Shoe Storage
- Outside Pocket
- Double Zipper
- YKK Zipper

Options

- Urethane Front Wheel
- Pulling Strap
- Duluxe Pulling Strap



Curved Shoulder Pad



TEAM NANODESU



TEAM MOTIV



TEAM COLUMBIA 300



TEAM NATURAL ENEMIES



TEAM 900 GLOBAL



TEAM TRACK



TEAM PRO-am



TB-480

Dimensions : 230×430×230mm
Materials : 1680D Polyester



Features

- Curved Shoulder Pad
- See-Through
- Foil Insulation
- Outside Pocket
- Double Zipper
- YKK Zipper



Blue



Black



Red / Yellow



B16-1280

Dimensions : 700×240×240mm
Materials : 1680D Polyester



Features

- Name Card Pocket
- Foil Insulation
- Rubber Handle
- Double Zipper
- YKK Zipper



Red / Yellow

Blue

Pink / Navy

Black



B16-1180

Dimensions : 510×410×360mm
Materials : 1680D Polyester

2

Features

- Wide Urethane Casters
- Curved Shoulder Pad
- Waist Pad
- Name Card Pocket
- Foam Insulation
- Air Vents
- Rubber Handle
- Shoe Storage
- Outside Pocket
- Pulling Strap
- Double Zipper
- YKK Zipper
- Duluxe Pulling Strap

Options



Pink / Navy

Blue

Red / Yellow

Black



B16-820

Dimensions : 360×420×320mm
Materials : 1680D Polyester, Embossed PVC

2

Features

- Wide Urethane Casters
- Curved Shoulder Pad
- See-Through
- Foam Insulation
- Double Zipper
- YKK Zipper
- Pulling Strap
- Duluxe Pulling Strap

Options





Red / Yellow



Black



Pink / Navy









B16-420

Dimensions : 230×430×230mm
Materials : 1680D Polyester



Features

-  Curved Shoulder Pad
-  See-Through
-  Foil Insulation
-  Outside Pocket
-  Double Zipper
-  YKK Zipper



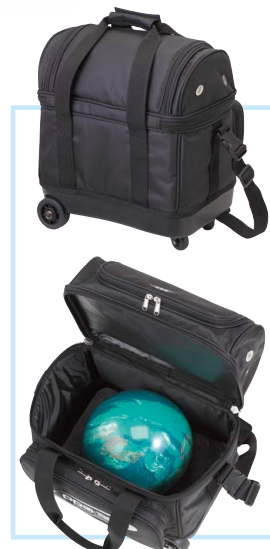
Black



Pink / Navy



Red / Yellow



B16-550

Dimensions : 360×400×320mm
Materials : 1680D Polyester



Features

-  Curved Shoulder Pad
-  Foil Insulation
-  Air Vents
-  Shoe Storage
-  Outside Pocket
-  Double Zipper
-  YKK Zipper



Blue



Red / Yellow



Black



Purple



Pink / Navy



Red



1



Beverage Holder



B16-320

Dimensions : 355×320×235mm
Materials : 1680D Polyester

Features



Standard Shoulder Pad



Air Vents



Shoe Storage



Outside Pocket



Double Zipper



YKK Zipper



Purple



Red / Yellow



Black



Pink / Navy



Blue



Red



1



B16-300

Dimensions : 300×325×250mm
Materials : 1680D Polyester

Features



Standard Shoulder Pad



Air Vents



Shoe Storage



Outside Pocket



Double Zipper



YKK Zipper



Pink / Navy

Purple

Blue

Red / Yellow

Red

Black



B16-200

Dimensions : 225×225×210mm
Materials : 1680D Polyester



Features



See-Through



Outside Pocket



Shoulder Strap



Double Zipper



YKK Zipper

Options



Attachment Belt



Red / Yellow



Purple



Blue



Red



Pink / Navy

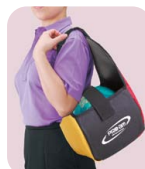


Black



B16-099

Dimensions : 540×230×220mm
Materials : 1680D Polyester





Red / Yellow



Pink / Navy



Black



B16-300P

Dimensions : 190×270×95mm
Materials : 1680D Polyester

Features



Accessory Box



Outside Pocket



Double Zipper



YKK Zipper



Pink



White



Blue



B16-360NP

Dimensions : 260×200×120mm
Materials : PU Enamel

Features



Double Zipper



YKK Zipper



Black



Red / Yellow



Pink / Navy



B16-180

Dimensions : 350×230×130mm
Materials : 1680D Polyester

Features



Shoe Storage



YKK Zipper



Pro-am Tour 4

Dimensions : 690×500×265mm
Materials : Duralumin
•Available by order



4



Pro-am Tour 2

Dimensions : 450×500×260mm
Materials : Duralumin
•Available by order



2

SHOES

2016-2017

● Enhanced kick sole

● Improved sole ventilation

● Mackay construction

NV-KID

● Reinforced firm construction

● Upgraded construction for superior stability

● Impact absorbent insole

● Premium leather

● Premium lace plate





Shoes DIY Parts

for NV-4/NV-3/NV-KID
S-1500W/S-1230/S-950/S-570

D.I.Y. Slide Parts

Velcro Lined.
Cut to the sole of
your shoe.



1 Teflon
90×130mm



2 Felt
180×130mm



3 Chrome Leather
180×130mm



4 Deer Skin
180×130mm



5 Micro Leather
180×130mm



6 Back Skin
180×130mm



7 Oiled Nu-buck
180×130mm

D.I.Y. Cleat Type Slide Parts for NV-3

Velcro lined.
Use with Slide Cleats.

S 22.0 ~ 23.0	6	L 25.0 ~ 26.5	7
M 23.5 ~ 24.5 (cm) holes		LL 27.0 ~ 28.0 (cm) holes	



2 Felt



3 Chrome Leather



4 Deer Skin



6 Back Skin



7 Oiled Nu-buck

D.I.Y. Cleat Type Slide Parts for NV-4

Velcro lined.
Use with Slide Cleats.

S 22.0 ~ 23.0	5	L 25.0 ~ 26.5	6
M 23.5 ~ 24.5 (cm) holes		LL 27.0 ~ 28.0 (cm) holes	



2 Felt



3 Chrome Leather



4 Deer Skin



6 Back Skin



7 Oiled Nu-buck

D.I.Y. Slide Cleats

Velcro lined.
Set of 7 pcs.
Use with Cleat Type Slide Bases.



1 Teflon



2 Felt



3 Chrome Leather



4 Deer Skin



6 Back Skin



7 Oiled Nu-buck

D.I.Y. Slide Heels

Velcro lined.



1 Flat Hard



2 Flat Normal



3 Groove Soft



4 Wave Soft



5 Back Skin



7 Oiled Nu-buck

	(cm)
S	22.0 ~ 22.5
M	23.0 ~ 24.5
L	25.0 ~ 26.5
LL	27.0 ~ 28.0

More Slide

Less Slide



1



2



3



4



5

More Slide

Less Slide

TRICOLOR

	(cm)
S	22.0 ~ 24.5
M	25.0 ~ 26.5
L	27.0 ~ 28.0
LL	29.0 ~ 30.0

Kick Parts



Rubber

D.I.Y. Toe Cap w/ Kevlar

Left or right.

	(cm)
S	22.0 ~ 23.5
M	24.0 ~ 25.5
L	26.0 ~ 27.5
LL	28.0 ~ 30.0



Velcro lined.



Glue not included.

D.I.Y. Kick Heel

Velcro lined.

	(cm)
S	22.0 ~ 22.5
M	23.0 ~ 24.5
L	25.0 ~ 26.5
LL	27.0 ~ 28.0



D.I.Y. Rubber for NV-KID

22.0-22.5, 23.0-23.5, 24.0-24.5,
25.0-25.5, 26.0-26.5, 27.0-27.5,
28.0- (7sizes)



Shoe Bag

39×33cm





White/Silver



Black/Black

SIZE
EE
SIZE



		20.0	21.0	22.0	22.5	23.0	23.5	24.0	24.5	25.0	25.5	26.0	26.5	27.0	27.5	28.0	28.5	29.0	29.5	30.0
Black/Black	Right	—	—	○	○	○	○	○	○	○	○	○	○	○	○	○	—	—	—	—
	Left	—	—	○	○	○	○	○	○	○	○	○	○	○	○	○	—	—	—	—
White/Silver	Right	—	—	○	○	○	○	○	○	○	○	○	○	○	○	○	—	—	—	—
	Left	—	—	○	○	○	○	○	○	○	○	○	○	○	○	○	—	—	—	—

KANGAROO SHOES



Materials : Ultra-Fine Kangaroo Leather,
EVA, Rubber, Velcro

Accessories



Black/Black



White/Silver

SIZE
EE
SIZE



		20.0	21.0	22.0	22.5	23.0	23.5	24.0	24.5	25.0	25.5	26.0	26.5	27.0	27.5	28.0	28.5	29.0	29.5	30.0
Black/Black	Right	—	—	○	○	○	○	○	○	○	○	○	○	○	○	○	—	—	—	—
	Left	—	—	○	○	○	○	○	○	○	○	○	○	○	○	○	—	—	—	—
White/Silver	Right	—	—	○	○	○	○	○	○	○	○	○	○	○	○	○	—	—	—	—
	Left	—	—	○	○	○	○	○	○	○	○	○	○	○	○	○	—	—	—	—

KANGAROO SHOES



Materials : Kangaroo Leather,
EVA, Rubber, Velcro

Accessories



White/Beige



Black/Black



		20.0	21.0	22.0	22.5	23.0	23.5	24.0	24.5	25.0	25.5	26.0	26.5	27.0	27.5	28.0	28.5	29.0	29.5	30.0
Right & Left	Black/Black	—	—	—	—	○	○	○	○	○	○	○	○	○	○	○	—	—	—	—
	White/Beige	—	—	○	○	○	○	○	○	○	○	○	○	○	○	○	—	—	—	—

Accessories



Deer Skin Slide Base



Rubber



Slide Heel x2



Shoe cover



Shoe bag



NV-KID

Materials : Kid Leather

Black



White



		20.0	21.0	22.0	22.5	23.0	23.5	24.0	24.5	25.0	25.5	26.0	26.5	27.0	27.5	28.0	28.5	29.0	29.5	30.0
Right only	Black	—	—	○	○	○	○	○	○	○	○	○	○	○	○	○	—	○	—	○
	White	—	—	○	○	○	○	○	○	○	○	○	○	○	○	○	—	—	—	—

Accessories



Felt



Deer Skin



Back Skin



Shoe bag



Shoe cover



Kick Heel x2



TRICOLOR 24



S-1500W

Materials : Fine Microfiber, Soft EVA, Velcro



Black/Silver



White/Silver

SIZE
EE
SIZE



		20.0	21.0	22.0	22.5	23.0	23.5	24.0	24.5	25.0	25.5	26.0	26.5	27.0	27.5	28.0	28.5	29.0	29.5	30.0	
Right & Left	Black/Silver	—	—	—	—	—	—	—	○	○	○	○	○	○	○	○	○	—	○	—	○
	White/Silver	—	—	○	○	○	○	○	○	○	○	○	○	○	○	○	○	—	—	—	—

ABS
D.I.Y.

S-1230

Materials : Fine Microfiber, Soft EVA, Velcro

Accessories



Black/Silver



White/Silver



Black/Black



Black/Wine

SIZE
EE
SIZE



		20.0	21.0	22.0	22.5	23.0	23.5	24.0	24.5	25.0	25.5	26.0	26.5	27.0	27.5	28.0	28.5	29.0	29.5	30.0	
Right & Left	Black/Black	—	—	○	○	○	○	○	○	○	○	○	○	○	○	○	○	—	○	—	○
	White/Silver	—	—	○	○	○	○	○	○	○	○	○	○	○	○	○	○	—	—	—	—
	Black/Silver	—	—	—	—	—	—	—	—	○	○	○	○	○	○	○	○	—	—	—	—
	Black/Wine	—	—	○	○	○	○	○	○	○	○	—	—	—	—	—	—	—	—	—	—

ABS
D.I.Y.

S-950

Materials : PU, PU Enamel, Soft EVA, Velcro

Accessories





Black/Gold



White/Silver

White/Pink



		20.0	21.0	22.0	22.5	23.0	23.5	24.0	24.5	25.0	25.5	26.0	26.5	27.0	27.5	28.0	28.5	29.0	29.5	30.0	
Right & Left	Black/Gold	—	—	○	○	○	○	○	○	○	○	○	○	○	○	○	○	—	—	—	—
	White/Silver	—	—	○	○	○	○	○	○	○	○	○	○	○	○	○	○	—	—	—	—
	White/Pink	—	—	○	○	○	○	○	○	○	—	—	—	—	—	—	—	—	—	—	—



S-770

Materials : PU



New EVA Cushion Sole

Accessories



Felt

Micro Leather

Rubber



Black/Wine



White/Silver



Black/Black



Black/Silver



		20.0	21.0	22.0	22.5	23.0	23.5	24.0	24.5	25.0	25.5	26.0	26.5	27.0	27.5	28.0	28.5	29.0	29.5	30.0	
Right & Left	Black/Black	—	—	○	○	○	○	○	○	○	○	○	○	○	○	○	○	—	○	—	○
	White/Silver	—	—	○	○	○	○	○	○	○	○	○	○	○	○	○	○	—	—	—	—
	Black/Silver	—	—	—	—	—	—	○	○	○	○	○	○	○	○	○	○	—	—	—	—
	Black/Wine	—	—	○	○	○	○	○	○	○	—	—	—	—	—	—	—	—	—	—	—

Accessories



Felt

Micro Leather

Rubber

Shoe bag



D.I.Y.

S-570

Materials : PU, PU Enamel, EVA, Velcro



Red/Grey



Blue/Grey



Black/Black



New EVA Cushion Sole



S-550

Materials : PU

		Extra Shoelaces	20.0	21.0	22.0	22.5	23.0	23.5	24.0	24.5	25.0	25.5	26.0	26.5	27.0	27.5	28.0	28.5	29.0	29.5	30.0
Right only	Black/Black	Black/Grey	—	—	○	○	○	○	○	○	○	○	○	○	○	○	○	—	—	—	—
	Red/Grey	Black/Red	—	—	○	○	○	○	○	○	○	○	○	○	○	○	○	—	—	—	—
	Blue/Grey	Black/Blue	—	—	○	○	○	○	○	○	○	○	○	○	○	○	○	—	—	—	—



② White/Dark Silver

⑥ White/Pink

① White/Black

⑤ Black/Silver

④ Black/Red

⑦ Black/Dark Brown

③ White/Red

⑧ Black/Bronze

SIZE
EE
SIZE



S-380

Materials : PU, PU mid-sole, Felt, Rubber

		20.0	21.0	22.0	22.5	23.0	23.5	24.0	24.5	25.0	25.5	26.0	26.5	27.0	27.5	28.0	28.5	29.0	29.5	30.0	
① White/Black	Right	○	○	○	○	○	○	○	○	○	○	○	○	○	○	○	○	○	○	○	○
	Left	—	—	○	○	○	○	○	○	○	○	○	○	○	○	○	○	○	○	○	○
② White/Dark Silver ③ White/Red ④ Black/Red ⑤ Black/Silver	Right	—	—	○	○	○	○	○	○	○	○	○	○	○	○	○	○	○	○	○	○
	Left	—	—	○	○	○	○	○	○	○	○	○	○	○	○	○	○	○	○	○	○
⑥ White/Pink	Right	—	—	○	○	○	○	○	○	○	○	○	○	○	○	○	○	○	○	○	○
	Left	—	—	○	○	○	○	○	○	○	○	○	○	○	○	○	○	○	○	○	○
⑦ Black/Dark Brown	Right	—	—	—	—	—	—	—	—	○	○	○	○	○	○	○	○	○	○	○	○
⑧ Black/Bronze	Right	—	—	—	—	—	—	—	○	○	○	○	○	○	○	○	○	○	○	○	○



Black/Black



White/Aqua



White/Red



Black/Silver

WIDE
EEE
SIZE

Right
Only



S-300

Materials : PU

		20.0	21.0	22.0	22.5	23.0	23.5	24.0	24.5	25.0	25.5	26.0	26.5	27.0	27.5	28.0	28.5	29.0	29.5	30.0	
Right only	Black/Black	—	—	○	○	○	○	○	○	○	○	○	○	○	○	○	○	○	○	○	○
	Black/Silver	—	—	○	○	○	○	○	○	○	○	○	○	○	○	○	○	○	○	○	○
	White/Aqua	—	—	○	○	○	○	○	○	○	○	○	○	○	○	○	○	○	○	○	○
	White/Red	—	—	○	○	○	○	○	○	○	○	○	○	○	○	○	○	○	○	○	○



White/Orange



Black/Black



White/Silver



White/Pink

White/Aqua Blue

SIZE
EE
SIZE



S-250 (ENTRY LEVEL)

Materials : PU

		20.0	21.0	22.0	22.5	23.0	23.5	24.0	24.5	25.0	25.5	26.0	26.5	27.0	27.5	28.0	28.5	29.0	29.5	30.0	
White/Silver	Right	○	○	○	○	○	○	○	○	○	○	○	○	○	○	○	○	○	○	○	○
	Left	—	—	○	○	○	○	○	○	○	○	○	○	○	○	○	○	○	○	○	○
Black/Black	Right	—	—	○	○	○	○	○	○	○	○	○	○	○	○	○	○	○	○	○	○
	Left	—	—	○	○	○	○	○	○	○	○	○	○	○	○	○	○	○	○	○	○
White/Aqua Blue	Right	—	—	○	○	○	○	○	○	○	○	○	○	○	○	○	○	○	○	○	○
	Left	—	—	○	○	○	○	○	○	○	○	○	○	○	○	○	○	○	○	○	○
White/Pink	Right	—	—	○	○	○	○	○	○	○	○	○	○	○	○	○	○	○	○	○	○
White/Orange	Right	—	—	○	○	○	○	○	○	○	○	○	○	○	○	○	○	○	○	○	○

GLOVES



Pro Bowler Mayumi Yoshida ©JPBA

Speed Dialer

Allows for a 3 way adjustment for quick changes on the lane. Simply turn the dialer clockwise to the required position. Adjustments can be as small as 1/10 of a millimeter.

ATS

Bellow the Axis Tilt (Right/Left angle) position adjustment for use in setting the Axis Tilt.

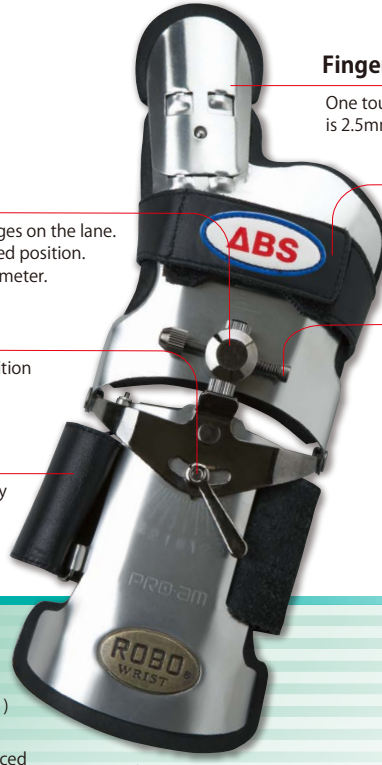
Velcro Wrist Belt

The super soft, thin, durable, high quality leather belt. Easily set by hook & loop fastener.

ABS Robo Wrist® (Japan PAT. 3259841)

Materials: Super light weight, Heavy duty, Reinforced duralumin.

Features: Finger and wrist support.



Stainless

Finger Support

One touch detachable finger tip (EVA Rubber is 2.5mm thick for added support).

Velcro Palm Belt

Hook and loop fasteners on both sides allow the belt to be adjusted to fit the palm perfectly. Super soft, thin and durable.

The spring acts as a lock to ensure the setting.



ABS Robo Wrist® Gold Finger (Right hand only)

Materials: Super light weight, Heavy duty, Stainless steel.

Features: Finger and wrist support.

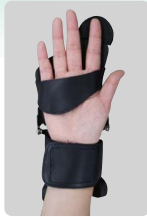
Small 100×250×50mm 312g
Regular 100×290×50mm 337g
Large 100×290×50mm 347g



Black/Silver



Wine Red



OPTION



ABS Replacement Palm belt for Gold Finger (Right hand only)

Size: Small : 22cm, Regular : 23cm, Large : 25cm

ABS Replacement Palm belt Easy use velcro

Size: Small : 28cm, Regular : 30cm, Large : 33 cm (Right hand only)

ABS Replacement Wrist belt Easy use velcro

Size: Small : 30cm, Regular : 32cm, Large : 35cm

FLAT!

The flat top allows for more finger movement.

SHORT!

New compact body allows for more release options.

ONE SIDE!

Single sided wing provides added flexibility.



Gun Metallic



Pearl White



Pearl Pink

ABS Robo Wrist® Short Model

(Japan PAT. 3259841)

Materials: Super light weight, Heavy duty, Reinforced duralumin.

Features: Compact and wrist support.

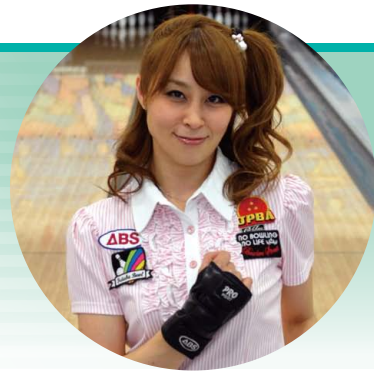


Specs	Hand	Stainless	Wine Red	Black/Silver	Pink	Gun Metallic	Pearl White
Small 100×250×50mm 235g Stainless 275g	R	●	●	●	×	×	×
	L	●	●	●	×	×	×
Regular 100×290×50mm 265g Stainless 300g	R	●	●	●	×	×	×
	L	●	●	●	×	×	×
Large 100×290×50mm 265g Stainless 310g	R	●	●	●	×	×	×
	L	×	×	×	×	×	×
Short Model: Small 100×250×50mm 210g	R	×	×	×	●	●	●
	L	×	×	×	×	×	×
Short Model: Regular 100×250×50mm 230g	R	×	×	×	●	●	●
	L	×	×	×	×	×	×
Gold Finger: Small/Regular/Large	R	●	×	×	×	×	×
	L	×	×	×	×	×	×



Blackberry

Raspberry



Pro Bowler
Urara Himeji's Favorite



ABS Pro Wrist

Sizes : XS, S, M, L, XL (R/L)

Materials : Soft PU, Aluminum Plate

Features : Compact wrist support.



Blue/Black

Black/ Black

Red/ Black

Purple/ Black



ABS Finger Support

Sizes : Sizes S, M, L (R/L)

Materials : Polyester Knit Mesh, Aluminum Plate

Features : Finger and wrist support.



Red/ Black

Black/ Black

Blue/Black

Purple/ Black



ABS Multi Wrist

Sizes : S, M, L (R/L)

Materials : Polyester Knit Mesh, Aluminum Plate

Features : Finger and wrist support with special silicon rubber.



Purple/ Black

Black/ Black

Blue/Black

Red/ Black



ABS Ultra Wrist

Sizes : S, M, L (R/L)

Materials : Polyester Knit Mesh, Aluminum Plate

Features : Finger and wrist support.



Black/ Black



Blue/Black



Red/ Black



Purple/ Black



Orange



ABS Super Wrist

Sizes : S, M, L (R/L)

Materials : Polyester Knit Mesh, Aluminum Plate

Features : Wrist support.

ABS Mini Wrist

Sizes : S, M, L (Right Only)

Materials : Polyester Knit Mesh, Aluminum Plate

Features : Wrist support.



Black



Blue



Red



Black (R/L)



Purple



Cream

ABS Tacky Palm

Sizes : XS, S, M, L, XL (R/L)

Materials : Special Silicon Rubber

Features : For maximum grip.



Red

ABS Super Tacky Palm

Sizes : 18 (XXS), 19, 20 (XS), 21, 22 (S), 23 (M), 24, 25 (L), 26 (XL)

Right Only (Black : R/L)

Materials : Special Silicon Rubber

Features : For maximum grip.



Purple



Black



Blue



Red



White



Mongoose

Sizes : S, M, L (R/L)

Materials : Polyester, Aluminum Plate

Features : Finger and Wrist support. *Not available for U.S.A.*



Black



Blue



Wrist Master 2

Sizes : S, M, L (R/L)

Materials : PU, Aluminum Plate

Features : Wrist support.



Dr. Elbow

Sizes : SS (22-23cm) , S (24-25cm) , M (26-27cm) , L (28-30cm) , LL (31-34cm)

Features : Prevents tendonitis.



ABS Palm Supporter

U/I : 12 pcs. Sizes : one sizes fits all

Materials : 70% Polypropylene, 17% Rayon

Features : Gives a firm fit with added padding for maximum comfort. Use alone or with other ABS gloves for added support.



ABS Glove Liner

U/I : 12 pcs.

Sizes : one sizes fits all

Materials : 100% Cotton

Features : For maximum comfort and absorption of perspiration. Use alone or with other ABS gloves for added support and comfort.



TAPES



ABS Fitting Tape F-1 25

U/I : 12 pcs.
Dimensions : 25mm × 4M



ABS Fitting Tape F-1 50

U/I : 6 pcs.
Dimensions : 50mm × 4M

Features : Cotton thin tape. Protects fingers.



ABS Fitting Tape F-2 25

U/I : 12 pcs.
Dimensions : 25mm × 4M



ABS Fitting Tape F-2 35

U/I : 6 pcs.
Dimensions : 35mm × 4M



ABS Fitting Tape F-2 50

U/I : 6 pcs.
Dimensions : 50mm × 4M

Features : Sweat proof. Cotton.
Very smooth surface. Protects fingers from cuts.



ABS Fitting Tape F-3N 25

U/I : 12 pcs.
Dimensions : 25mm × 4M



ABS Fitting Tape F-3N 50

U/I : 6 pcs.
Dimensions : 50mm × 4M

Features : Rough texture gives adhesiveness to its surface and provides maximum grip.



ABS Fitting Tape F-4 25

U/I : 12 pcs.
Dimensions : 25mm × 4M



ABS Fitting Tape F-4 50

U/I : 6 pcs.
Dimensions : 50mm × 4M

Features : Strong adhesion and easy to remove from fingers.



Black

White

ABS ABS Brand Tape

U/I : 12 pcs.
Dimensions : 25mm × 4M

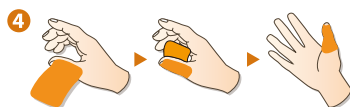
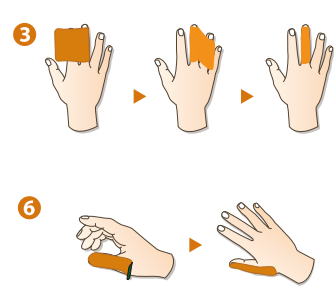
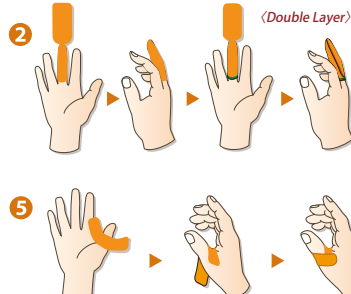
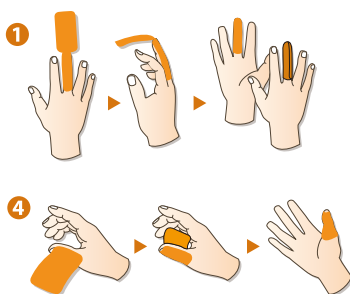


Basic Taping Methods



Taping methods for Fitting Tapes, Skin Tapes, Patch Tapes, and Grip tapes.

Round the corners to prevent from peeling off.





25mm×5M : Beige 50mm×5M : Beige

Kinesio Tape

(Breathable Elastic.)
U/I : 25mm:Box of 12 rolls.
50mm:Box of 6 rolls.
Materials : Elastic, Adhesive Cotton



Hilate Tape

U/I : 25mm:12 rolls ea. 50mm:6 rolls ea.
Materials : Elastic,Adhesive Gauze
Features : Prevents blisters,sores,and cuts.



White 25mm×5M
50mm×5M



Non-slip Silicon Tape

U/I : 24 packs (5 pcs ea.)
Features : Elastic,Silicone,Adhesive cotton

Set Position A



Stik Tape

U/I : Display box of 24 rolls ea.
Features : For adjusting finger hole size.

Set Position A·B



Thumb Insert IT-1

U/I : Box of 12 pkgs (12 pcs ea.)
Dimensions : 19×50 mm
Materials : Teflon
Features : Adjusts for a smoother,faster, and cleaner release.

Set Position B



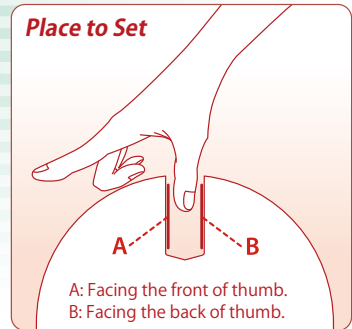
1 inch 3/4 inch 1/2 inch

High Quality Insert Tape

U/I : 12 packs (30 pcs ea.)
Sizes : 1",1/2",3/4"
Features : Adjusts thumb hole.

NEW

Set Position A



Thumb Cushion

U/I : 24 packs (2 pcs ea.)
Sizes : 1 size
Features : For maximum grip.

Set Position B



Insert Tape (by USA Master)

U/I : 24 packs
Sizes : 1",1/2",3/4"
Features : Adjusts thumb hole.

Set Position A



Insert Tape Super Textured (by USA Master)

U/I : 12 packs
Sizes : 3/4"
Features : Adjusts thumb hole.

Set Position A



Turbo Shur Hook Cork Tape

U/I : 40 packs
Features : For better hook control and release.

Set Position A



Turbo Shur Out Tape Strips

U/I : 40 packs
Features : For quick clean release.

Set Position B



Turbo Shur Cushions (1/8)

U/I : 20 packs
Features : For the perfect fit.

Set Position B



Turbo Shur Cushions (1/4)

U/I : 20 packs
Features : For the perfect fit.

Set Position B

Abralon

Made in Finland

Abralon is superior sanding and polishing product for bowling ball surface applications. Used to achieve extremely fine polished surfaces with minimal effort.

Abralon has the following features: Combines benefits of abrasive cloth and non-woven products. Constructed with a fabric face, foam center and hook & loop backing. Openings in fabric allow water and air to flow freely around the abrasive.

Works especially well when sanding contoured surfaces and sharp edges. Open cell design holds large amount of water for lubrication and cooling. Foam center provides for even surface pressure, eliminates "finger marks" when hand sanding.



Available in 180, 360, 500, 600, 1000, 2000 and 4000 grit.



ABS Hand Conditioner

U/I : Box of 12 ea.
Features : Keep hands dry providing continuous control.



ABS Rosin Bag

U/I : Box of 12 ea.
Features : Provides extra grip even on the most humid days.



Master Rosin

U/I : Box of 12 ea.
Features : Get a grip with compact rosin bags.



Puff Ball

U/I : Box of 12 ea.
Features : Keep hands dry and in control.



Skin Patch

U/I : Box of 24 ea.
Net. : 1/4 oz (7.4ml)
Features : Liquid bandage to protect fingers & nails.



Giant Skin Patch

U/I : Box of 24 ea.
Net. : 3/4 oz (22.2ml)
Features : Liquid bandage to protect fingers & nails.



ABS Ultra Bond

U/I : 6 units
Net. : 50g (approx.1.76 oz)
Features : Versatile adhesive for inserts.



ABS Shoe Slide

U/I : Display box of 20 pkgs ea.
Features : Elastic, silicone, Adhesive cotton.



ABS Approach Powder

U/I : Box of 12 ea.
Features : Increases a bowler's approach slide.



ABS Finger Grip Remover

U/I : 63/64, 7/8
Features : Removes finger inserts.



Bevel knife

U/I : 6 units
Size : S, M, L
Features : To adjust hole size.

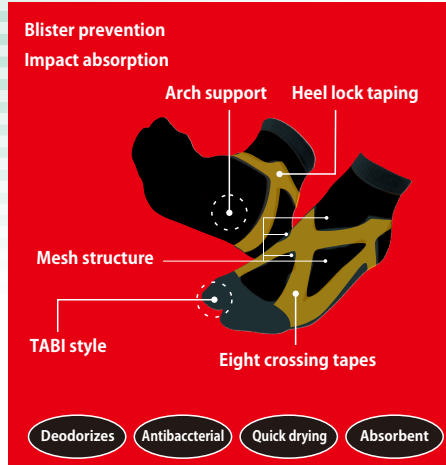


Wire Brush

U/I : Box of 6 ea.
Features : Removes dust and dirt from shoe soles.

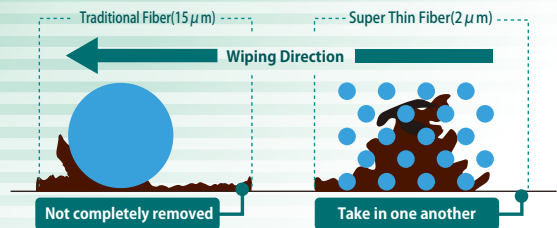
ABS BOWLING SUPPORT SOX (TABI)

U/I : 12 pairs.
 Materials : Polyester, Cotton, Nylon, polyurethane
 Size : S (23.0-25.0 cm)
 M (25.0-27.0 cm)
 L (27.0-29.0 cm)



PRO-am Microfiber Towel

U/I : 12 pcs.



Traditional fiber spreads oil and dust but cannot completely remove it. Super thin fiber gets closer to the surface and wipes up and traps the dirt and oil into the space in between the fibers (inner trap function).



ABS Socks 300

U/I : 120 pairs.
 Materials : Cotton, Polyester
 Features : Mesh top, for added ventilation



ABS Socks 200

U/I : 120 pairs.
 Materials : Cotton, Polyester
 Features : Lightweight and absorbent

NEW

ABS Kids Socks

U/I : 12 pairs.
 Materials : Cotton, Polyester



ABS Shoe Cover

U/I : 12 pairs.
 Features : Protects your shoes off the lane.
 Size : M (~24.5 cm)
 L (25.0cm~27.5 cm)
 LL (28.0 cm~)



ABSOLUTE
CLEANER



ABSolute Cleaner

ABSolute Cleaner removes lane oil and dirt from the ball's surface.

U/I : 12 units

ABSOLUTE
REMOVER



ABSolute Remover

ABSolute Remover revives the bowling ball to its original condition by removing oil that has soaked into the coverstock and dirt / grime from the ball's surface.

U/I : 12 units

ABSOLUTE
CLEANER
mousse type



ABSolute Remover mousse type

ABSolute Cleaner removes lane oil and dirt from the ball's surface.

U/I : 12 units

ABSOLUTE
BALL WIPER



- Pre moistened with detergent for powerful cleaning on contact.
- Durably made and torn resistant.
- Unscented deodorization.
- East to carry in compact pouch.
- Environmentally friendly and soft on hands.
- Nonflammable.

ABSolute Ball Wiper

U/I : 1case / 24 units

ABSOLUTE
QUICK WIPER



NEW

ABSolute Quick Wiper

U/I : 1case / 10 units



ABS Bowl Clean

U/I : 12 units
Features : Removes stubborn dirt preventing deterioration.



KEGEL Revive

U/I : 12 units
Features : Cleans and maintains ball surface. Limits oil absorption and reduces dirt buildup. Increasing performance and longevity.

Oil Removal Cleaner

ION POWER S

ION POWER S effectively removes oil and dirt from the surface of bowling balls on contact. This water soluble cleaner contains strong working alkaline ion water for powerful oil and dirt absorption that helps revives ball performance.

Ion power S Spray

U/I : 1case / 24 bottles (100ml)
1case / 12 bottles (200ml)

Ion power S Foam

U/I : 1case / 12 bottles

Ion power S Refill

U/I : 1case / 12 bottles



Spray (100ml)



Spray (200ml)



Foam (200ml)



Refill (500ml)

ABS Hydraulic Drilling Machine

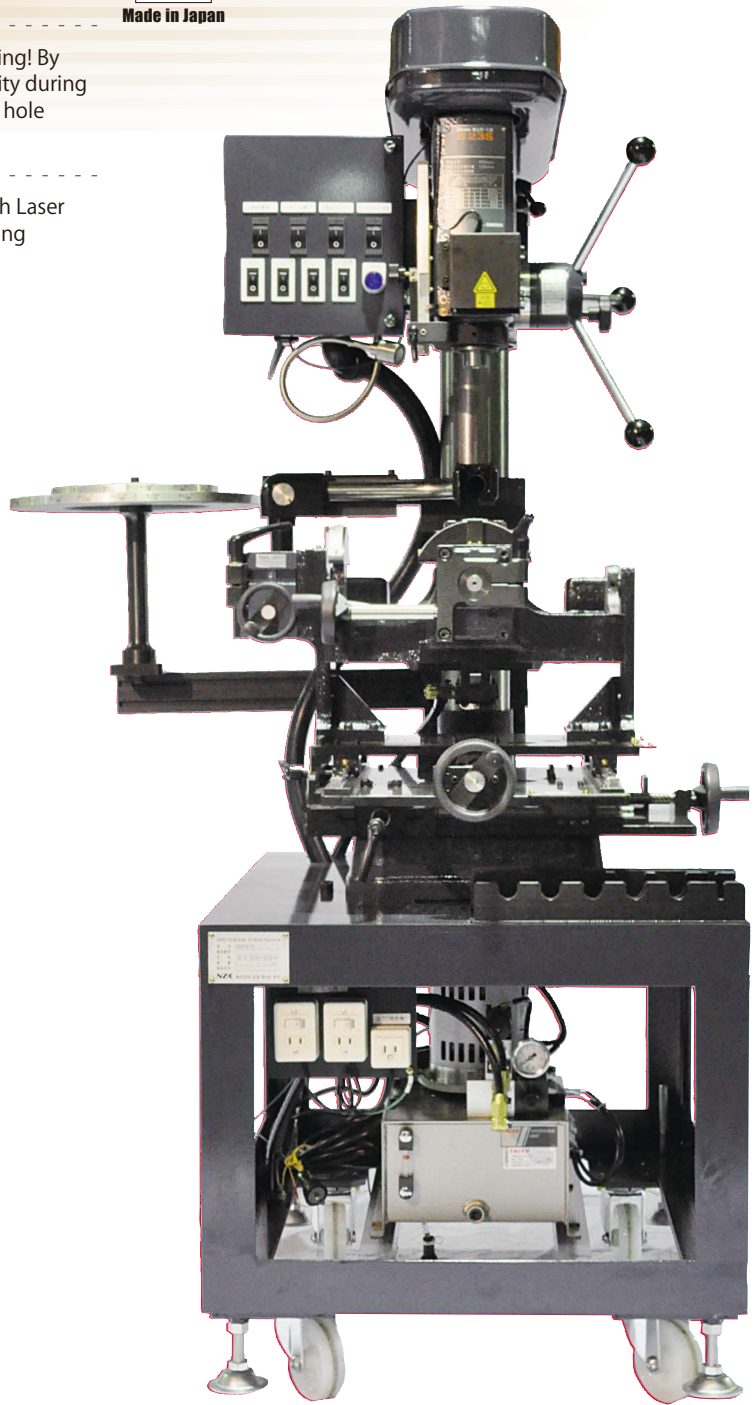
High Quality Researched, Developed, Manufactured and Constructed in Japan.



Made in Japan

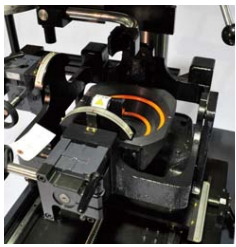
World's First Increased grip capability with Hydraulic clamping! By holding the ball in a fixed position, the instability during drilling through different mass, and for double hole drilling is dramatically improved.

Increased Control Zero control can be adjusted easily with Laser Assist and minor adjustments to a drilling position (i.e. Grip Center).

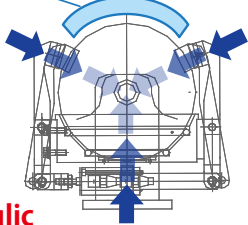


Machine Characteristics

ABS Hydraulic Clamping System



Keeps the drill area free, with a tight hold



World's first hydraulic clamping system for bowling balls.



Instable ball clamps cause inaccurate drilling.

Unstable ball while drilling can result in a larger hole and a rough drill surface.

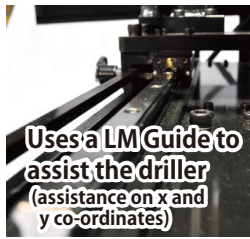


Hydraulic Clamping System

A smooth drilling, with a clean drill surface.



Laser Light Assist.



Uses a LM Guide to assist the driller (assistance on x and y co-ordinates)

ABS Hydraulic Drilling Machine

- Quantity : 1 machine
- Size : H1751 × W650 × D850 (excluding drill-bit tray)
- Weight : 380kg
- Power Supply : AC100V
- Energy Consumption : 50Hz 30A, 60Hz 29A (Including 14A Vacuum)
- Accessories : Series of Drill Bits (Made in Japan) Drill Bit Removal Tool Center Removal Tool Instruction Manual Vacuum

Additional Options



ABS Drill Bits (Made in Japan)

- Quantity : 1 Bit
- Sizes : 1 1/4", 1 1/8", 63/64", 31/32", 7/8"



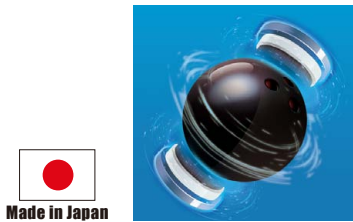
Digital Scale System

Digitally display for forward/reverse, and left/right pitches and drill depth can be added.
 Enabling for more precision in your drilling.
 Scales can be set in inches, millimeters or fractions.
 Fractions can be set displayed in 1/16, 1/32 and 1/64.
 Parallel XY pitch and Z Pitch sensor + Magnetic Tape.
 Please Note: This system can only be applied after calibration of the machine. It cannot be applied before shipment.



Ball Clinic Bowling Ball Maintenance.

Our ball resurfacing machine, BALL CLINIC, will sand and polish balls to almost any surface the user wishes. A quick process which also removes the risk of uneven sanding. The embedded Ball Refresh full course, will remove ball track and scratches. The removal of scratches will depend on their depth.

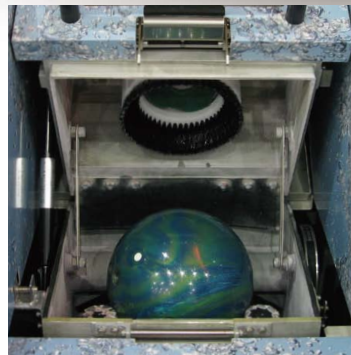
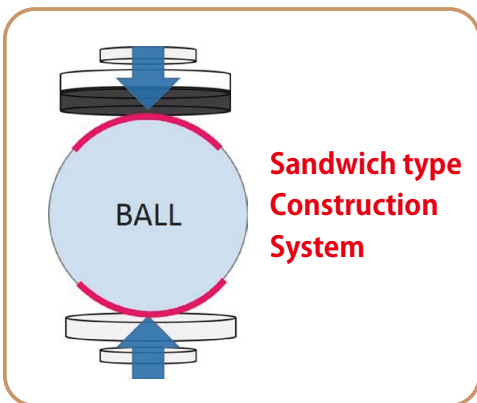


Ball Maintenance with the ease of a Vending Machine

- Fully compatible with house balls.
- Cleans the surface of dulled balls.
- Attractive and appealing to bowlers.

ABS Ball Clinic

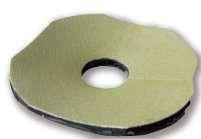
Quantity : 1 Machine
 Size : H1350×W800×D720 mm
 Weight : 210 kg
 Power : Supply AC100V
 Current : Max. 13A (Ave. 8A)
 Accessories : Clean Brush, Green Mesh, Fine Mesh, Yellow Diamond Sheet, Grip Roller



Ball Clinic Accessories



Clean Brush
 U/I : 1 Brush



Yellow Diamond Sheet
 U/I : 1 Pad



Green Mesh Pad
 U/I : 1 Set of 5 Pads



Fine Mesh Strips
 U/I : 1 Set of 15



Grip Rollers
 U/I : 1 Set of 4 Rollers



3M Finishing Compound
 U/I : 1 gallon

ION POWER OIL REMOVER

Revive your ball!

ION POWER OIL REMOVER

Quantity : 1 Machine
 Size : H350×W480×D350 mm
 Weight : 4.0kg
 Power : Supply AC100V 1A



Options

ION POWER 1500

U/I : 1 Box (20L)



NEW

ION POWER 2000



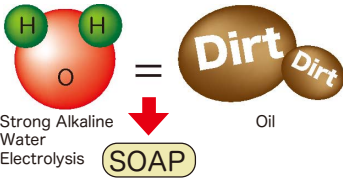
U/I : 1 Box (20L)



U/I : 1 Bottle (4L)

Cleaning Effect of strong alkaline ion water

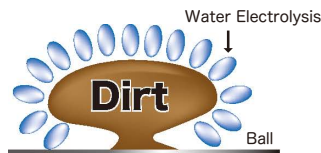
Soap Effect



Alkaline ion water contains properties which help dissolve dirt, creating a detergent like effect on stubborn oil and debris.

Absorption and Osmotic Swelling Effects

The Strong alkaline ion water efficiently absorbs and pulls dirt and oil to the surface of the bowling ball.



Separation Effects

The negative ion in the alkaline ion water absorbs the positive ions in the oil and dirt; and separates the debris from the surface of the bowling ball.



Emulsion and Dispersion Effects

The strong alkaline ion water disperses and emulsifies the oil and dirt, for efficient cleaning.



ABS Plug Cutter Light & Easy to use

POWER

- Quiet and powerful 4.4 AMP motor for improved performance. No load speed of 26,000 RPM for ultra-smooth cutting.
- Electronic speed control maintains constant speed under load.



COMFORT

- Simple and efficient base lock system securely fastens the base and increases productivity.
- Thumb roller for fine cutting depth adjustment.
- Ergonomic, slim (2-3/8") body style for comfort and control.
- Soft start feature for smooth start-ups.

ACCURATE

- Built-in shock-proof, high output, white L.E.D. light illuminates cutting edge and increases visibility with a bulb that never needs replacing throughout the life of the tool.

DURABILITY

- Tough Polycarbonate clear cover for long lasting protection.



Quick Release Clamp



Vacuum Hose Adaptor



Convenient Power Switch



LED Lights



Ball Spinner

U/I : 1 unit

Features : High-performance and low-cost polishing machine.

Motor : 0.2HP, 100V 50/60Hz

•Available by order



Ball Spinner Box

U/I : 1 unit

Features : Very stable structure for easy operation.

Caster also available.

•Available by order



Measuring Ball (by USA Jayhawk)

U/I : 1 unit

Features : Scales the span, hole sizes, and pitch.

•Available by order



The Determinator (by USA Jayhawk)

U/I : 1 unit

Features : Detect the Mass Bias and spin time.



Holtzman Ball Balance Scale (by USA Jayhawk)

U/I : 1 unit



Hand Grinder (by USA Master)

U/I : 1 unit

Features : Use with sanding discs for sanding holes.

Includes : 50(#120)sanding discs.

Sanding Discs(#120)

U/I : 100pcs.

Features : Use with Master Hand grinder.



Hand Grinder (by USA Dumore)

U/I : 1 unit

Features : Use with grinding stones.

Grinding stones are not included.

•Available by order



HD, HR Custom Color Kit

U/I : Set of 12 (3/4 oz per bottle)
Features : Full Line-up of colors.



ABS Plug Color

U/I : 1 bottle (2 oz per bottle)
Features : Great deal at a reasonable price.



HR Plug Kit

U/I : 1 set (1/2 gal. per bottle)
Features : Set of 1 bottle of hardener and 3 of compound.

Also sold separately in single bottles.



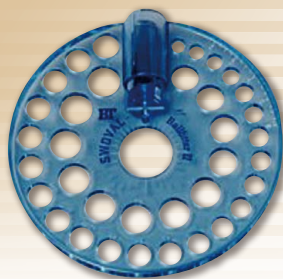
HD, HR Pump Kit

U/I : 1 set (2 pumps)



Ball Fitter Original

U/I : 1 gauge
Features : Accurately measures the hole sizes, span, the side pitch of thumb hole.



Ball Fitter Swoval

U/I : 1 gauge
Features : Easy to accurately measure the hole sizes, span, the side pitch of thumb hole.
• Available by order



POWER HOUSE Ultra Safe Dams

U/I : Circle: 150 pcs.,
 Oval: 100 pcs.
Features : Avoids messy clay while plugging.



Pitch Gauge

U/I : 2 gauges (blue & red)
Features : Measures the pitch after drilling.



Jayhawk Axis Reversing Tool

U/I : 1 gauge
Features :

- Find a centerline from a bowler's axis point in one easy step!
- Eliminates the need to use a quarter-scale for layouts.
- Create layouts faster, more accurately, and fewer lines.



Turbo Pro Sect

U/I : 1 gauge
Features :

- Indicates degree of angle for thumb.
- Easy to read ruler spans, full diameter of the ball.
- Assures accurate ball layouts.



Span Gauge

U/I : 1 gauge
Features : Measures the span in inches.



ABS T Gauge

U/I : 1 gauge



ABS Hexagonal Ball Base

U/I : 10pcs.
Materials : Plastic



Yellow Marking Pencils

U/I : 1 dz. (12 pct.)
Uses : Ball Marking.



Shoe Refresh

U/I : 24 cans
Features : Anti-bacterial shoe deodorizer.



Made in Japan



Duramax Magnaglide Approach Conditioner

U/I : 6 bottles(32oz/946ml per bottle)
Features :
Reduces friction on the approach
and improve shoe slide. Conveniently
packaged in 32oz spray bottles so
no refilling is necessary



Approach Power

U/I : 6 bottles
(1 liter per bottle)
Features : Increases a bowler's
approach slide.



Made in Japan



Ball Cleaner

U/I : 6 bottles
(1 liter per bottle)
Features : All purpose ball
cleaner.



Made in Japan



ABS Bowl Clean

U/I : 6 bottles
(1 liter per bottle)
Features : Removes stubborn
dirt preventing
deterioration.



Made in Japan



Diamond Compound

U/I : 1 bottle
(32oz/946ml per bottle)



POWER HOUSE Power Wash

U/I : 1 bottle
(32oz/946ml per bottle)



POWER HOUSE Factory Polish

U/I : 1 bottle
(32oz/946ml per bottle)



POWER HOUSE Extender Polish

U/I : 1 bottle
(32oz/946ml per bottle)



GRIP LOC



Inner Sleeves



Color	Blue	Gray	Black	Plum	Lime	Fluorescent Blue	Fluorescent Pink	Fluorescent Green	Fluorescent Orange	Fluorescent Yellow
Size	3/4	49/64	25/32	51/64	13/16	53/64	27/32	55/64	7/8	57/64
Color	Fluorescent Red	Fluorescent Purple	Teal	Yellow	Cranberry	Green	Midnight Blue	Red	Orange	White
Size	29/32	59/64	15/16	61/64	31/32	63/64	1.00	1-1/64	1-1/32	Solid



Outer Sleeves

Removal Tool

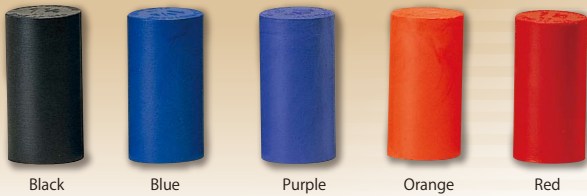
Depth Gage

Large Outer Sleeves

Drill Stop Ring

Tite Grip Glue

Solid



Black Blue Purple Orange Red

Half & Half

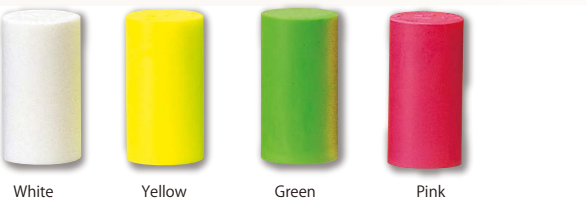


Red/Green Blue/Purple White/Black



Thumb Plug

U/I : 10pcs.
 Sizes : 1 1/8, 1 1/4" (no holes)
 1 3/8" (Solid White, Black)



White Yellow Green Pink



White/Pink Yellow/Orange



Black Blue Purple Orange Pink White Clear Yellow Green Red

ABS Thumb Plug

U/I : 10pcs.
 Sizes : 1 1/8, 1 1/4" (no holes)





White Tip
U/I : 10pcs.



Lady's Tip
U/I : 10pcs.



**Semi Cerise /
Lady's Semi Cerise**
U/I : 10pcs.

	outer dia		19/32	5/8	21/32	11/16	23/32	3/4	25/32	13/16	27/32	7/8
White Tip	1"	inner dia: each 1/32	○	○	○	○	○	○	○	○	○	○
Lady's Tip	7/8"		○	○	○	○	○	○	○	○	—	—
Semi Cerise	1"		○	○	○	○	○	○	○	○	○	○
Lady's Semi Cerise	7/8"		○	○	○	○	○	○	○	○	—	—



Minute Grip
U/I : 10pcs.



Power-SB
U/I : 10pcs.
Material : Urethane



Ice Grip
U/I : 10pcs.
Material : Urethane



Ice Grip Ladies
U/I : 10pcs.
Material : Urethane

	outer dia		17/32	35/64	9/16	37/64	19/32	39/64	5/8	41/64	21/32	43/64	11/16	45/64	23/32	47/64	3/4	49/64	25/32	51/64	13/16	53/64	27/32	55/64	7/8	29/32	
Minute Grip	1"	inner dia: each 1/64	—	—	—	—	○	○	○	○	○	○	○	○	○	○	○	○	○	○	○	○	○	○	○	○	—
POWER-SB	31/32"		—	—	—	—	○	○	○	○	○	○	○	○	○	○	○	○	○	○	○	○*	○*	—	○*	○*	
Ice Grip	31/32"		—	—	—	—	○	○	○	○	○	○	○	○	○	○	○	○	○	○	○	○*	○*	—	○*	○*	
Ice Grip Ladies's	7/8"		○	○	○	○	○	○	○	○	○	○	○	○	○	○	○	○	—	—	—	—	—	—	—	—	

※ outer dia is 1 - 1/32"



Kororin Slider

U/I : 1 track



Made in Japan



Red

Green

Orange

Blue

Yellow

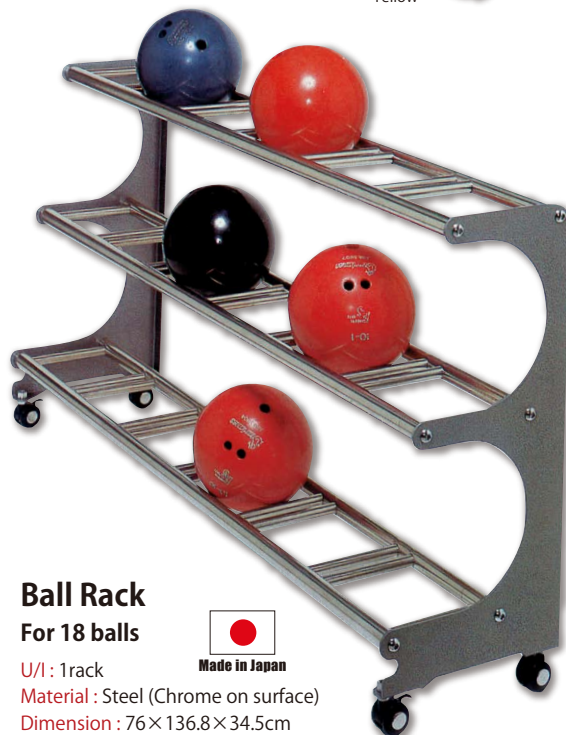


Ball Rack
For 15/18/21 balls

U/I : 1 rack
Material : Steel (Chrome on surface)
Notes : Any other specific capacity available.
Please inquire.



Made in Japan



Ball Rack
For 18 balls

U/I : 1 rack
Material : Steel (Chrome on surface)
Dimension : 76×136.8×34.5cm



Made in Japan



House Balls



5lbs (5 holes)



5lbs (5 holes)



5lbs (5 holes)



Urethane Glow House Ball

Material : Urethane
Weight : 5-16 lbs
Notes : Drilling included



Urethane Basket House Ball

Material : Urethane
Weight : 5-16 lbs
Notes : Drilling included



Urethane Soccer House Ball

Material : Urethane
Weight : 5-16 lbs
Notes : Drilling included

RS-450

Materials PU synthetic leather/PVC, PU, PU felt, Hard rubber, sponge EVA



Black / Red

Available sizes

	14	14.5	15	15.5	16	16.5	17	17.5	18	18.5	19	19.5	20	20.5	21	21.5	22	22.5	23	23.5	24	24.5	25	25.5	26	26.5	27	27.5	28	28.5	29	29.5	30	30.5	31	31.5	32		
Black / Red	○	×	○	×	○	×	○	×	○	○	○	○	○	○	○	○	○	○	○	○	○	○	○	○	○	○	○	○	○	○	○	○	○	○	○	×	○	×	○

RS-420

Materials : PU synthetic leather/PVC, PU, PU felt, Hard rubber, sponge EVA



Black



Blue

Available sizes

	16	16.5	17	17.5	18	18.5	19	19.5	20	20.5	21	21.5	22	22.5	23	23.5	24	24.5	25	25.5	26	26.5	27	27.5	28	28.5	29	29.5	30	30.5	31	31.5	32		
Black	○	×	○	×	○	○	○	○	○	○	○	○	○	○	○	○	○	○	○	○	○	○	○	○	○	○	○	○	○	○	○	×	○	×	○
Blue	○	×	○	×	○	○	○	○	○	○	○	○	○	○	○	○	○	○	○	○	○	○	○	○	○	○	○	○	○	○	○	×	×	×	×

RS-300

Materials : PU synthetic leather/PVC, PU, PU felt, Hard rubber, sponge Nylon mesh EVA



Purple



Blue

Available sizes

	16	16.5	17	17.5	18	18.5	19	19.5	20	20.5	21	21.5	22	22.5	23	23.5	24	24.5	25	25.5	26	26.5	27	27.5	28	28.5	29	29.5	30	30.5	31	31.5	32	
Purple	○	×	○	×	○	○	○	○	○	○	○	○	○	○	○	○	○	○	○	○	○	○	○	○	○	○	○	○	○	○	×	×	×	×
Blue	○	×	○	×	○	○	○	○	○	○	○	○	○	○	○	○	○	○	○	○	○	○	○	○	○	○	○	○	○	○	×	○	×	○

Custom Rental Shoes

Customized rental shoes with your company logo and original design



WINSOME



Check

lonomer plastic / Injected Pins

Uncrackable & unexpandable

Selected by ABS

Finest grade hard maple

Laminated twice as strong

Sturdy core

3 lbs 8 oz accurate

Uniform weight

High durability offers

High quality & low cost

US Patented No.5 833 547

Special base

Miniature
1/2 Scale



**Strike Master
Fired-Up Miniature**

U/I : 10pins



**Strike Master
Fired-Up**

U/I : 10pins
USBC : Permit #526



White Yellow Red

Glow pin

U/I : 10pins



Gold pin

U/I : 10pins



Winsome Fired-Up

U/I : 10pins



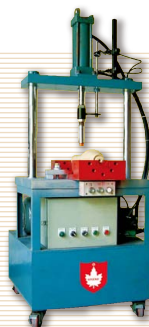
Winsome White

U/I : 10pins
USBC : Permit #502

Neck Impacting Machine

Strict quality controls are set and enforced by ABS to ensure that our customers receive only the highest quality products.

The Neck Impacting Machine tests the pins for degraded or weak wood drastically reducing and preventing broken necks.



The Neck Impacting Machine is used on the raw assembled wood cores, which are made of hard Rock Maple with only a 10% moisture rate, before the plastic coating is applied through an injection process. The test is conducted by applied "Flash Pressure" of 325 PSI(350 lb.204 kg per square cm)for.03 seconds straight down into the center portion of the neck.

Kegel Lane Maintenance Machines & Chemicals ISO 9001

ABS is the exclusive distributor for Kegel products in Japan and the largest worldwide.



KEGEL is the official USBC lane maintenance provider.



+



=

Reliance

Over 600 machines sold since the Sanction Technology series was released.
24 hour technical telephone assistance available (In Japanese).
We are working to improve machine performance and customer satisfaction.

FLEX



CONDITIONING

- DUO conditioning system. (two pumps and two conditioner cartridges)
- DUO transfer system.
- Two pre-filled/refillable conditioner cartridges that allow for separate forward and reverse oiling.
- Ability to use two conditioners in one pass.
- Adjustable microliter streams. (per load setting)
- Conditions each lane in less than 90 seconds.
- Conditioner float switches with low level warning message.
- Board-to-board pattern control.
- "Oil Only" function.
- Touchscreen control of oil pump calibration.
- Measure conditioner volume before applying to lane.

CLEANING

- Squeegee cartridge for easy replacement of blades.
- Sprayless cleaning system.
- Ability to monitor and adjust cleaner output.
- Cleaner float switches with low level warning message.
- Large waste recovery tank. (50+ lanes before emptying)
- Duster/cleaning cloth waste roll on top for easy removal.
- Patented cushion roller wrap for better cleaning.
- Super quiet DC vacuum motor.
- "Clean Only" function.
- "Dust Only" function.
- Touchscreen control of cleaner pump calibration.

DRIVE

- Patented six variable drive speeds.
- Independent adjustable cleaning speed.
- Self-adjusting drive speeds.
- LED arrow for better operator positioning.

TOUCHSCREEN/PLC

- Full color 5" touchscreen display.
- Three programs for both AM and PM.
- Stores 30 programs in memory.
- Test input/output menu option.
- Full detailed error messages with help screens.

FLEX WALKER

- Zero Turn Radius lane to lane walking function.
- Auto-aligning lane whiskers.
- Smart processor auto-align memory.
- Object detection.
- Automatic burn pair.

FLEX



BLACK



RED



BLUE



WHITE

Batteries

- Each machine comes with our new K2 EnergyR lithium battery.
- Upgrade to larger battery based on number of lanes conditioned per day.



158-1634**
40 lanes



158-1634B
62 lanes



158-1634C
90lanes

* Factory upgrade. (must be installed at time of purchase)

** All FLEX Machines Sold by ABS come standard with battery 158-1634B.



Curve



U/I : 5 gallons (4 bottles/ 1.25 gal ea.)
 Viscosity : 41.0
 Surface Tention : 22.0 dyn/cm



Infinity

U/I : 5 gallons (4 bottles/ 1.25 gal ea.)
 Viscosity : 36.5
 Surface Tention : 23.1 dyn/cm
 Features : Designed for maximum Durability.
 Best suited for High Linage Centers.



Fire

U/I : 5 gallons (4 bottles/ 1.25 gal ea.)
 Viscosity : 45.1
 Surface Tention : 23.6 dyn/cm



Prodigy

U/I : 5 gallons (4 bottles/ 1.25 gal ea.)
 Viscosity : 31.2
 Surface Tention : 23.7 dyn/cm
 Features : Virtually eliminates ball calls and out of ranges. Back-end reaction that just won't go away.



Ice

U/I : 5 gallons (4 bottles/ 1.25 gal ea.)
 Viscosity : 40.9
 Surface Tention : 23.2 dyn/cm



Crossfire

U/I : 5 gallons (4 bottles/ 1.25 gal ea.)
 Viscosity : 24.1
 Surface Tention : 23.6 dyn/cm
 Features : Specifically formulated to optimize wick/pad flow. Works very well with all other wick/pad lane machines.

	Sanction Technology etc.				Sanction / Wick / Pad	Wick / Pad
	Curve	Fire	Ice	Infinity	Prodigy	Crossfire
Viscosity (22.8°C)	41.0	45.1	40.9	36.5	31.2	24.1
Durability					14min**	10min**
					**Time required for allowing machine to absorb oil.	
High League Lineage	7	8	10	8	6	7
High Open Play Lineage	10	10	8	6	8	6
Reduced Pinsetter Calls	10	9	9	7	8	6
Cleaning	10	10	10	5	7	8
Carry Down	10	8	8	7	8	9
Lane Surfaces						
Pro Lane™	10	10	9	5	9	8
Anvilane™	8	9	10	9	7	10
AMF HPL™	9	9	10	8	7	8
AMF SPL™	8	8	10	9	7	8
Laneshield®	7	6	8	7	7	10
Guardian®	8	8	10	7	7	7
MAD Lanes®	9	9	10	9	7	9
Wood Finishes						
Water Base	8	8	10	7	5	9
100% Solids	8	8	10	7	5	9

This chart is quoted from Kegel Website.



Defense-CX4S

U/I : 1 gallons
 Features : Recommended for LOWER friction surfaces like most synthetic lanes. Provides a spotless lane and delivers stronger ball motion or extra "back-end kick".



Defense-C

U/I : 5 gallons (2 bottles/ 2.5 gal ea.)
 Features : The most powerful cleaner on the market. For use on all types of Synthetic and Wood Lanes.



Fizzion

U/I : 24 tablets/bag (5 bags/case = 120 tablets total)
 Features : Can be used in all lane machines. For use on all types of synthetic and wood lanes. Just drop the tablets into water for a perfect mix, every time



K2 Select

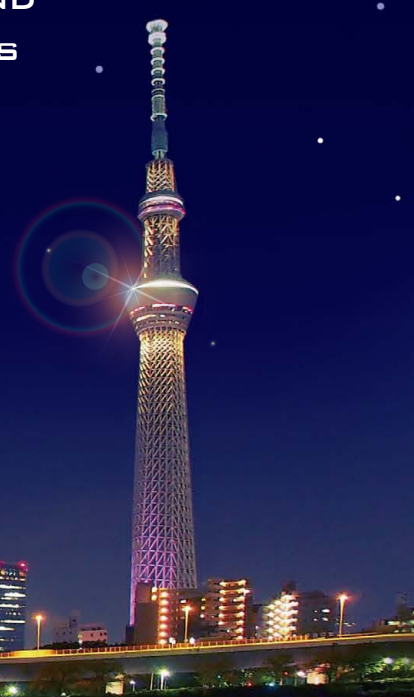
U/I : 4 rolls (43" × 60' per roll)



K2 Cloth

U/I : 4 rolls (43" × 60' per roll)
 Features : Duster cloth designed for easy installation. A roll works for approx. 450 lanes.

WE ARE THE LARGEST DISTRIBUTOR AND
MANUFACTURER OF BOWLING SUPPLIES
IN THE FAR EAST.



ABS International Corp.
is the foreign trade division of American Bowling Service, Inc., Japan.



ABS International Corp.
www.abs300.com

Head Office
1-1-1 Kitamagome, Ota-ku, Tokyo,
143-0021, Japan Fax. +81-3-5718-7122