

1999

2000

**BALL  
CATALOG**



COLUMBIA 300

BOWLS THE WORLD OVER®



# HIGH PERFORMANCE



## New! CHAOS™

We've created Chaos™! For more control, more energy, more reaction. Chaos™ features TEC™ Texture Energy Control, an amazing new coverstock. The combination of our proven SUPER-FLEX™ reactive cover with our new particle TEChnology gives the ball extra bite for today's heavy oil conditions. With increased friction, Chaos delivers a strong arcing reaction with continued hook through the pins. Destroy.



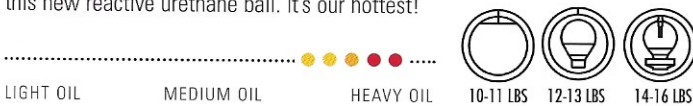
CHAOS™  
#M20-02-XX (12-16 LBS.)  
#M21-02-XX (10-11 LBS.)



POWERSURGE™  
#M38-51-XX (12-16 LBS.)  
#M39-51-XX (10-11 LBS.)

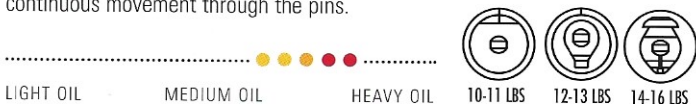
## New! POWERSURGE™

Can't get enough power? We've increased the voltage of the PowerSurge with more MICA. And we've powered up the core with more flip on the backend to conquer those hard carry-down lane conditions. You'll get a big charge out of this new reactive urethane ball. It's our hottest!



## New! SURGE™

Make your big power play. With new Traction Afflair MICA incorporated into our hot SUPER-FLEX Resin™ coverstock around an enlarged body core, the Electric Blue SURGE™ has more mid-lane revolutions, with an earlier break point and a continuous movement through the pins.



SURGE™  
#M02-10-XX (12-16 LBS.)  
#M03-10-XX (10-11 LBS.)



# TECHNICAL DATA

BALL	COLORS	COVERSTOCK	CORE	RG	DIFFERENTIAL	PIN PLACEMENT	WEIGHTS
Chaos™	Carbide Black/ Red & White logo	TEC™ coverstock incorporating reactive cover with suspended particles	14-16 lbs.: Double cylinder core; Fired undrillable Titanium Ceramic core 12-13 lbs.: Inverted bulb shape/integral core with Titanium satellite 10-11 lbs.: Round core with pancake weight block with Titanium core	2.508	0.052	Ranges between 0" and 5" from center-of-gravity	10-16
PowerSurge™	Neon Purple/ Neon Green logo	Super-Flex Resin™, Reactive Urethane by BASF® with Silver Traction Affair MICA	14-16 lbs.: Core-in-a-core technology with enlarged energy block 12-13 lbs.: Inverted bulb shape/integral core 10-11 lbs.: Round core with pancake weight block	2.524	0.045		
Surge™	Electric Blue/ Yellow logo		14-16 lbs.: Fired undrillable Titanium Ceramic core encased in a wide body core with a large flip block 12-13 lbs.: Inverted bulb shape/integral core with Titanium satellite 10-11 lbs.: Round core with pancake weight block with Titanium core	2.527			
TiBoss II™ Titanium	Grape/ Beige logo	Super-Flex Resin™, Reactive Urethane by BASF®			0.052		
TiBoss II™ Pearl Titanium	Strawberry Pearl/ Yellow logo	Pearlized Super-Flex Resin™, Reactive Urethane by BASF®	14-16 lbs.: Double cylinder core; Fired undrillable Titanium Ceramic core 12-13 lbs.: Inverted bulb shape/integral core with Titanium satellite 10-11 lbs.: Round core with pancake weight block with Titanium core	2.508			

**TiBoss II™ TITANIUM**  
#L58-51-XX (12-16)  
#L59-51-XX (10-11)



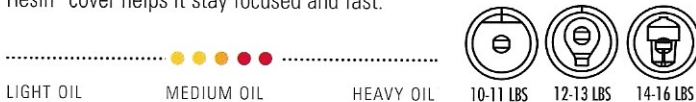
## TiBoss II™ TITANIUM

Aggressive but friendly, this ball has an ideal core/coverstock combination, with a Double Cylinder Core, an outer core radius that matches the maximum ball RG, and SUPER-FLEX Resin™ coverstock. You get a strong arcing backend and masterful control. Watch it tear through oily lanes and make a cool recovery.



## TiBoss II™ PEARL TITANIUM

With the same powerful Double Cylinder Core as its solid counterpart, a deadly competitor is beneath this shiny face. When the lanes break down, move deeper inside with the same power. The super aggressive pearlized SUPER-FLEX Resin™ cover helps it stay focused and fast.



**TiBoss II™ PEARL TITANIUM**  
#L83-48-XX (12-16)  
#L84-48-XX (10-11)



# TITANIUM

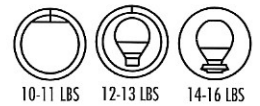
# MID-RANGE PERFORMANCE



**MESSENGER™**  
#M26-15-XX (12-16 LBS.)  
#M27-15-XX (10-11 LBS.)

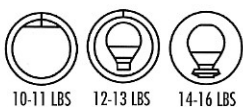
## New! MESSENGER™

Here comes the bearer of good news on how to beat the oil. We've designed this ball expressly for oily conditions. The aggressive SUPER-FLEX™ coverstock generates a quick turn at break point. The Messenger™ also delivers a lot of hook for a little dough. More good news.



## New! MESSENGER™ PEARL

You'll welcome the new pearlized companion to the Messenger™. It handles dry lanes with ease. The same SUPER-FLEX Resin coverstock envelops the all-purpose core for all-weather performance.



**MESSENGER™ PEARL**  
#M47-67-XX (12-16 LBS.)  
#M48-67-XX (10-11 LBS.)

## TECHNICAL DATA

BALL	COLORS	COVERSTOCK	CORE	RG	DIFFERENTIAL	PIN PLACEMENT	WEIGHTS
Messenger™	Electric Green/ Yellow logo	Super-Flex Resin™, Reactive Urethane by BASF®	14-16 lbs.: Flip block with inverted bulb shaped core 12-13 lbs.: Inverted bulb shape/integral core 10-11 lbs.: Round core with pancake weight block	2.518	0.042	Ranges between 0" and 5" from center-of-gravity	10-16
Messenger™ Pearl	Pearl Flame/ White logo	Pearlized Super-Flex Resin™, Reactive Urethane by BASF®	14-16 lbs.: Single-density, light bulb shape with Titanium core 12-13 lbs.: Inverted bulb shape/integral core with Titanium satellite 10-11 lbs.: Round core with pancake weight block with Titanium core	2.528	0.041		
Super Beast™ Titanium	Reef Blue Pearl/ Neon Red logo	Flexcel™ with MICA	15-16 lbs.: Single-density, bulb shape 14 lbs.: Dual-density bulb shape 12-13 lbs.: Inverted bulb shape/integral core 10-11 lbs.: Round core with pancake weight block	2.515	0.025		
Beast™ with MICA	Purple/ Neon Red logo	Pearlized Flexcel™ with MICA	14-16 lbs.: Single-density inverted bulb shape with Titanium satellite 12-13 lbs.: Inverted bulb shape/integral core with Titanium satellite 10-11 lbs.: Titanium satellite encased in round core with pancake weight block	2.522	0.029		
Beast™ Pearl with MICA	Purple Pearl/ Neon Red logo	Non-Reactive Urethane by BASF®		2.515	0.025		
TiBeast™ Titanium	Blue/ Neon Green logo	Reactive Urethane by BASF®					
Shadow™/R	Burgundy Pearl/ Teal Pearl/ Purple Solid Polished	Pearlized, Mildly Reactive Urethane	10-16 lbs.: Round with pancake weight block			Ranges between 0" and 2" from center-of-gravity	
Pearlized Shadow™	Red or Blue Pearlized/ Neon Yellow logo	High-Friction, Non-Reactive Urethane					
Black Shadow™	Black/ Neon Green logo						

## SUPER BEAST® TITANIUM

Unleash the Beast®! It's on the loose with super-charged Titanium/Ceramic core technology. With a 20% denser core and our hot SUPER-FLEX Resin™ coverstock, it's pearlized and polished to react on dry boards. This Beast is unstoppable.



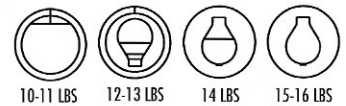
SUPER BEAST® TITANIUM  
#K78-10-XX (12-16 LBS.)  
#K79-10-XX (10-11 LBS.)

BEAST® WITH MICA  
#M33-51-XX (12-16 LBS.)  
#M34-51-XX (10-11 LBS.)



## NEW! BEAST® WITH MICA

You asked for it, so we brought it back. Better than ever. Now our popular Purple Beast® has more bite with MICA. Flexcel® coverstock surrounds the all-purpose, bulb-shaped core to give you the most consistent roll, shot after shot. When oil's a problem, the sheen finish comes into play.



BEAST® PEARL WITH MICA  
#M35-74-XX (12-16 LBS.)  
#M36-74-XX (10-11 LBS.)

## NEW! BEAST® PEARL WITH MICA

We've added MICA to this trusty performer to usher in the next generation of the Columbia tradition of performance and affordability. This highly polished beauty is ready to pounce.



## Ti/BEAST® TITANIUM

This beast is a beauty. With a Titanium satellite encased in up to 2.5 inches of high-friction, non-reactive urethane, neither dry heads nor wet-dry conditions get in its way. It's designed for medium oil, but can easily be polished for dry lane conditions.



Ti/BEAST® TITANIUM  
#L09-10-XX (12-16 LBS.)  
#L10-10-XX (10-11 LBS.)

# THE BEASTS

# SHADOWS

**NEW COLOR!**  
**SHADOW™/R PURPLE SOLID POLISHED**  
 #M25-51-XX (10-16 LBS.)



## SHADOW™/R

Have the Shadow™/R for a song. Here's a terrific teammate for any level of play. It'll give you an extended break point and leave money in your pocket. Plus, with its Flexcel®-blended reactive urethane coverstock by BASF®, the Shadow™/R is a sure-fire hit.

..... ● ● ● ● ●  
 LIGHT OIL                      MEDIUM OIL                      HEAVY OIL



**NEW COLOR!**  
**SHADOW™/R TEAL PEARL**  
 #L50-18-XX (10-16 LBS.)



**SHADOW™/R BURGUNDY PEARL**  
 #L50-51-XX (10-16 LBS.)

## PEARLIZED SHADOW™

Beginners can wow 'em with this ball. It means business with mildly reactive urethane and beats dry lane conditions with a super controllable hook. Bowling on a budget? This ball's for you.

..... ● ● ● ● ●  
 LIGHT OIL                      MEDIUM OIL                      HEAVY OIL



**PEARLIZED SHADOW™ BLUE**  
 #L48-10-XX (10-16 LBS.)



**PEARLIZED SHADOW™ RED**  
 #L48-48-XX (10-16 LBS.)

**BLACK SHADOW™**  
 #L47-02-XX (10-16 LBS.)

## BLACK SHADOW™

With all the characteristics of our famous Black U-Dot®, the Black Shadow™ is our best three-piece, non-reactive urethane performer. The sanded surface enhances the friction of this high RG ball.

..... ● ● ● ● ●  
 LIGHT OIL                      MEDIUM OIL                      HEAVY OIL



# TECHNICAL DATA

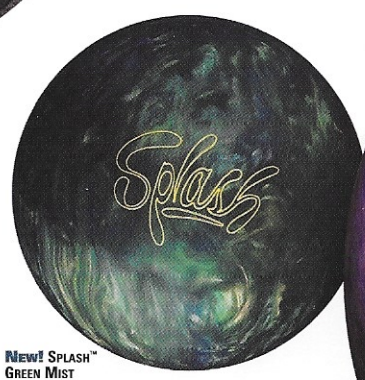
BALL	COLORS	COVERSTOCK	CORE	RG	DIFFERENTIAL	PIN PLACEMENT	WEIGHTS
Blue Dot®	Silver/ White logo	Hard Polyester					10-16
Splash®	Blue Mist/ White logo Green Mist/ Yellow logo	Medium Hard Polyester	10-16 lbs.: Round with pancake weight block			Ranges between 0" and 2" from center-of-gravity	
White Dot®	Red, Charcoal, Purple, Blue & Green Swirls/ White Logo		9-16 lbs.: Round with pancake weight block 6 and 8 lbs.: Foam urethane				6, 8, 9-16



**Blue Dot®**  
#308-42-XX (10-16 LBS.)

## BLUE DOT®

You'll definitely want a Blue Dot® in your bowling arsenal. It's recognized as the best spare ball in the world. With a high-tensile polyester cover, Blue Dot® is designed to overcome the driest lane conditions. Stays on track every shot.



**New! SPLASH™**  
**GREEN MIST**  
#M30-15-XX (10-16 LBS.)

## NEW! SPLASH™

We've added life to the party by giving our polyester line of balls a new twist. With its multi-color, glow-in-the-dark personality, The Splash™ means fun for everyone, even onlookers.



**New! SPLASH™**  
**BLUE MIST**  
#M30-10-XX (10-16 LBS.)

# TEAM COLUMBIA

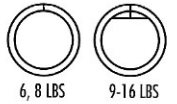
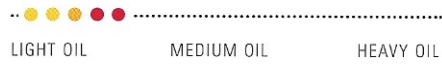
# WHITE DOTS



**White Dot®  
Red Swirl**  
#L13-48-XX  
(6, 8, 9-16 LBS.)

## WHITE DOT®

There's a reason why our exclusive White Dot® is still the world's favorite ball. Its quality and beauty have bowled over beginners and seasoned players for more than three decades. It's a winning choice for entry-level bowlers.



**White Dot®  
Green Swirl**  
#L13-15-XX  
(6, 8, 9-16 LBS.)



**White Dot®  
Purple Swirl**  
#L13-51-XX  
(6, 8, 9-16 LBS.)



**White Dot®  
Blue Swirl**  
#L13-10-XX  
(6, 8, 9-16 LBS.)



**White Dot®  
Charcoal Swirl**  
#L13-35-XX  
(6, 8, 9-16 LBS.)



**New! 300 Pro-Shirt with 1/2 Zip**

Your wardrobe is complete with this versatile, go-anywhere shirt. With 6" concealed coil zipper and double needle hem bottom with side vents. 100% cotton heather pique. In Oatmeal. Made in U.S.A.

S	#A50-35-16	XL	#A50-35-13
M	#A50-35-15	XXL	#A51-35-12
L	#A50-35-14	XXXL	#A51-35-11

**ProGrip Pro-Shirt**

You'll always look fresh and ready for action in this long-wearing shirt with the ProGrip logo. 100% fine gauge combed cotton jersey with contrasting rib knit trim. Top-stitched shoulders and vented rugby tail. In Forest/Khaki. Made in U.S.A.

S	#A74-15-16	XL	#A74-15-13
M	#A74-15-15	XXL	#A75-15-12
L	#A74-15-14	XXXL	#A75-15-11

**New! 300 Pro-Shirt Long Sleeve**

Keep warm in this knock-out pullover. Matching rib knit collar and cuffs and wood tone buttons. Rugby tail bottom. Sanded 100% ringspun combed cotton jersey. In Black. Imported.

S	#A46-02-16	XL	#A46-02-13
M	#A46-02-15	XXL	#A47-02-12
L	#A46-02-14		

**New! 300 Pro-Shirt**

You can't go wrong with the suave look of diamond houndstooth. 100% combed cotton with jacquard pattern. Rugby tail. Superior craftsmanship for long wear. In Khaki/Black. Made in U.S.A.

S	#A48-20-16	XL	#A48-20-13
M	#A48-20-15	XXL	#A49-20-12
L	#A48-20-14	XXXL	#A49-20-11



**New! Beast® Pro-Shirt**

Get that pro attitude in your neat and comfortable jersey mini-jacquard shirt with The Beast® and Columbia 300® logos. 100% combed cotton. In Burgundy/Grey/White. Made in U.S.A.

S	#A86-62-16	XL	#A86-62-13
M	#A86-62-15	XXL	#A87-62-12
L	#A86-62-14	XXXL	#A87-62-11

**Beast® Pro-Shirt**

Wear the Beast® and Columbia 300® logos proudly on the lanes or for any sport. 100% combed cotton jersey. In Oxford/Natural. Made in U.S.A.

S	#A78-35-16	XL	#A78-35-13
M	#A78-35-15	XXL	#A79-35-12
L	#A78-35-14	XXXL	#A79-35-11



**New! Surge™ Pro-Shirt**

Feel a surge of style when you wear this winner. The blue and yellow Columbia 300® and Surge™ logos and the Ti™ logo in back look terrific. 100% combed cotton jacquard. In Slate/Natural. Made in U.S.A.

S	#A82-11-16	XL	#A82-11-13
M	#A82-11-15	XXL	#A83-11-12
L	#A82-11-14	XXXL	#A83-11-11

**New! TiBoss II™ Pro-Shirt**

Be in charge in your oxford/natural shirt with Columbia 300® and TiBoss II™ embroidered logos in violet blue & gold. 100% combed cotton jersey with contrasting collar and sleeve. Made in U.S.A.

S	#A80-54-16	XL	#A80-54-13
M	#A80-54-15	XXL	#A81-54-12
L	#A80-54-14	XXXL	#A81-54-11

**New! Chaos™ Pro-Shirt**

Our new Chaos™ shirt, in cream with black trim, features embroidered Columbia 300® and Chaos™ logos plus TEC™ logo on back. 100% combed cotton jacquard. Made in U.S.A.

S	#A84-02-16	XL	#A84-02-13
M	#A84-02-15	XXL	#A85-02-12
L	#A84-02-14	XXXL	#A85-02-11



**PRO SHIRTS**

# OUTERWEAR



## TEAM COLUMBIA SPORT PULLOVER

Here's a neat pullover for any casual activity. With side entry pockets and 100% soft nylon lap crew collar, waistband and cuffs. Polyester/cotton brushed micro-poplin. In Navy. Made in U.S.A.

S	#A13-10-16	XL	#A13-10-13
M	#A13-10-15	XXL	#A14-10-12
L	#A13-10-14	XXXL	#A14-10-11

## NEW! TEAM COLUMBIA HOODED PULLOVER

You'll be a stand-out in this handsome, bright topper. Concealed, 11" antique brass zipper for quick-and-easy on and off. Large pockets have two reverse welt pocket openings. Set-in sleeves with adjustable velcro tab cuffs. Peached 100% polyester microfibre, micro coated to fend off wind and water. In Cherry. Imported.

S	#A15-48-16	XL	#A15-48-13
M	#A15-48-15	XXL	#A16-48-12
L	#A15-48-14	XXXL	#A16-48-11



## TEAM COLUMBIA SPORT JACKET

When there's a chill in the air, grab your all-seasons Team Columbia jacket. The light lining and soft knit trim are 100% nylon. Shell fabric is polyester/cotton brushed micro-poplin. In Navy or Khaki. Made in U.S.A.

Navy		Khaki	
S	#A11-10-16	S	#A11-90-16
M	#A11-10-15	M	#A11-90-15
L	#A11-10-14	L	#A11-90-14
XL	#A11-10-13	XL	#A11-90-13
XXL	#A12-10-12	XXL	#A12-90-12
XXXL	#A12-10-11	XXXL	#A12-90-11

## COLUMBIA 300® TWILL SHIRT

Mix or match this neutral toned shirt with slacks or shorts. The center pleated back yoke lets you move freely. 100% cotton peached-and-washed fine line twill with woodtone buttons. In Stone. Imported.

S	#A38-90-16	XL	#A38-90-13
M	#A38-90-15	XXL	#A39-90-12
L	#A38-90-14	XXXL	#A39-90-11 <b>NEW SIZE!</b>



## COLUMBIA 300® DENIM JACKET

The denim jacket is always a great look, especially with a natty Nu-Buck leather collar and antique brass buttons. Welt front pockets. Imported.

S	#A01-10-16	XL	#A01-10-13
M	#A01-10-15	XXL	#A02-10-12
L	#A01-10-14	XXXL	#A02-10-11

## TEAM COLUMBIA VARSITY JACKET

Give it the ol' college cheer in this jaunty Team Columbia jacket. Wool/nylon with contrasting set-in sleeves of 100% sandec cotton twill. Inside chest pocket and cozy polyfill lining. In Navy/Saddle. Imported.

M	#A09-10-15	XXL	#A10-10-12
L	#A09-10-14	XXXL	#A10-10-11
XL	#A09-10-13		



### 300 BALL 'N PINS PRO-SHIRT

Flaunt your love of the sport with our exclusive Ball 'n Pins shirt. Great-looking trim on collar and cuffs. Ultra soft 100% combed cotton interlock. In White with Navy graphics. Made in U.S.A.

S	#A44-90-16	XL	#A44-90-13
M	#A44-90-15	XXL	#A45-90-12
L	#A44-90-14	XXXL	#A45-90-11

### New! 300 PRO-SHIRT TEN-PIN

Look sharp and cool in your white knit shirt with classy trim and the Ten-Pin graphic. Vented rugby tail. 100% combed cotton. In White/Navy. Made in U.S.A.

S	#A52-90-16	XL	#A52-90-13
M	#A52-90-15	XXL	#A53-90-12
L	#A52-90-14	XXXL	#A53-90-11

### 300 DIAMONDS PRO-SHIRT

You'll want more than one of these custom-made shirts. Cool, white combed cotton with graphic accents goes with anything all year long. In White with Spruce. Made in U.S.A.

S	#A44-15-16	XL	#A44-15-13
M	#A44-15-15	XXL	#A45-15-12
L	#A44-15-14	XXXL	#A45-15-11

### New! 60/40 TEAM SHIRT

With its subtle striped contrasts, this shirt will turn heads on the lanes or on the greens. You'll appreciate the good fit and detailed workmanship. With matching chalk buttons. Polyester/cotton double piqué. Without pocket. Made in U.S.A.

	Green		Oxford
S	#A54-15-16	S	#A54-35-16
M	#A54-15-15	M	#A54-35-15
L	#A54-15-14	L	#A54-35-14
XL	#A54-15-13	XL	#A54-35-13
XXL	#A55-15-12	XXL	#A55-35-12
XXXL	#A55-15-11	XXXL	#A55-35-11

### New! 60/40 POCKET TEAM SHIRT

Enjoy the same great look and quality as the 60/40 Team Shirt and have the extra convenience of a pocket.

	Navy		Black
S	#A56-10-16	S	#A56-02-16
M	#A56-10-15	M	#A56-02-15
L	#A56-10-14	L	#A56-02-14
XL	#A56-10-13	XL	#A56-02-13
XXL	#A57-10-12	XXL	#A57-02-12
XXXL	#A57-10-11	XXXL	#A57-02-11



# TEAM SHIRTS

# TECHNICAL DATA

HIGH PERFORMANCE

MID-RANGE PERFORMANCE

POLYESTER

BALL	COLORS	COVERSTOCK	CORE	RG	DIFF.	ITEM NUMBER	WEIGHTS
 Chaos™	Carbide Black/ Red & White logo	TEC™ coverstock incorporating reactive cover with suspended particles	14-16 lbs.: Double cylinder core; Fired undrillable Titanium Ceramic core 12-13 lbs.: Inverted bulb shape/integral core with Titanium satellite 10-11 lbs: Round core with pancake weight block with Titanium core	2.508	0.052	M20-02-XX (12-16 lbs.) M21-02-XX (10-11 lbs.)	10-16
 Power Surge™	Neon Purple/ Neon Green logo	Super-Flex Resin™, Reactive Urethane by BASF® with Silver Traction Affair MICA	14-16 lbs.: Core-in-a-core technology with enlarged energy block 12-13 lbs.: Inverted bulb shape/integral core 10-11 lbs: Round core with pancake weight block	2.524	0.045	M38-51-XX (12-16 lbs.) M39-51-XX (10-11 lbs.)	
 Surge™	Electric Blue/ Yellow logo	Super-Flex Resin™, Reactive Urethane by BASF®	14-16 lbs.: Fired undrillable Titanium Ceramic core encased in a wide body core with a large flip block 12-13 lbs.: Inverted bulb shape/integral core with Titanium satellite 10-11 lbs: Round core with pancake weight block with Titanium core	2.527	0.052	M02-10-XX (12-16 lbs.) M03-10-XX (10-11 lbs.)	
 TIBoss II™ Titanium	Grape/ Beige logo	Pearlized Super-Flex Resin™, Reactive Urethane by BASF®	14-16 lbs.: Double cylinder core; Fired undrillable Titanium Ceramic core 12-13 lbs.: Inverted bulb shape/integral core with Titanium satellite 10-11 lbs: Round core with pancake weight block with Titanium core	2.508	0.052	L58-51-XX (12-16 lbs.) L59-51-XX (10-11 lbs.)	
 TIBoss II™ Pearl Titanium	Strawberry Pearl/ Yellow logo	Pearlized Super-Flex Resin™, Reactive Urethane by BASF®				L83-48-XX (12-16 lbs.) L84-48-XX (10-11 lbs.)	
 Messenger™	Electric Green/ Yellow logo	Super-Flex Resin™, Reactive Urethane by BASF®	14-16 lbs.: Flip block with inverted bulb shaped core 12-13 lbs.: Inverted bulb shape/integral core 10-11 lbs.: Round core with pancake weight block	2.518	0.042	M26-15-XX (12-16 lbs.) M27-15-XX (10-11 lbs.)	
 Messenger™ Pearl	Pearl Flame/ White logo	Pearlized Super-Flex Resin™, Reactive Urethane by BASF®		2.528	0.041	M47-67-XX (12-16 lbs.) M48-67-XX (10-11 lbs.)	
 Super Beast™ Titanium	Reef Blue Pearl/ Neon Red logo	Pearlized Super-Flex Resin™, Reactive Urethane by BASF®	14-16 lbs.: Single-density light bulb shape with Titanium core 12-13 lbs.: Inverted bulb shape/integral core with Titanium core 10-11 lbs.: Round core with pancake weight block with Titanium core	2.515	0.025	K78-10-XX (12-16 lbs.) K79-10-XX (10-11 lbs.)	
 Beast™ with MICA	Purple/ Neon Red logo	Flexcel® with MICA	15-16 lbs.: Single-density, bulb shape 14 lbs.: Dual-density bulb shape 12-13 lbs.: Inverted bulb shape/integral core 10-11 lbs.: Round core with pancake weight block	2.522	0.029	M33-51-XX (12-16 lbs.) M34-51-XX (10-11 lbs.)	
 Beast™ Pearl with MICA	Purple Pearl/ Neon Red logo	Pearlized Flexcel® with MICA				M35-74-XX (12-16 lbs.) M36-74-XX (10-11 lbs.)	
 TIBeast™ Titanium	Blue/ Neon Green logo	Non-Reactive Urethane by BASF®	14-16 lbs.: Single-density inverted bulb shape with Titanium satellite 12-13 lbs.: Inverted bulb shape/integral core with Titanium satellite 10-11 lbs.: Titanium satellite encased in round core with pancake weight block	2.515	0.025	L09-10-XX (12-16 lbs.) L10-10-XX (10-11 lbs.)	
 Shadow™/R	Burgundy Pearl/ Teal Pearl/ Purple Solid Polished	Reactive Urethane by BASF®				<i>Burgundy Pearl</i> L50-51-XX (10-16 lbs.) <i>Teal Pearl</i> L50-18-XX (10-16 lbs.) <i>Purple Solid Polished</i> M25-51-XX (10-16 lbs.)	
 Pearlized Shadow™	Red or Blue Pearlized/ Neon Yellow Logo	Pearlized, Mildly Reactive Urethane				<i>Red Pearl</i> L48-48-XX (10-16 lbs.) <i>Blue Pearl</i> L48-10-XX (10-16 lbs.)	
 Black Shadow™	Black/Neon Green Logo	High-Friction, Non-Reactive Urethane	10-16 lbs.: Round with pancake weight block			L47-02-XX (10-16 lbs.)	
 Blue Dot®	Silver/ White Logo	Hard Polyester				308-42-XX (10-16 lbs.)	
 Splash®	Blue Mist/ White logo Green Mist/ Yellow logo	Medium Hard Polyester				<i>Blue Mist</i> M30-10-XX (10-16 lbs.) <i>Green Mist</i> M30-15-XX (10-16 lbs.)	
 White Dot®	Red, Charcoal, Purple, Blue & Green Swirls/ White Logo		9-16 lbs.: Round with pancake weight block 6 and 8 lbs.: Foam urethane			<i>Red</i> L13-48-XX (6.8,9-16 lbs.) <i>Charcoal</i> L13-35-XX (6.8,9-16 lbs.) <i>Purple</i> L13-51-XX (6.8,9-16 lbs.) <i>Blue</i> L13-10-XX (6.8,9-16 lbs.) <i>Green</i> L13-15-XX (6.8,9-16 lbs.)	6, 8, 9-16



Columbia bows the world over.™

COLUMBIA 300, INC.  
5005 WEST AVE.  
SAN ANTONIO, TX 78213  
TOLL FREE 1-800-531-5920  
210-344-9211 FAX 210-349-8672  
www.columbia300.com

AUTHORIZED DISTRIBUTOR / PRO SHOP