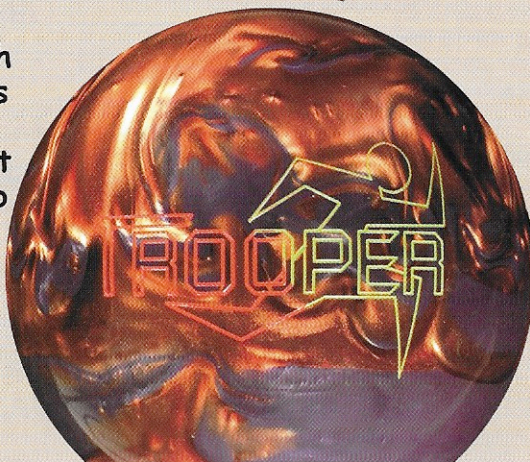
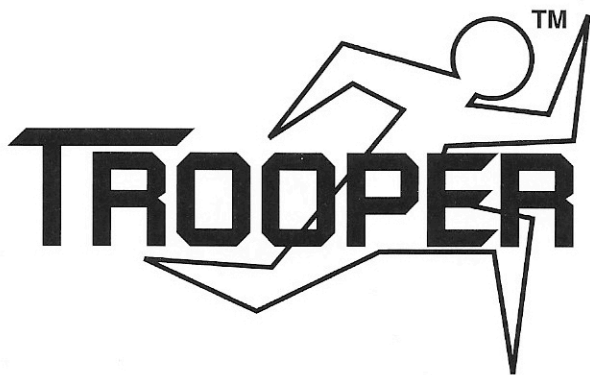


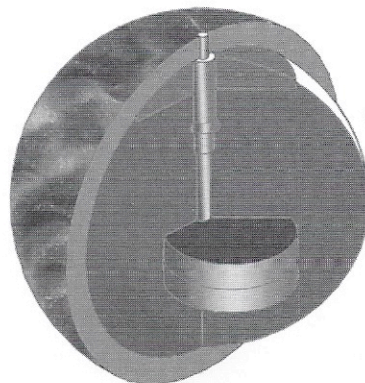
A real Trooper™!
Bowlers can trust Trooper to keep them out of trouble. Armed with an offset puck, high Rg and medium differential, this durable urethane performer comes to the rescue with expert timing. Pearlized and polished to slip through oil. Bold action colors reveal true character. A blast! In purple/gold sparkle with neon red/neon green logo. One tough Trooper.



Columbia bowls the world over®
www.columbia300.com

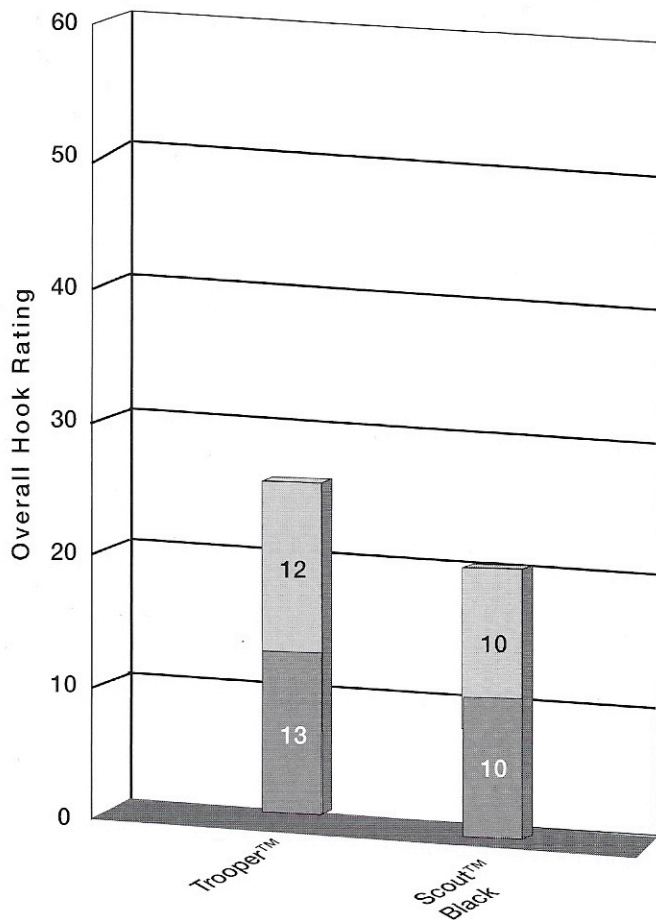


Columbia bowls the world over.®



All balls with out of the box finish

Hook Potential in Oil and on the Dry Backend



On Dry Backend
In Oil

ORDER INFORMATION:

AVAILABLE WEIGHTS: 10-16 lbs.

ITEM NUMBER: Z89-10

COLOR: Purple/Gold Sparkle with
Neon Red/Neon Green Engraving

FACTORY FINISH: Polished

FEATURES:

BENEFITS:

CORE TECHNOLOGY:	Modified 3-piece core with high density offset puck below the center (also used in Scout™ Reactive)	The offset puck creates pin out and track flare. First high Rg, medium differential urethane ball.
COVER STOCK:	Pearlized Urethane	Very durable shell for a long lasting performance, urethane generates less backend friction for reduced hook with control
HARDNESS:	75-78	

DYNAMIC PROPERTIES

Weight	Rg	Differential Rg
16lb.	2.631	0.030
15lb.	2.645	0.033
14lb.	2.666	0.033

HOOK RATING

	IN OIL	BACKEND	OVERALL
Trooper™	13	12	25
Scout™ Black	10	10	20

TRACK FLARE: 3" to 4"

For more information, visit your local pro shop.

www.columbia300.com