



**Brunswick®**

**B O W L I N G   B A L L S**

**2 0 2 0 - 2 0 2 1**

---

**NEW!**

## PRISM WARP HYBRID™

**PRO FLIP 85**

**DOT** DYNAMI**CORE**

Combining the proven Portal core with an even stronger skid-flip version of the A.C.T. cover will deliver great length, a sharp breakpoint and a ball that will handle the transition perfectly.

**Part Number** 60-106350-93X  
**Color** Black / Ice / White  
**Core** Portal  
**Coverstock** A.C.T. 2.0 Hybrid  
**Cover Type** Hybrid Reactive  
**Finish** 500, 1000 Siaair / Crown Factory Compound  
**Warranty** Two years from purchase date

	16 lbs	15 lbs	14 lbs	13 lbs	12 lbs
<b>RG</b>	2.480	2.465	2.482	2.597	2.593
<b>DIFF</b>	0.049	0.051	0.051	0.041	0.041
<b>ASY</b>	0.017	0.018	0.018	0.014	0.014



## PRISM WARP™

**PRO TRACTION 87**

**DOT** DYNAMI**CORE**

The Prism Warp has great hook potential that will be usable for a wide range of players. It uses the Portal core with an ultra-low RG and higher Differential and Intermediate Differential.

**Part Number** 60-106242-93X  
**Color** Turquoise / Purple / Black  
**Core** Portal  
**Coverstock** A.C.T. 2.0  
**Cover Type** Solid Reactive  
**Finish** 500, 2000 Siaair Micro Pad  
**Warranty** Two years from purchase date

	16 lbs	15 lbs	14 lbs	13 lbs	12 lbs
<b>RG</b>	2.480	2.465	2.482	2.597	2.593
<b>DIFF</b>	0.049	0.051	0.051	0.041	0.041
<b>ASY</b>	0.017	0.018	0.018	0.014	0.014





## PRISM SOLID™

**PRO TRACTION 90**

**DOT** DYNAMI**CORE**

The Portal core, coupled with a combination of Activator and Composite cover technologies produces a strike inducing reaction. Perfect for any heavy oil condition.

**Part Number** 60-106205-93X  
**Color** Green / Aqua / Black  
**Core** Portal  
**Coverstock** A.C.T. Solid  
**Cover Type** Solid Reactive  
**Finish** 360, 500, 2000 Siaair Micro Pad  
**Warranty** Two years from purchase date

	16 lbs	15 lbs	14 lbs	13 lbs	12 lbs
<b>RG</b>	2.480	2.465	2.482	2.597	2.593
<b>DIFF</b>	0.049	0.051	0.051	0.041	0.041
<b>ASY</b>	0.017	0.018	0.018	0.014	0.014



## PRISM HYBRID™

**PRO FLIP 84**

**DOT** DYNAMI**CORE**

The Portal core, coupled with a combination of Activator and Composite cover technologies produces a strike inducing reaction. The Prism Hybrid will handle transitions, through broken down or lower volume conditions.

**Part Number** 60-106207-93X  
**Color** Cyan / Black / Opaque White  
**Core** Portal  
**Coverstock** A.C.T. Hybrid  
**Cover Type** Hybrid Reactive  
**Finish** 500 Siaair / Crown Factory Compound  
**Warranty** Two years from purchase date

	16 lbs	15 lbs	14 lbs	13 lbs	12 lbs
<b>RG</b>	2.480	2.465	2.482	2.597	2.593
<b>DIFF</b>	0.049	0.051	0.051	0.041	0.041
<b>ASY</b>	0.017	0.018	0.018	0.014	0.014

## MELEE JAB BLOOD RED™

HIGH FLIP 81



Bowlers love the Melee Jab line for its easy length and strong sweeping backend, the Melee Jab Blood Red is an updated version of an all-time favorite and will give you that same great ball reaction.

**Part Number** 60-106328-93X  
**Color** Blood Red Pearl  
**Core** Melee  
**Coverstock** Savvy Hook 2.0 Pearl  
**Cover Type** Pearl Reactive  
**Finish** 500, 1000 Siaair  
 / Crown Factory Compound  
**Warranty** Two years from purchase date

	16 lbs	15 lbs	14 lbs	13 lbs	12 lbs
RG	2.475	2.487	2.503	2.574	2.597
DIFF	0.050	0.050	0.050	0.040	0.040

NEW!



## VAPOR ZONE HYBRID™

HIGH ALL PURPOSE 78



Combining the pearl and solid Activator Plus 2.0 covers and finished with a smooth 3000 grit Siaair for ease through the front of the lane and strong backend continuation.

**Part Number** 60-106222-93X  
**Color** Emerald / Silver / Purple  
**Core** Zone Asymmetric  
**Coverstock** Activator Plus 2.0 Hybrid  
**Cover Type** Hybrid Reactive  
**Finish** 500, 3000 Siaair Micro Pad  
**Warranty** Two years from purchase date

	16 lbs	15 lbs	14 lbs	13 lbs	12 lbs
RG	2.492	2.478	2.495	2.589	2.612
DIFF	0.046	0.046	0.046	0.043	0.043
ASY	0.017	0.017	0.017	0.011	0.011



## VINTAGE PHANTOM™

HIGH ALL PURPOSE 84



Designed for today's conditions but recreating the famous reaction. The low RG and low differential core paired with a strong cover and finish create a predictable, must-have motion.

**Part Number** 60-106201-93X  
**Color** Black / Steel Grey  
**Core** Cynosure  
**Coverstock** Savvy Hook Solid 2.0  
**Cover Type** Solid Reactive  
**Finish** 360, 1000 Siaair Micro Pad  
**Warranty** Two years from purchase date

	16 lbs	15 lbs	14 lbs	13 lbs	12 lbs
RG	2.485	2.471	2.486	2.597	2.593
DIFF	0.030	0.032	0.032	0.041	0.041





## UPPERCUT™

ADVANCED FLIP 78



We wrapped our new Savvy Hook 3.0 around the Melee Core with Dynamicores to create more mid lane than the Jab with the same strong backend motion.

**Part Number** 60-106224-93X  
**Color** Black / Gold Sparkle  
**Core** Melee  
**Coverstock** Savvy Hook 3.0  
**Cover Type** Pearl Reactive  
**Finish** 500, 1000 Siaair / Crown Factory Compound  
**Warranty** Two years from purchase date

	16 lbs	15 lbs	14 lbs	13 lbs	12 lbs
<b>RG</b>	2.475	2.487	2.503	2.574	2.597
<b>DIFF</b>	0.050	0.050	0.050	0.040	0.040



## U-MOTION™

ADVANCED CONTROL 35



The U-Motion will provide consistent and predictable ball motion on any condition and is most effective on lighter volume and shorter patterns.

**Part Number** 60-105246-93X  
**Color** Deep Dark Purple  
**Core** U-Motion  
**Coverstock** Urethane Solid  
**Cover Type** Solid Urethane  
**Finish** 500, 1000 Siaair Micro Pad  
**Warranty** Two years from purchase date

	16 lbs	15 lbs	14 lbs	13 lbs	12 lbs
<b>RG</b>	2.600	2.596	2.633	2.631	2.628
<b>DIFF</b>	0.016	0.020	0.016	0.020	0.026

# ADVANCED

**NEW!**

## IGNITER SOLID™

**ADVANCED** ALL PURPOSE **73**

The Igniter Solid uses the same core as the Jagged Edge line and an updated and stronger Relativity cover that has been a proven winner for Brunswick. Igniter Solid provides a lot of hook without breaking the bank.

**Part Number** 60-106285-93X  
**Color** Lime Green / Grey  
**Core** Brink Symmetric  
**Coverstock** Relativity Solid 3.0  
**Cover Type** Solid Reactive  
**Finish** 500, 2000 Siaair Micro Pad  
**Warranty** Two years from purchase date

	16 lbs	15 lbs	14 lbs	13 lbs	12 lbs	11 lbs	10 lbs
<b>RG</b>	2.494	2.508	2.525	2.582	2.605	2.769	2.800
<b>DIFF</b>	0.043	0.043	0.043	0.042	0.042	0.002	0.002



## IGNITER PEARL™

**ADVANCED** FLIP **69**

Using the Jagged Edge core and Relativity 3.0 Pearl, the Igniter Pearl gets down the lane easily on broken down lanes and is the perfect addition to any level of bowler's arsenal.

**Part Number** 60-106287-93X  
**Color** Teal / White Pearl  
**Core** Brink Symmetric  
**Coverstock** Relativity Pearl 3.0  
**Cover Type** Pearl Reactive  
**Finish** 500, 1000 Siaair  
 / Crown Factory Compound  
**Warranty** Two years from purchase date

	16 lbs	15 lbs	14 lbs	13 lbs	12 lbs	11 lbs	10 lbs
<b>RG</b>	2.494	2.508	2.525	2.582	2.605	2.769	2.800
<b>DIFF</b>	0.043	0.043	0.043	0.042	0.042	0.002	0.002

**NEW!**



# AFFORDABLE



**60-105813-93X**  
Red / Black / Gold Pearl



**60-105815-93X**  
Black / Blue / Silver Pearl



**60-105811-93X**  
Purple / Pink / White Pearl



**60-106037-93X**  
Cobalt / Aqua / Teal Pearl



**60-106162-93X**  
Charcoal / Silver / Violet



**60-106164-93X**  
Metallic Blue / Black

## RHINO™

**AFFORDABLE** ALL PURPOSE **30**

The Rhino delivers the perfect balance between power and control for the first-time reactive ball buyer. The Rhino provides enhanced performance and a variety of attractive color options.

<b>Core</b>	Light bulb						
<b>Coverstock</b>	R-16 Reactive						
<b>Cover Type</b>	Pearl Reactive						
<b>Finish</b>	500 Siaair / Crown Factory Compound / Crown Factory Polish						
<b>Warranty</b>	Two years from purchase date						

	16 lbs	15 lbs	14 lbs	13 lbs	12 lbs	11 lbs	10 lbs
<b>RG</b>	2.511	2.524	2.540	2.558	2.579	2.769	2.800
<b>DIFF</b>	0.030	0.030	0.030	0.030	0.030	0.002	0.002



16-12 lbs.



11-10 lbs.

# AFFORDABLE



60-106063-93X  
Blue / Silver



60-106062-93X  
Black / Gold / Silver



60-106061-93X  
Red / Purple



60-106161-93X  
Red / White / Blue



60-106064-93X  
Sky Blue / Pink / Snow



60-106163-93X  
Neon Green / Black

## TWIST™

**AFFORDABLE** CONTROL **25**

Brunswick has a new Twist on ball performance. The Twist creates easy length with a strong and controllable backend reaction on drier lane conditions. Available in six vibrant colors and weights 16 through 8 pounds. The Twist is sure to appeal to bowlers of all ages and skill levels.

**Core** Twist Low Diff  
**Coverstock** R-16  
**Cover Type** Pearl Reactive  
**Finish** 500 Siaair / Crown Factory Compound / Crown Factory Polish  
**Warranty** Two years from purchase date

	16 lbs	15 lbs	14 lbs	13 lbs	12 lbs	11 lbs	10 lbs	9 lbs	8 lbs
<b>RG</b>	2.595	2.591	2.628	2.625	2.622	2.769	2.800	2.800	2.800
<b>DIFF</b>	0.018	0.018	0.018	0.020	0.020	0.002	0.002	0.002	0.002



16-12 lbs.



11-9 lbs.



8 lbs.



# POLYESTER



**60-105354-93X**  
Caribbean Blue  
16-8, 6 lbs.



**60-105302-93X**  
Indigo Swirl  
16-8, 6 lbs.



**60-105911-93X**  
Arctic Blast  
15-8, 6 lbs.



**60-105912-93X**  
Scarlet Shadow  
15-8, 6 lbs.



**60-105746-93X**  
Deep Space  
15-8, 6 lbs.



**60-106198-93X**  
Frozen Bliss  
15-8, 6 lbs.



**60-106165-93X**  
Razzle Dazzle  
15-8, 6 lbs.



**60-106043-93X**  
Ocean Reef  
15-8, 6 lbs.

## TZONE™

### POLYESTER ACCURATE 99

Bright colors, outstanding durability, and pinpoint accuracy for all levels of bowlers.

<b>Core</b>	TZone Bullet	<b>Finish</b>	Crown Factory Polish
<b>Coverstock</b>	Polyester	<b>Warranty</b>	One year from purchase date
<b>Cover Type</b>	Polyester		



16-12 lbs.



11-9 lbs.



8, 6 lbs.

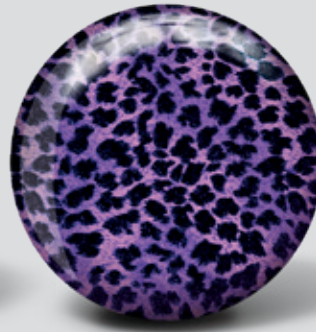
# POLYESTER



60-400620-93X  
Team Brunswick



60-400621-93X  
Stars and Stripes



60-400616-93X  
Purple Cheetah



60-400021-93X  
Leopard



60-400287-93X  
Flame



60-400587-93X  
Skull



60-400527-93X  
Snake



60-400561-93X  
Shark



60-400507-93X  
World



60-400526-93X  
Butterflies



60-400534-93X  
Hearts



60-400528-93X  
Lizard Eye



60-400575-93X  
Spiral Yellow/Blue/Black



60-400574-93X  
Spiral Red/Black



60-400245-93X  
Smiley Face



60-104221-93X  
White Ball

## VIZ-A-BALL™

**POLYESTER ACCURATE 99**

**Coverstock** Polyester  
**Cover Type** Polyester  
**Finish** Crown Factory Polish  
**Weights** 16-14, 12, 10, 8, 6 lbs.  
**Warranty** One year from purchase date



16-14, 12 lbs.



10 lbs.



8, 6 lbs.

# BALL MAINTENANCE



## CROWN FACTORY COMPOUND

**56-B60315-032** - 1 L / 32 FL OZ  
**56-B60215-006** - 177 ML / 6 FL OZ

- Helps create moderate length and continuous backend motion
- Restores tackiness in reactive resin balls
- Will work on reactive, urethane and plastic bowling balls
- Works well with or without a ball spinner
- Same compound used at the Brunswick bowling ball factory



## CROWN FACTORY POLISH

**56-B60115-032** - 1 L / 32 FL OZ  
**56-B60015-006** - 177 ML / 6 FL OZ

- Helps create great length and strong backend motion
- Restores tackiness in reactive resin balls
- Will work on reactive, urethane and plastic bowling balls
- Works well with or without a ball spinner
- Same polish used at the Brunswick bowling ball factory



## CROWN SCRUBBING GEL

**56-B60515-032** - 1 L / 32 FL OZ  
**56-B60415-006** - 177 ML / 6 FL OZ

- Provides deep clean
- Contains abrasive particles
- Restores tackiness in reactive resin bowling balls



## BIG B BOWLING BALL CLEANER

**56-B60815-032** - 1 QT / 32 FL OZ  
**56-B60715-008** - 237 ML / 8 FL OZ  
**56-B60815-128** - 3.78 L / 1 GAL

- Cleans oil and belt marks from the ball
- Works on all types of bowling balls



## CROWN FOAMING CLEANER

**56-B60615-210** - 210 ML / 7.1 FL OZ

- Cleans and rejuvenates the bowling ball's surface
- Restores the tacky feel
- Designed for all types of bowling balls
- Can be applied directly to the surface of the bowling ball



## REACTION RECHARGE

**56-B60915-032** - 946 ML / 32 FL OZ  
**56-B60915-008** - 236 ML / 8 FL OZ

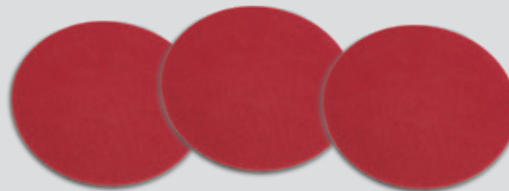
- Recharges ball by reviving the tacky feel
- Removes, oil, dirt and belt marks from surface of the ball
- Viscosity allows for deep cleaning
- Fresh citrus scented formula



## QUICK CLEAN BALL WIPES

**56-B60015-000** - 25 Wipes

- Removes dirt, oil, and residue
- 25 wipes per pack
- Plastic resealable closure



## SIAAIR MICRO FINISHING PADS (6" Pads - 3 Pack)

**60-105501-024** - 240 grit  
**60-105501-036** - 360 grit  
**60-105501-050** - 500 grit  
**60-105501-080** - 800 grit  
**60-105501-100** - 1,000 grit  
**60-105501-150** - 1,500 grit  
**60-105501-200** - 2,000 grit  
**60-105501-300** - 3,000 grit  
**60-105501-400** - 4,000 grit

- Longest lasting micro pad in the industry
- Consistent finish throughout life of pad
- Minimum clogging
- Low scratch depth
- Waterproof and washable

# PERFORMANCE INDEX

ADVANCED

ALL PURPOSE

55

## PRO

Brunswick's most advanced technology. The strongest core and cover combinations we offer.

## HIGH

Top performing balls offering great hook potential on a wide range of conditions.

## ADVANCED

Performance features with a wide range of reactions for bowlers of all skill levels.

## AFFORDABLE

Great performance with lower hook potential. Perfect for drier conditions and especially newer bowlers looking for a great value.

## POLYESTER

Great for first time ball purchasers or picking up spares.

## FLIP

Balls that skid through the front part of the lane with the strongest change of direction down lane. Balls with higher numbers will have a stronger change of direction.

## TRACTION

Balls that hook earlier on the lane providing more hook on oilier conditions or for bowlers with lower rev rates. Balls with higher numbers will have more overall hook.

## ALL PURPOSE

Versatile ball motion that is useful across various lane conditions, usually a continuous and strong arcing ball. Balls with higher numbers will have stronger overall reactions.

## CONTROL

Predictable, typically a smooth ball motion throughout the lane. Balls with higher numbers will have more overall reaction.

## ACCURATE

Low hook potential, typically a spare ball or useful on extremely dry conditions. Balls with higher numbers will be the straightest.

## REACTION SHAPE STRENGTH

The higher the number the stronger the reaction shape – with 1 being the least and 100 the most.

# LEADING TECHNOLOGY



DURABILITY  
OPTIMIZATION  
TECHNOLOGY

Brunswick's patent-pending Durability Optimization Technology (DOT) represents a revolutionary change in the way bowling balls are manufactured. Developed by Brunswick engineers with one goal in mind – to significantly reduce cracking in performance bowling balls.



Brunswick's latest innovation in outer core technology is called DynamiCore. This leap in bowling ball technology is a more durable outer material that yields less compression upon impact increasing hitting power and creating an undeniable difference in sound and pin carry. DynamiCore is blue and will be noticeable when drilling into the ball.

**Brunswick**<sup>®</sup>

525 West Laketon Avenue • Muskegon, MI 49441-2601 USA  
1-800-Yes-Bowl (Options 2,1,\*) • 1-231-725-4966 (Options 2,1,\*)  
consumerproducts@brunswickbowling.com • www.brunswickbowling.com

©2020 Brunswick Bowling Products, LLC. Brunswick is committed to continuous improvement. As a result, all specifications are subject to change. Not for reproduction without the express written consent of Brunswick Bowling Products, LLC. Item #10-095300-080 • Form #0620-07