

Brunswick '96

*The Industry's Finest Collection
Since Our '95 Catalog*



High Performance

Who rolls a perfect game without getting “*in the Zone?*” It’s part of being the best. Brunswick has distilled the heart, sweat and shot-making precision of the high performance bowler, capturing it inside these powerful spheres. Enter the Zone, with four powerful bad boys, only from Brunswick ...



A SAPPHIRE BLUE ZONE

C DANGER ZONE - BLACK ICE

A. SAPPHIRE BLUE ZONE

60-101933

10-16 lb.

Cover Stock: *PowrKoil 17 Reactive*

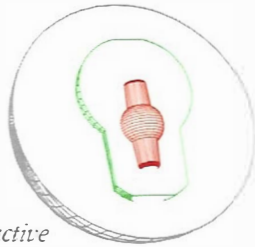
Hook Potential: 17.5/9.5

Length (1-10): 2

Backend Reaction: 10

Center Heavy/Cover Heavy: 2.5

Track Flare Potential: 9.2



Purple

B. PEARLIZED SAPPHIRE ZONE

60-102080

12-16 lb.

Cover Stock: *PowrKoil 17 Reactive*

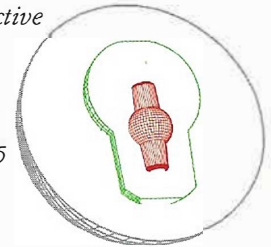
Hook Potential: 17.5/9.5

Length (1-10): 3

Backend Reaction: 10

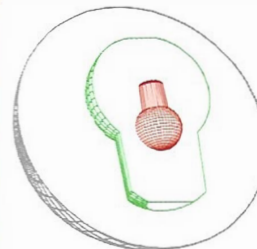
Center Heavy/Cover Heavy: 2.5

Track Flare Potential: 9.2



B PEARLIZED SAPPHIRE ZONE

D DANGER ZONE



C. DANGER ZONE -

BLACK ICE

60-102226

10-16 lb.

Cover Stock: *PowrKoil 18 Reactive*

Hook Potential: 18.5/10.5

Length (1-10): 2.5

Backend Reaction: 10+

Center Heavy/Cover Heavy: 2.5

Track Flare Potential: 9.2



D. DANGER ZONE

60-102145

10-16 lb.

Cover Stock: *PowrKoil 18 Reactive*

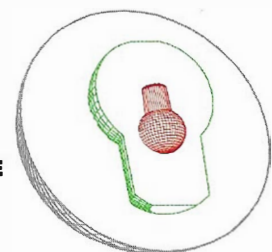
Hook Potential: 18.5/10.5

Length (1-10): 2

Backend Reaction: 10+

Center Heavy/Cover Heavy: 2.5

Track Flare Potential: 9.2



*HOOK POTENTIAL IS RATED ON A SCALE OF 1 TO 20 (1 = LOW HOOK POTENTIAL, 20 = HIGH HOOK POTENTIAL), AND DESCRIBES THE POTENTIAL A BALL HAS TO HOOK. BOWLING BALLS DO NOT HOOK BY THEMSELVES. BOWLING BALLS HOOK IN RESPONSE TO THE FORCES A BOWLER APPLIES AT RELEASE (SPEED, DIRECTION AND RATE OF ROTATION) AND LANE CONDITIONS. HOOK POTENTIAL RATINGS ARE GIVEN AS A RANGE THAT REPRESENTS THE MAXIMUM AND MINIMUM HOOK POTENTIAL OF THE BALL. NOTE: HOOK POTENTIAL RANGES ARE FOR DULL AND SHINY BALLS (DULL = 320 GRIT, SHINY = HIGH GLOSS).

Rhino's Domain

A. RHINO BLACK

60-100733
10-16 lb.

Rhino still reigns. Try the original Black or new Dusty Blue.

Cover Stock: Urethane
Hook Potential: 10/3
Length (1-10): 8.5
Backend Reaction: 5.5
Center Heavy/Cover Heavy: 7
Track Flare Potential: 4.5

B. RHINO DUSTY BLUE

60-102151
10-16 lb.

Cover Stock: Urethane
Hook Potential: 10/3
Length (1-10): 8.5
Backend Reaction: 5.5
Center Heavy/Cover Heavy: 7
Track Flare Potential: 4.5

C. RU RHINO

60-102150
10-16 lb.

RU ready? RU sure? RU delivers an untouchable, power-producing design.

Cover Stock: Reactive
Hook Potential: 12/5
Length (1-10): 7
Backend Reaction: 8.5
Center Heavy/Cover Heavy: 7
Track Flare Potential: 4.5

D. RHINO PRO BRUTE

60-102149
10-16 lb.

The Rhino Pro is still charging, and still racking up the wins. In three fearsome formulations.

Cover Stock: Urethane
Hook Potential: 11/4
Length (1-10): 8
Backend Reaction: 5.5
Center Heavy/Cover Heavy: 4.4
Track Flare Potential: 4.3

E. RHINO PRO TEAL

60-101285
10-16 lb.

Cover Stock: Reactive
Hook Potential: 14/7
Length (1-10): 3
Backend Reaction: 9
Center Heavy/Cover Heavy: 2.8
Track Flare Potential: 5.1

F. RHINO PRO PEARL

60-102148
10-16 lb.

Cover Stock: PowrKoil 17 Reactive
Hook Potential: 15.5/8.5
Length (1-10): 6
Backend Reaction: 9
Center Heavy/Cover Heavy: 2.8
Track Flare Potential: 5.1

G. RHINO PRO T2

60-102021
10-16 lb.

Hard charging. Reactive to the core. The legacy continues with the second generation of Rhino Pro power: T2.

Cover Stock: PowrKoil 17 Reactive

Hook Potential: 16/9
Length (1-10): 4
Backend Reaction: 9.5
Center Heavy/Cover Heavy: 2.8
Track Flare Potential: 5.1



PowrKoil¹⁷
COVERSTOCK

They say money is power. *Nuts.* Not when bowling's original powerhouse — Brunswick's line of Rhino[®] and Rhino Pros — are priced lower than ever before. And formulated tougher than ever before. Take your pick, and take on the pins with history's hardest chargers ...



Spare Balls

We have one word for you: "Plastics."

Actually two words: "Rhino Plastics." The number one name in bowling is now the game's number one spare ball. Or the perfect league ball. A kids' ball. It's pure Rhino, at a lower price. So choose your color and save a frame ...



Rhino Plastic

A. RHINO SAPPHIRE

60-102204

6, 8, 10, 12, 14, 15, 16 lb.

B. RHINO COBALT BLUE

60-102154

10, 12, 14, 15, 16 lb.

C. RHINO HUNTER

60-102155

10-16 lb.

D. RHINO BURGUNDY

60-101715

6, 8, 9, 10, 12, 13, 14, 15, 16 lb.

E. RHINO TURQUOISE

60-101713

10, 11, 12, 14, 15, 16 lb.

F. RHINO PLUM

60-101714

10, 11, 12, 14, 15, 16 lb.

Glow-In-The-Dark Balls

Glowing bowling? Then glow in style. Flash these bright balls under UV lighting and watch 'em light up the night. The perfect complement for America's newest bowling craze: Brunswick's Cosmic Bowling™!

G. RHINO COSMIC BOWLER — RED PLASTIC

60-102121

8, 10, 12, 14, 15, 16 lb.

H. RHINO COSMIC BOWLER — GREEN PLASTIC

60-102120

6, 8, 9, 10, 11, 12, 13 lb.

Mickey & Co. Sports Club

Pick your favorite Disney character — and have a ball bowling!

I. MINNIE MOUSE BALL

60-101858

6, 8, 9, 10, 12 lb.

J. MICKEY MOUSE BALL

60-101857

6, 8, 9, 10, 12 lb.

K. GOOFY BALL

60-101859

6, 8, 9, 10, 12 lb.

MICKEY MOUSE GLOW-IN-THE-DARK COSMIC BOWLER (Not Shown)

60-102156

6, 8, 9, 10, 12 lb.

MINNIE MOUSE GLOW-IN-THE-DARK COSMIC BOWLER (Not Shown)

60-102157

6, 8, 9, 10, 12 lb.



Sports Club



Double Plays

**A. TRANSIT —
TEAL/BLACK
59-103893**

It's all in Transit: 420 Denier nylon construction, padded, nonslip grip and strap — with a contemporary script logo.

**B. VORTEX —
ROYAL/TEAL
59-103882**

There's more value in Vortex: a 420 Denier polynylon design, large U-shaped top zipper opening, an attached shoe shelf, a detachable and adjustable shoulder strap and a variety of accessory pockets.

**C. VORTEX —
BLACK/CHARCOAL
59-103881**

**D. RHINO PRO — BLACK
59-103853**

Bag a Rhino, or two! 420 Denier nylon, two zippered end pockets, form-fitting strap — and each comes with two individual Mini-Tote bags inside.

**E. RHINO PRO — TEAL
59-103854**

Order Rhino Pro Mini-Totes separately:

**F. RHINO PRO
MINI-TOTE —
BLACK
59-103859**

**G. RHINO PRO
MINI-TOTE —
TEAL
59-103860**

**H. TORNADO —
FOREST/BLACK
59-103878**

Take Tornado for a spin, with telescopic handle and rolling system, ball and shoe compartments, multiple pockets and detachable accessory pouch made of 600 Denier nylon.

**I. TORNADO — BLACK
59-103877**



PRO BAG STRAPS
59-103701 Black
59-103803 Teal

**J. ZONE — BLACK
59-103906**

To each his Zone: 420 Denier nylon twill, adjustable nonslip straps, oversized exterior pocket with accessory

organizer, roomy end pockets, ventilated mesh pockets, spacious shoe shelf and more.

**K. ZONE — JADE
59-103905**

**L. PROFESSIONAL ROLLER
59-103876**

Stylish curves. Reinforced construction. Packed with features: removable footpads and interchangeable wheels, large front pocket, roomy, vented end pockets, protective closed-cell ball cups and more.



J Zone — Black

K Zone — Jade



D Rhino Pro — Black

E Rhino Pro Mini-Tote — Teal

F Rhino Pro Mini-Tote — Black



A Transit — Teal/Black

Twice the style. Twice the room.
Twice as tough. Brunswick's two-ball bags
are twice as good as any around.
So get one... or two...



L Professional Roller



H Tornado — Forest/Black



I Tornado — Black



E Rhino Pro — Teal



C Vortex — Black/Charcoal



B Vortex — Royal/Teal



The Single Life

One by one, Brunswick's single-ball bags line up with more features, more fashionably.

D. RHINO CART — BLACK
59-103917

The least expensive way to bag a Rhino: made from polynylon with plenty of shoe room and injection molded ball cup.

E. RHINO CAGE — ROYAL
59-103888

This compact Cage is made of 600 Denier polynylon, with U-shaped top opening, molded ball cup, plus shoe and accessory pockets.

F. RHINO CAGE — BLACK
59-103887

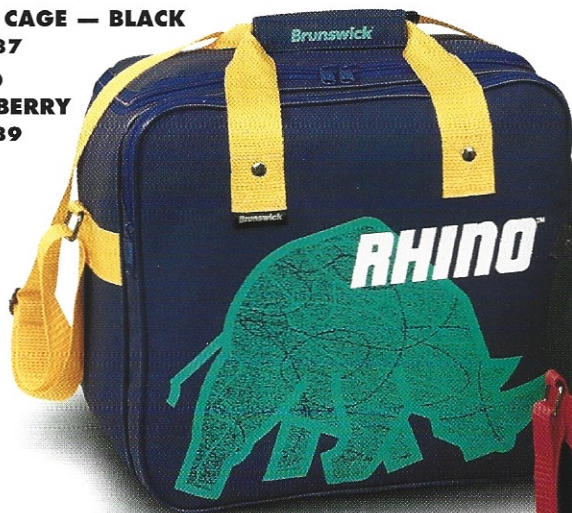
G. RHINO CAGE — BERRY
59-103889

H. RHINO SAFARI — BLACK
59-103885

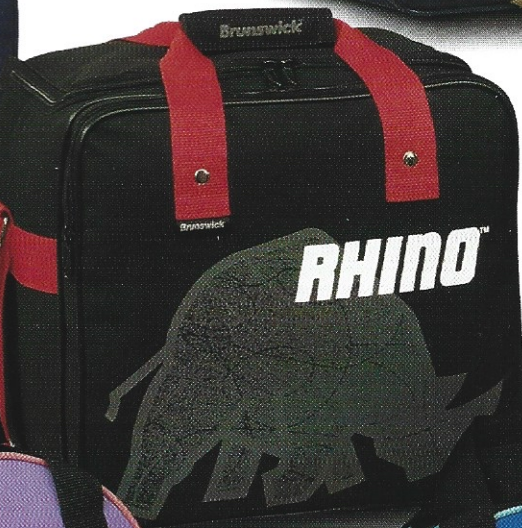
Hunt the big game: Colorful, durable, 600 Denier polynylon, separate compartments, ventilated accessory pockets and detachable strap.

I. RHINO SAFARI — TEAL
59-103886

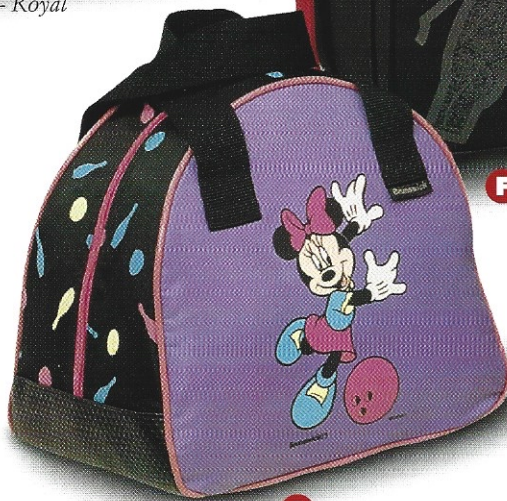
J. Foot-Lockers — Navy/Taupe



E Rhino Cage — Royal



F Rhino Cage — Black



A MINNIE MOUSE CHARACTER TOTE — LAVENDER
59-103914



B MICKEY MOUSE CHARACTER TOTE — ROYAL
59-103913

Kid Totes

A Goofy way to tote anything (a Mickey and Minnie way, too)!



Sports Club

One more reason to take Brunswick everywhere you go...



J. FOOT-LOCKERS — NAVY/TAUPE
59-103884

Put your best Foot-Locker forward: 420 Denier nylon, separate shoe compartment, easy-access U-shape opening, external, zippered pocket.

K. FOOT-LOCKERS — BLACK
59-103883



I. Rhino Safari — Teal



G. Rhino Cage — Berry



H. Rhino Safari — Black



C. GOOFY CHARACTER TOTE — TEAL
59-103903



D. Rhino Cart — Black



If you've got the heart of a champion, you need the sole of a bowler. That's why Brunswick footwear is laced with perfect features, as well as the comfort you need on the lanes. All shoes are available in sizes 7-12 and 13. Let's get bowling — *and step on it...*



**A. CRUSADER —
WHITE/NAVY
58-109462**

Cruise on in to the lanes with polyurethane uppers, lightweight, cushioned EVA midsoles, imitation suede slide pads, non-marking outsoles and more.

**B. CRUSADER —
BLACK/SILVER
58-109463**

**C. RHINO SAFARI —
WHITE/CHARCOAL
58-109460**

The name that's improved your game for years has finally gotten to the bottom of things: Rhino shoes. With Ultra-hide leather uppers, soft Nylex inner linings, imitation suede slide pads, spring heel construction, non-marking outsoles, foam collar padding with Achilles notch and, of course, the most powerful name in bowling history.

**D. RHINO SAFARI —
WHITE/DENIM BLUE
58-109461**

**E. TRADITIONAL — BONE
58-109002**

Traditional performance. Traditional value. With full-leather soles, raised arch supports and easy-care uppers.

**F. REVOLUTION —
WHITE/NAVY
58-109436**

The Revolution. Ruggedly stitched Goodyear welt construction. Reinforced back counter for firm support. 100% genuine Ultra-hide leather uppers. Nylex cushioned insoles. Inside

padded collar for exceptional fit. Plus a chrome leather sole, steel shanks and beveled anti-trip rubber heels for extra support and a smooth approach to the lane.

**G. TIGER — BLACK/WHITE
58-109435**

You've earned these stripes, as well as Ultra-hide leather and synthetic nubuck leather, thermoplastic rear heel support stabilizer, tri-support upper and forefoot flex grooves, tongue eystays, foam padding with Achilles notch, molded insole with heel cup and arch support.

Men's Shoes



**H. SHOCKER —
WHITE/NAVY/GREY
58-109425**

Get all the features in white or shocking black: Genuine Ultra-hide leather uppers (white) or synthetic nubuck leather (black), wraparound leather soles with airflow indentions, EVA molded insoles and open shanks, spring concave heels and a padded collar and tongue.

**I. SHOCKER —
BLACK/TEAL/
GREY
58-109426**



The Pinnacle Series

Brunswick's best, and the top of the line. Unparalleled integrity. Unbelievable performance. Excellent craftsmanship. Distinctive characteristics: full-grain leather uppers, soft leather lining, ultra-suede slide pads, heavy-duty welted construction, extra arch support and padding, superior ventilation system — plus Indy Goodyear rubber on the pivot foot and more.

J. MU300 (Right)
58-109445
MU300 (Left)
58-109446

K. NB300 (Right)
58-109450

L. TLM300 (Right)
58-109440
TLM300 (Left)
58-109441



Ladies, we've put all the tough, rough, pin-pounding features into your shoes, too. They even look better, and they're more comfortable. All shoes come in sizes 5-10 (unless otherwise indicated) *so strike a pose...*

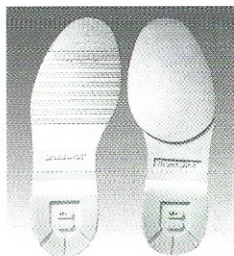


The Pinnacle Series

Our high-performance men's shoe is our highest-performing women's shoe, too. With full-grain leather uppers, soft leather lining, ultra-suede slide pads, heavy-duty welted construction, extra arch support and padding, superior ventilation system — plus Indy Goodyear rubber on the pivot foot and more.

A. WU300
(Right)
58-109456

B. TLW300
(Right)
58-109455



Kid Stuff

Kid-sized versions of our high-performance bowling shoes. Super tuff, super stylin'.

C. GIRLS' LIL' DART
58-109203
(Sorry, no longer available)

D. BOYS' SPROCK-IT
58-109202
(Sizes 1,2,3,4,5 and 6)



Don't arm.
Purple

K

J

G

F

H

E. CRUSADER —
WHITE/BERRY/SPRUCE
58-109467
(Sizes 5-9, 10)

Stop searching, it's here: polyurethane uppers, lightweight, cushioned EVA midsoles, imitation suede slide pads, non-marking outsoles and more.

F. RHINO TRAX —
WHITE/FOREST GREEN
58-109466
(Sizes 5-9, 10)

The Rhino charge continues, with synthetic leather uppers.

lightweight cushioned EVA midsoles, imitation suede slide pads, spring heel construction, non-marking outsoles and lace to toe construction.

G. RHINO SAFARI —
WHITE/FUCHSIA
58-109464
(Sizes 5-9, 10)

They're Rhinos, so you know they're good. But they're also comfy, with foam collar padding and Achilles notch, Ultra-hide leather uppers, cushioned EVA midsoles, soft Nylux inner lining and spring heel construction.

H. RHINO SAFARI —
WHITE/EVERGREEN
58-109465
(Sizes 5-9, 10)

Traditional Styles

I. TRADITIONAL —
BONE
58-109035
(Sizes 4-9, 10 and 11)

Traditional performance, with full leather soles, easy-care uppers and raised arch supports.

J. REVOLUTION —
WHITE/FOREST GREEN
58-109438

You say you want one? With Goodyear welt construction, reinforced support counter, Ultra-hide leather uppers.

K. DARE —
WHITE/PURPLE/TEAL
58-109437

Dare 'em! With cushioned EVA midsoles, foam collar padding, Achilles notch, removable foam insides, 100% genuine Ultra-hide leather and much more.

Apparel

Get into the Zone

2x1's

THE DANGER ZONE
61-860715

Sizes: S-XXXL
100% combed cotton oxford pique, contrasting neck tape, 3-button placket, full cut.



LADIES' WHITE POLO ZONE
61-860717

Sizes: S-XL
100% combed cotton interlock, subtle diamond design on collar and cuff, 2-button placket, full cut.



BLACK NAILHEAD ZONE
61-860716

Sizes: S-XXL
100% combed cotton jersey, 3-button placket, antique brass buttons, full cut.



ZONE SUPPLEX HAT
61-860623



NAVY COLOR-BLOCK ZONE
61-860632

Sizes: S-XXL
The perfect team shirt! 100% combed cotton pique, 2-button placket, wood-tone buttons, droptail, full cut.



"DEFEAT" ZONE-ISM T-SHIRT
61-860706

Sizes: S-XXL



"PERFECT SHOT" ZONE-ISM T-SHIRT
61-860691

Sizes: S-XXL
100% cotton, 100% in the Zone.

**ZONE
TWILL HAT**
61-860692



**RHINO PRO
WOOL HAT**
61-860598

*Sizes: Adjustable
Brunswick hats means
one size
fits all!*



**RHINO PRO
TWILL HAT**
61-860597



RHINO PRO T2
61-860710

*Sizes: S-XXL
100% combed cotton
pique, end-on-end
striped trim, 2-button
placket,
full cut.*



**RHINO PRO
NAVY BIRDSEYE**
61-860686

Sizes: S-XXL

**RHINO PRO
CRANBERRY
BIRDSEYE**
61-860687

*Sizes: S-XXL
Terrific team shirts in two
colors, 100% combed
cotton jacquard,
3-button placket,
metal buttons,
full cut.*



**RHINO PRO
NAVY TOWEL**
61-860610

*Soft, sturdy 100% cotton
towels featuring two of the
hottest names in bowling
history.*



**RHINO PRO
T-SHIRT**
61-860508

*Sizes: S-XXL
100% cotton,
100%
Rhinoized.*



**RHINO PRO
WHITE TOWEL**
61-860588

**DANGER
ZONE TOWEL**
61-860729



**LADIES'
RASPBERRY POLO ZONE**
61-860718

*Sizes: S-XL
100% combed cotton
interlock, 2-button placket,
wood-tone buttons, full cut.*

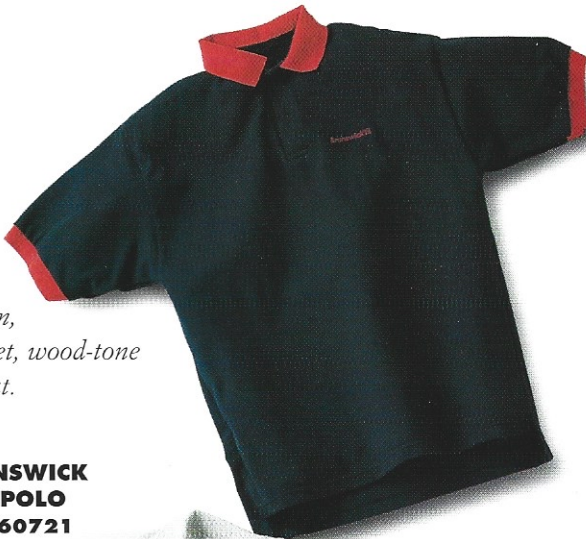
The Rhino Region

Apparel

**BRUNSWICK
NAVY POLO**
61-860720

Sizes: S-XXL

100% combed
cotton pique,
contrasting trim,
2-button placket, wood-tone
buttons, full cut.



**BRUNSWICK
ASH POLO**
61-860721

Sizes: S-XXL

100% combed cotton
jersey, matching
collar and ribbed cuffs,
dropped tail.



**BRUNSWICK
TOWEL**
61-860220

100% cotton.



**BRUNSWICK
SUPPLEX HAT**
61-860608

One size fits all.



**BRUNSWICK
NAVY POCKET
POLO**
61-860722

Sizes: S-XXL

100% combed cotton interlock, chest pocket,
wood-tone buttons, 2-button, boxed placket.



**BRUNSWICK
T O F C T O**
61-860732



WTC OATMEAL POLO
61-860726

Sizes: S-XXL

100% combed pique,
matching collar and
cuffs, 2-button plac
wood-tone buttons,
dropped tail, full cut.

Brunswick Wear

The Champions Corner

Mickey & Co. Sports Club

Tee's & towels with Mickey & Company! 100% cotton and 100% authentic.



MICKEY MOUSE T-SHIRT
61-860700

Sizes: 6/8, 10/12, 14/16, M, L, XL



MINNIE MOUSE T-SHIRT
61-860701

Sizes: 6/8, 10/12, 14/16, M, L, XL



MICKEY MOUSE TOWEL
61-860707



GOOFY T-SHIRT
61-860702

Sizes: 6/8, 10/12, 14/16, M, L, XL



GOOFY TOWEL
61-860709



MINNIE MOUSE TOWEL
61-860708



Sports Club

T O F C NAVY POLO
61-860727

Sizes: S-XXL
100% combed cotton pique, micro end-on-end stripes on collars and cuffs, 2-button placket, wood-tone buttons, dropped tail, full cut.

DANGER ZONE TV SHIRT
61-860728

Sizes: S-XXL

Get into the Danger Zone, with the same shirt the pros wear!

REICHERT CUP AZURE POLO
61-860724

Sizes: S-XXL
100% cotton pique, deep-dyed two-tone effect, 3 stone buttons, dropped tail.

REICHERT CUP TOWEL
61-860730

JOHNNY PETRAGLIA ROSIN BAG
61-860739-000

BRUNSWICK WTC TOWEL
61-860731

Accessories

Designed, packaged and developed from ideas provided by bowlers, Brunswick Professional Hand Accessories offer an exciting new approach to the accessories market.

Unique and patented formulas, innovative packaging and the most competitive pricing available are all combined here to give bowlers the products they want and your pro shop the profits you deserve.



Brunswick supplies every product bowlers want and packages them the way they need. From bottles and jars that last for weeks, to liquid packs and towelettes that are just enough for one night. Brunswick accessories combine choice, quality and value with the most unique product ideas in the world today.

CLEAR GRIP™

Antiperspirant formula, contains no sticky chemicals. Increases grip... improves control.
Liqui-Packs; 61-860637-150
1 oz. Bottles; 61-860637-018

SKIN PROTECTOR

Reduced sting formula. Softer, more flexible, lasts longer. Washes off with soap and water.
Liqui-Packs; 61-860639-150
1/4 oz. Bottles; 61-860639-018

SKIN PROTECTOR REMOVER

Convenient towelette removes all brands of skin protector/liquid bandage products.
Towelettes; 61-860641-075

DISPOS-A-BOWL TOWEL

Durable, soft, washable and reusable, offering cloth quality inexpensively.
Towels; 61-860651-060

WAX-N-BUFF TOWEL

Strong, soft and absorbent, for waxing, buffing or cleaning balls, bags or shoes.
Towels; 61-860650-060

BOWLING TAPE

1" White Textured; 30-Piece Reel;
8 Reels per Display; 61-860652-008
3/4" White Textured; 30-Piece Reel;
8 Reels per Display; 61-860653-008
1" Black Smooth; 30-Piece Reel;
8 Reels per Display; 61-860654-008
3/4" Black Smooth; 30-Piece Reel;
8 Reels per Display; 61-860655-008

SHAPE TAPE™

Unique shaped bowling tape. Ovals and shapes thumb hole to each bowler's individual grip.

1" Ivory Textured; 20-Piece Reel;
8 Reels per Display; 61-860656-008
3/4" Ivory Textured; 20-Piece Reel;
8 Reels per Display; 61-860657-008
1" Gray Smooth; 20-Piece Reel;
8 Reels per Display; 61-860658-008
3/4" Gray Smooth; 20-Piece Reel;
8 Reels per Display; 61-860659-008

PATCH PAK

New, thicker weave patches for added protection. 20 standard 1/4 inch ovals and 20 extra-large round patches per bag.
40-Patch Bags; 61-860640-100

BALL POLISH

Soft-coat, high-gloss formula contains no abrasives. Can be buffed again and again for a fresh ball track on every shot. Accepted for use during sanctioned competition.
Liqui-Packs; 61-860661-120
4 oz. Bottles; 61-860661-012

BALL CLEANER

The most powerful cleaner on the market today. Accepted for use during sanctioned competition.
Towelettes; 61-860642-050
4 oz. Bottles; 61-860642-012

BALL WAX

Superior shine and durability. Buff as you bowl to maintain consistent backend response. Accepted for use during sanctioned competition.
Liqui-Packs; 61-860649-100
2 oz. Jars; 61-860649-012

BALL CLEANING POLISH

Exceptional quality and value. Mild abrasive formula cleans and conditions reactive equipment for maximum power and performance.

Liqui-Packs; 61-860643-090
4 oz. Bottles; 61-860643-012

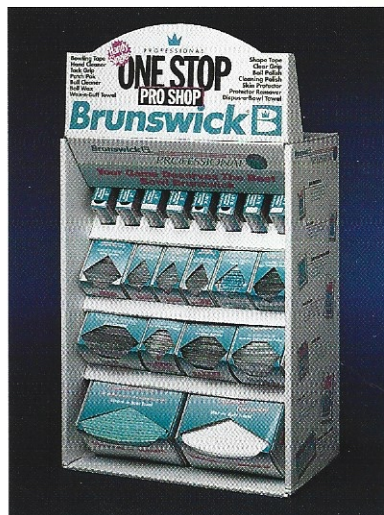
HAND CLEANER

Antiperspirant formula towelette cleans and conditions hands for improved grip and control.
Towelettes; 61-860636-065

INTRODUCING THE ONE STOP PRO SHOP.

Available at a fraction of the cost of a vending machine, this display gives any pro shop or bowling center the ability to offer a quality line of accessory products instantly. New product ideas, unique formulas and Brunswick's creative concept of single-serve packaging allows you to maximize your profits while providing added value and convenience to your customers.

One Stop Pro Shop; 61-860660-000
(includes display and singles inventory).



For more information
 call your local distributor
 or call:

PRO SHOPS / BOWLING CENTERS
1-800-937-2695

Brunswick®

BOWLING IS SOLD ON BRUNSWICK. WORLDWIDE.

Brunswick Indoor Recreation Group
 525 West Laketon Avenue • Muskegon, Michigan 49441-2697
 1-800-950-2695 • 616-725-3300 • Fax 616-725-3457