

The 1995 Brunswick Apparel Collection
Brunswick®
*Sports Its True
Colors.*



No gutters, no splits, no distractions...

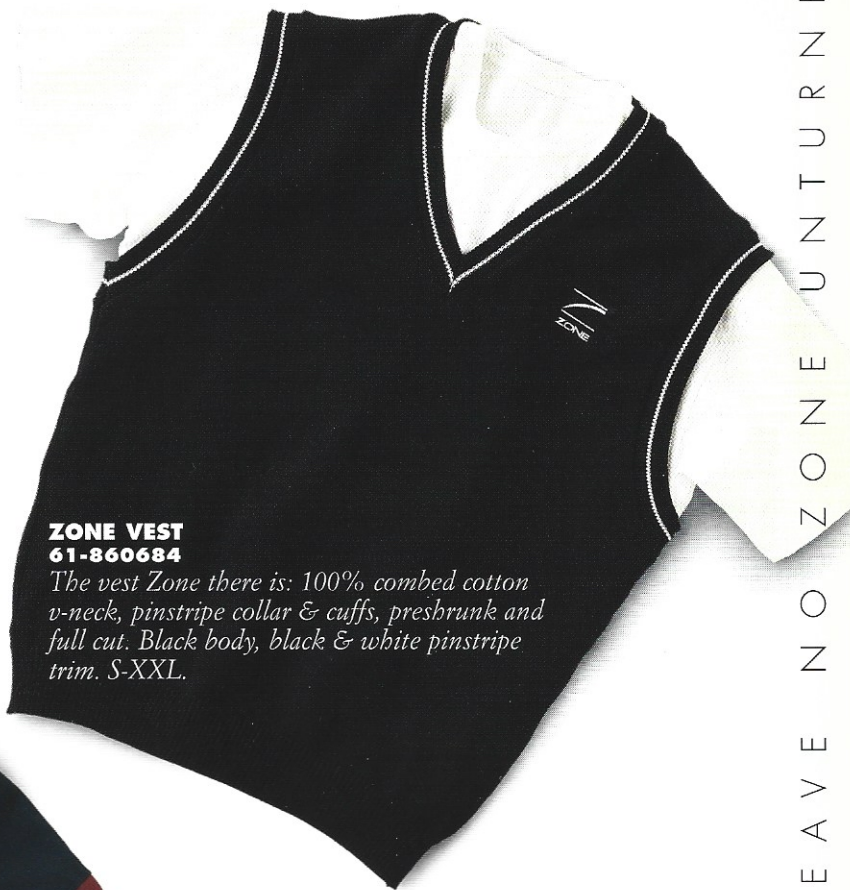
**Get in
the Zone**

Brunswick Pro Staffer Brian Voss in the Zone, with style.

NEW FOR '95

Zone™

*Brunswick helps you
"get in the Zone" with this new
line of high performance,
high fashion bowling apparel.*



**ZONE VEST
61-860684**

The vest Zone there is: 100% combed cotton v-neck, pinstripe collar & cuffs, preshrunk and full cut. Black body, black & white pinstripe trim. S-XXL.



**MULTI-BLOCK ZONE
Men 61-860632
Ladies 61-860703**

Get your entire team in the Zone, with this team shirt: 100% combed cotton pique, 2-button placket, wood-tone buttons, top-stitched shoulders and armholes, rack cuff, drop tail, full cut. Navy body, cranberry sleeves, spruce trim. S-XXL. Ladies: S-XL.*

*Team shirts are available through 1996.

Defeat is worse than death. You have to LIVE with defeat.

get in the zone.



ZONE CREW JERSEY

Natural 61-860635
Be on the Zone crew, with 100% cotton heavyweight jersey crew neck, 1x1 ribbed trim, full cut. S-XXL.

LEAVE NO PIN STANDING, LEAVE NO ZONE UNTURNED.

NEW FOR '95

**Eleven strikes down
Ten pins up
One ball to go.....**

**DIAMOND ZONE
61-860681**

A diamond in the soft, 100% combed cotton jersey jacquard, 3-button placket, stone buttons, in a full cut. Black & vanilla body, black trim. S-XXL.



**STONE ZONE
61-860699**

Stonewashed 100% cotton denim, button-down collar, chest patch pockets, yoke back, double needle construction, button sleeve placket. S-XXXL.



**COMFORT ZONE
61-860683**

Comfortable 100% combed cotton interlock, 2-button placket, wood-tone buttons, drop tail, full cut. Vanilla body, black trim. S-XXXL.

**NO GUTTERS. NO SPLITS.
NO DISTRACTIONS.**



ZONE-ISM T-SHIRT

"Defeat", 100% black cotton. S-XXL.

61-860706

"Perfect Shot", 100% white cotton. S-XXL.

61-860691



SURVIVAL OF THE FITTINGEST.



RHINO PRO HERRINGBONE
61-860682

Make waves with 100% combed cotton herringbone, 3-button placket, metal buttons, welt stripe trim and a full cut. Black & white, black w/white welt trim. S-XXL.



RHINO PRO BIRDSEYE

Terrific Rhino Pro team shirts*, in two colors: 100% combed cotton birdseye jacquard, 3-button placket, metal buttons, top-stitched shoulders and armholes, drop tail, full cut. S-XXL.

Navy 61-860686

Navy/Periwinkle body, navy trim.

Cranberry 61-860687

Cranberry/black body, black trim.

*Team shirts are available through 1996.



RHINO PRO SWEATSHIRT
61-860685

Mix it up with 85% cotton/15% polyester heavyweight fleece crew neck, 2x2 striped ribbed trim. Cream body, navy & cream striped trim. S-XXL.

Rhino Pro™

Charge into something more comfortable...



RHINO PRO DENIM
61-860616

The Pro 100% cotton stone-washed denim, button-down collar, chest patch pockets, yoke back, button sleeve placket. S-XXXL.



RHINO PRO TEE
61-860508

100% cotton. S-XXL.

FROM BRUNSWICK, NATURALLY.

Be cool in cotton, look cool with Brunswick



BRUNSWICK SUEDE

100% combed cotton
sueded jersey,
contrasting trim,
3-button placket,
drop tail, full cut.
S-XXL.

Bottle 61-860599

Bottle body, cognac trim.

Cognac 61-860601

Cognac body, bottle trim.



BRUNSWICK RIBBED SWEATSHIRT

61-860604

80% combed cotton white
ribbed fleece, full cut.
S-XXL.



BRUNSWICK JACKET

61-860607

100% cotton shell
with lining, full zip
front, knit waistband
and cuffs. S-XXL.



150 JACKET

61-860697

Button up in 100% cotton,
mid-weight brushed twill,
lightweight quilted lining,
antique brass snaps, inside
chest pocket. Moss. S-XXL.



150 POLO

61-860695

Cool, comfortable 100% combed cotton interlock,
2-button placket, ribbed cuffs, full cut. Black. S-XXXL.

150 Years

We're wearing our age well.



150 SWEATSHIRT

61-860696

It's 50% cotton/50% polyester fleece
crew neck. 100% natural color. S-XXL.

STRIKE A POSE!

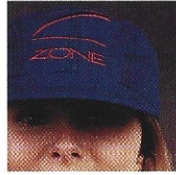


HAT CHECK

The best way to top your game is with an adjustable Brunswick hat (that means one size fits all, gang).



150 YEAR TWILL HAT
61-860698
Natural/Black



ZONE SUPPLEX™ HAT
61-860693
Navy



ZONE TWILL HAT
61-860692
Natural/Cranberry



RHINO PRO WOOL HAT
61-860598
Navy/Cream



RHINO PRO TWILL HAT
61-860597
Teal/Cream



BRUNSWICK SUPPLEX HAT
61-860608
Navy

Pro Stuff

TOWELS



ZONE EMBROIDERED GREEN
61-860705

ZONE PRINTED CREAM
61-860704

These soft, sturdy 100% cotton towels feature Zone or Rhino Pro logos.



RHINO PRO SCULPTURED GREEN
61-860609

RHINO PRO EMBROIDERED NAVY
61-860610

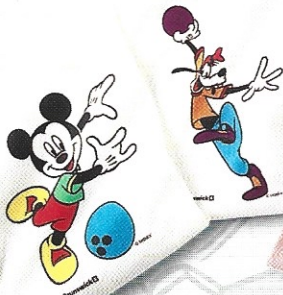
RHINO PRO PRINTED WHITE
61-860588

Kid Stuff



Sports Club

100% cotton and 100% authentic Mickey & Co. Sports Club, these Mickey, Minnie and Goofy character shirts and towels are for the young or young at heart.



MICKEY T-SHIRT
61-860700



GOOFY T-SHIRT
61-860702



MINNIE T-SHIRT
61-860701



MICKEY TOWEL
61-860707



GOOFY TOWEL
61-860709



MINNIE TOWEL
61-860708

Sizes 6/8, 10/12, 14/16, M, L, XL.

ACCESSORIES

Brunswick's One Stop Pro Shop is packed full of everything any bowler needs, all in handy single sizes, too. Which means our products can pack your pro shop with increased revenue. From skin protector to bowling tape to ball polish, bowlers can get a whole bottle or a roll, or get single servings. And get it all at one spot—your spot.

Introducing The One Stop Pro Shop.

The biggest name in bowling has listened to what bowlers, pro shop owners and distributors asked for. Now we've designed, developed and delivered the most unique hand accessory line in bowling: The Brunswick Professional line. With new products. Improved formulas. Perfect single packages. Easy-to-store bulk packages. And our easy-to-use display case. What's more, our price structure allows you to maximize your profits, while providing added value for your customers on any part of our entire Professional product line.



CLEAR GRIP™

Improved control lasts up to two hours, with no sticky chemical residue.

Liqui-Pack; 61-860637-150
1 oz. Bottle; 61-860637-018

SKIN PROTECTOR

Contains no ether. For softer, more flexible, longer-lasting protection.

Liqui-Pack; 61-860639-150

SKIN PROTECTOR REMOVER

Takes off all brands of protector, in a convenient towelette design.

Towelette; 61-860641-075
1/4 oz. Bottle; 61-860641-018

HAND CLEANER

Enhances your natural grip in an anti-perspirant formulation that lasts two hours.

Towelette; 61-860636-065

BOWLING TAPE

Pre-cut and ready to use, in white textured or black smooth tape.

1" White Textured; 30 pc. Box; 61-860652-008

3/4" White Textured; 30 pc. Box; 61-860653-008

1" Black Smooth; 30 pc. Box; 61-860654-008

3/4" Black Smooth; 30 pc. Box; 61-860655-008

PATCH PAK

Resealable bag contains approximately 20 standard 3/4-inch ovals and 20 extra-large round patches.

40 Patch Bag; 61-860640-100

BALL WAX

There's no more waiting for the ball polisher, so get a long-lasting shine, anytime.

Liqui-Pack; 61-860649-100
2 oz. Jar; 61-860649-012

BALL POLISH

Shines and conditions to a high-gloss finish with a single wipe-on application—and no hard buffing.

Liqui-Pack; 61-860661-120
4 oz. Bottle; 61-860661-012

BALL CLEANER

Perfect for reactive, urethane and plastic formulations, and it's sanctioned for competition.

Towelette; 61-860642-050
4 oz. Bottle; 61-860642-012

BALL CLEANING POLISH

Help reactive balls maintain high performance and strong back-end response, in a sanctioned formulation.

Liqui-Pack; 61-860643-090
4 oz. Bottle; 61-860643-012

TACK GRIP

Means maximum power and performance, with more consistent release.

Liqui-Pack; 61-860638-150
1 oz. Bottle; 61-860638-018

DISPOS-A-BOWL TOWEL

Durable, soft, washable and reusable, offering cloth quality inexpensively.

Towel; 61-860651-060

WAX-N-BUFF TOWEL

Strong, soft and absorbent, for waxing, buffing or cleaning balls, bags or shoes.

Towel; 61-860650-060

For more information call your local distributor or call:

PRO SHOPS
1-800-950-2695

BOWLING CENTERS
1-800-448-2695

Brunswick®

BOWLING IS SOLD ON BRUNSWICK WORLDWIDE.

Brunswick Bowling & Billiards Corporation

P.O. Box 329 • 525 West Laketon Avenue • Muskegon, Michigan 49443-0329

1-800-950-2695 • 616-725-3300 • Fax 616-725-4680

Brunswick® is a registered trademark of the Brunswick Corporation.