


COLUMBIA 300

Columbia bowls the world over®.

A blue globe with a yellow cartoon character and the word 'BULLY' in orange outline letters.

BULLY

Ball Catalog
2004-2005
www.columbia300.com

COLUMBIA
300

Columbia bowls the world over®

High Performance

New! Bully™

Bully your competition! It'll turn 'em Black & Blue! Partnering with BASF®, we developed a custom urethane system to fit today's challenging conditions. We targeted a strong hooking coverstock with a continuous backend. The result is our new M80™ coverstock, a revolutionary reactive formula that gives the reaction of particle without particle. It'll hook in heavy oil and create more midlane with a smooth controllable break point. Then, our R&D team designed the new mallet core to release M80's power. This core utilizes an asymmetric design with extension arms that minimize the mass bias so the ball doesn't hook too early.

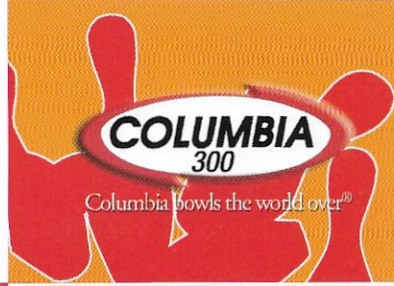


BULLY™
Black & Blue
#1015-10--XX (12-16 lbs.)



12-13 lbs. 14-16 lbs.

High Performance



Full Throttle®

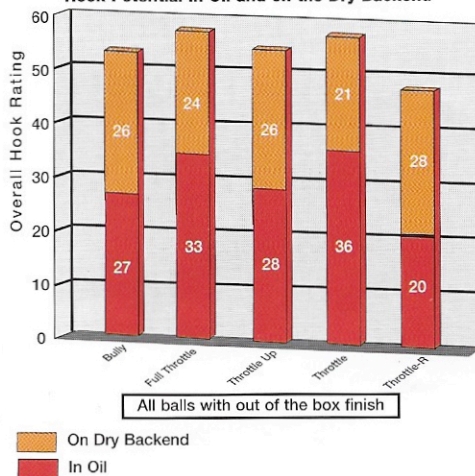
Release the Power and go Full Throttle™! Get the Cam Shaft™ core experience under your belt and you'll never play the same. We've lowered the Rg of this triple flip block core to produce quicksilver revs in the midlane. And we floored the Accelerator™ Reactive Coverstock for unmatched performance in medium to heavy oil. Go Full Throttle and be the first to cross the finish line.

FULL THROTTLE™
Blue/Black
#Z53-10-XX (12-16 lbs.)



12-13 lbs. 14-16 lbs.

Hook Potential in Oil and on the Dry Backend



COLUMBIA
300

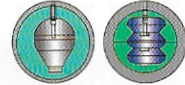
Columbia bowls the world over®

High Performance

Throttle Up®

This champ propels the Throttle family into a racing dynasty. It's on fire! It lets 'r rip with unforgiving power and control, creating pin action that's a gas! Expect nothing less from the high-speed, polished MuscleGT™ coverstock. The Cam Shaft™ core fuels the flames with a higher Rg and lower differential to rev later down the track. Throttle Up explodes straight down the middle with its eyes on the prize. Competition's in the ashes.

THROTTLE UP™
Blue/Orange
#Z28-10-XX (12-16 lbs.)



12-13 lbs. 14-16 lbs.



TECHNICAL DATA

BALL	COLORS	COVERSTOCK	CORE	RG 16#	DIFF.	WEIGHTS
Bully™	Black & Blue	M80™	14-16 lbs.: Asymmetrical, non-bias core 12-13 lbs.: Inverted bulb shape/integral core	2.475	0.053	12-16
Full Throttle®	Blue/Black Yellow/Orange Logo	Accelerator™	14-16 lbs.: Cam Shaft™ core with triple flip blocks 12-13 lbs.: Inverted bulb shape/integral core	2.484	0.050	12-16
Throttle Up®	Blue/Orange Neon Orange Logo	MuscleGT™	14-16 lbs.: Cam Shaft™ core with triple flip blocks 12-13 lbs.: Inverted bulb shape/integral core	2.524	0.048	12-16
Throttle®	Crimson/Purple/Bronze Yellow Logo	MuscleGT™	14-16 lbs.: Cam Shaft™ core with triple flip blocks 12-13 lbs.: Inverted bulb shape/integral core	2.519	0.057	12-16
Throttle-R®	Copper/Gold Pearl Silver Sparkle Logo	Pearlized Accelerator™	14-16 lbs.: Cam Shaft™ core with triple flip blocks 12-13 lbs.: Inverted bulb shape/integral core	2.519	0.057	12-16

High Performance

COLUMBIA
300

Columbia bowls the world over®

Throttle®

Let it loose and drive home the win! It outmaneuvers competition in heavy oil with its MuscleGT™ coverstock and incredible Cam Shaft™ core. Cam Shaft has been so meticulously engineered, it'll take your breath away with the speed it generates. Everyone else will be miles behind. So make like greased lightning and hang on!

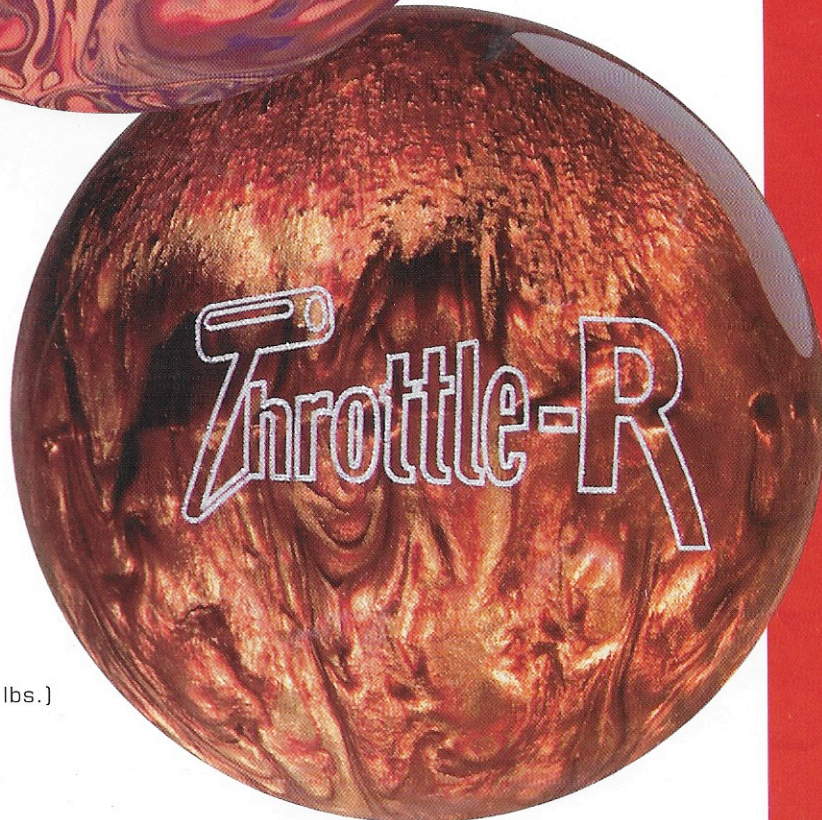
Throttle-R®

This hot number scorches the lane. It's high performance to the max. Thrills and chills are the order of the day. Its pearlized Accelerator™ reactive coverstock teamed up with the Cam Shaft™ core make even the most ordinary lane conditions sizzle. It's got the will to win, but the class to let you think you did it all by yourself!

THROTTLE™
Crimson/Purple/Bronze
#Y96-48-XX (12-16 lbs.)



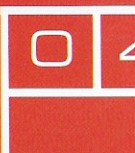
12-13 lbs. 14-16 lbs.



THROTTLE-R™
Copper/Gold Pearl
#Y94-02-XX (12-16 lbs.)



12-13 lbs. 14-16 lbs.



COLUMBIA
300

Columbia bowls the world over®

Performance

Messenger™ Titanium Pearl

Don't be fooled by this pearl's too-cool looks. It boils with scrappy determination. Its Super-Flex™ coverstock takes no prisoners in its power drive down the midlane and quick hook. And it attacks the backend with brute force, ripping into the win to collect the jackpot.

Messenger Titanium Traction™

Traction gives this speed demon its ammunition. Our latest Messenger™ mate is the sharpest dull ball around. Its all-new finish grabs its way through oil, and it's armed with a new enhanced Super-Flex™ reactive coverstock. The competition gets a clear message that's right on target.

MESSENGER™ TITANIUM PEARL
Black/Gold Pearl
#N96-02-XX (12-16 lbs.)



12-13 lbs. 14-16 lbs.

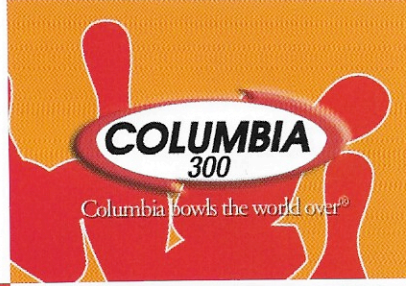


MESSENGER TI TRACTION™
Blue/Wine/Jade
#Z15-48-XX (12-16 lbs.)



12-13 lbs. 14-16 lbs.

Performance



FORMULA™
Teal/Blue/Red
#Z42-48-XX (12-16 lbs.)



12-13 lbs. 14-16 lbs.



Formula™

We've created the perfect FORMULA™! Our breakthrough discovery lets you turn up the heat. Get used to perfect scores with the combination of our new stair-step core plus our new coverstock, Vaccine™. It's an outstanding performer with excellent control. So reinforce your skill with the force of science. FORMULA's the miracle cure you've been looking for.

Detour™

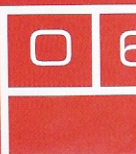
Cut to the chase and throw 'em a curve. Trust Detour™ to take your game in the right direction. Its Super-Flex™ coverstock creates good length and a strong backend motion on most lane conditions. You'll get your game going on a new course and keep your budget right on track.



DETOUR™
Red/Purple/Black
#Z64-48-XX (12-16 lbs.)



12-13 lbs. 14-16 lbs.



COLUMBIA
300

Columbia bowls the world over[®]

2-Piece Reactive Entry Level

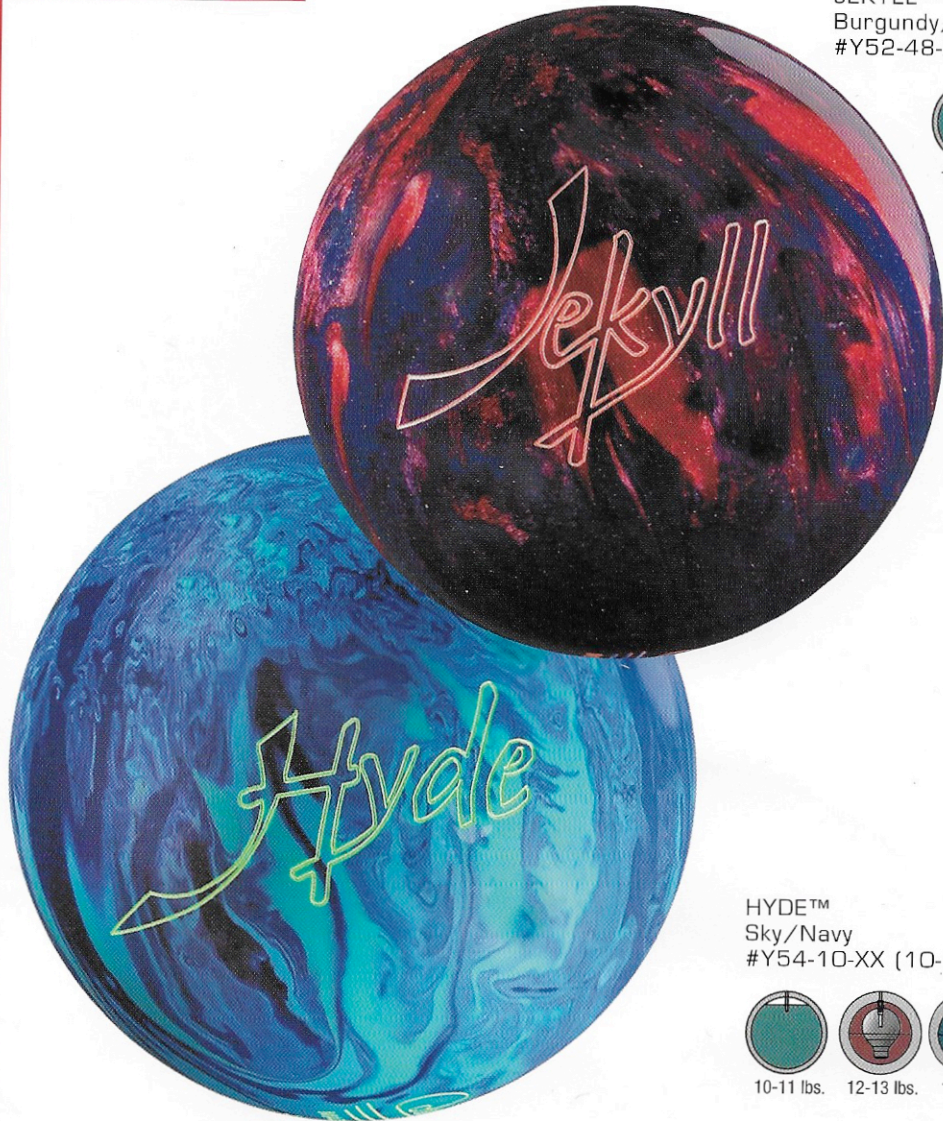
Jekyll™

Beware. This worldly performer harbors a secret potion. It changes into a sly, single-minded ball that needs to win, especially on normal lane conditions. The operative word is dense. The dense core and dense flip block give the ball a weight advantage and more track flare. And the handsome polished pearlized coverstock charges it to slide through oil and flip on the dry backend. Too smart.

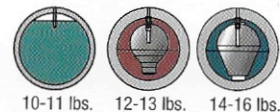
Hyde™

With all its rich blue colors, this ball is stormy and menacing. Oil and friction ignite its wrath and it lashes out at the pins with Super-Flex™ coverstock surrounding a dense polymer core. With more hook in oil and a wicked arcing motion, it launches a headstrong run for the finish with a continuous backend motion. Victory is yours.

JEKYLL™
Burgundy/Purple Pearl
#Y52-48-XX (10-16 lbs.)



HYDE™
Sky/Navy
#Y54-10-XX (10-16 lbs.)



TECHNICAL DATA

BALL	COLORS	COVERSTOCK	CORE	RG 16#	DIFF.	WEIGHTS
Messenger™ Titanium Pearl	Black/Gold Pearl Peach Logo	Pearlized Multi-Color Super-Flex™ Reactive Urethane by BASF [®]	14-16 lbs.: Core-in-a-core technology with enlarged flip blocks with fired, undrillable Titanium Ceramic core 12-13 lbs.: Inverted bulb shape/integral core with Titanium satellite	2.527	0.043	12-16
Messenger™ Titanium Traction	Blue/Wine/Jade Yellow/Orange Logo	Enhanced Super-Flex™ Reactive Urethane by BASF [®]	14-16 lbs.: Core-in-a-core technology with enlarged flip blocks with fired, undrillable Titanium Ceramic core 12-13 lbs.: Inverted bulb shape/integral core with Titanium satellite	2.509	0.050	12-16
Formula™	Teal/Blue/Red Silver Sparkle Logo	Vaccine™ large particle	14-16 lbs.: Stair Step top core with bottom flip block 12-13 lbs.: Inverted bulb shape/integral core	2.498	0.045	12-16
Delour™	Red/Purple/Black Neon Yellow Logo	Multi-Color Super-Flex™ Reactive Urethane by BASF [®]	14-16 lbs.: Inverted Stair Step core with dual flip blocks 12-13 lbs.: Inverted bulb shape/integral core	2.488	0.037	12-16
Jekyll™	Burgundy/Purple Pearl Neon Red Logo	Pearlized Multi-Color Super-Flex™ Reactive Urethane by BASF [®]	12-15 lbs.: High density polymer core in stabilizer core with flip block 10-11 lbs.: Round core with pancake weight block	2.490	0.045	10-16
Hyde™	Sky/Navy Neon Green Logo	Multi-Color Super-Flex™ Reactive Urethane by BASF [®]	14-16 lbs.: High density polymer core in stabilizer core 12-13 lbs.: Inverted bulb shape/integral core 10-11 lbs.: Round core with pancake weight block	2.484	0.040	10-16
Trooper™	Purple/Gold Sparkle Neon Red/Neon Green Logo	Pearlized Urethane by BASF [®]	10-16 lbs.: Modified 3-piece core with high-density offset internal puck	2.631	0.030	10-16
Super Trooper™	Black/Violet Silver Sparkle Logo	Multi-Color Super-Flex™ Reactive Urethane by BASF [®]	14-16 lbs.: Dense polymer core body with no flip blocks 12-13 lbs.: Inverted bulb shape/integral core 10-11 lbs.: Round core with pancake weight block	2.487	0.020	10-16

Entry Level

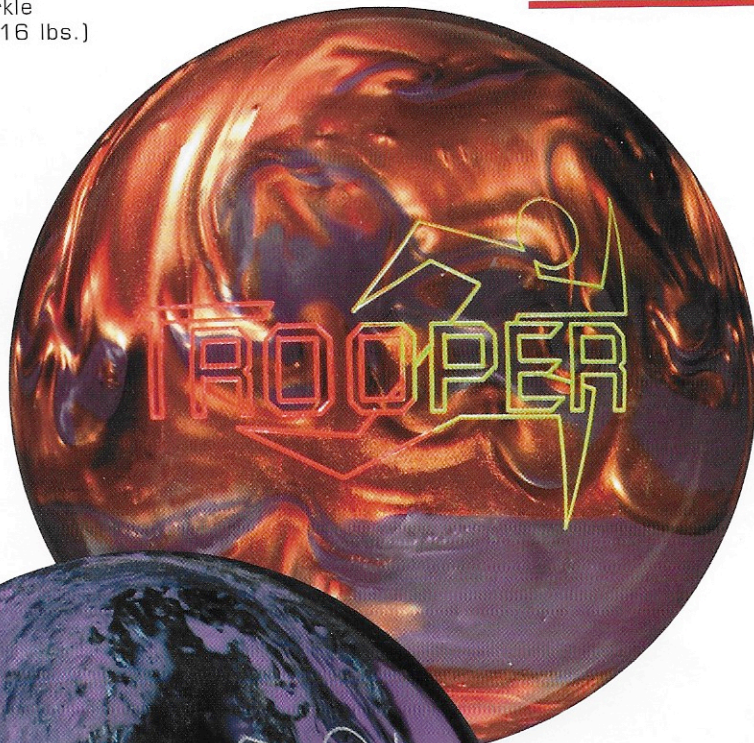
COLUMBIA
300

Columbia bowls the world over®

TROOPER™
Purple/Gold Sparkle
#Z89-10-XX (10-16 lbs.)



10-16 lbs.



SUPER TROOPER™
Black/Violet
#Z87-48-XX (10-16 lbs.)



10-11 lbs.



12-13 lbs.



14-16 lbs.

Trooper™

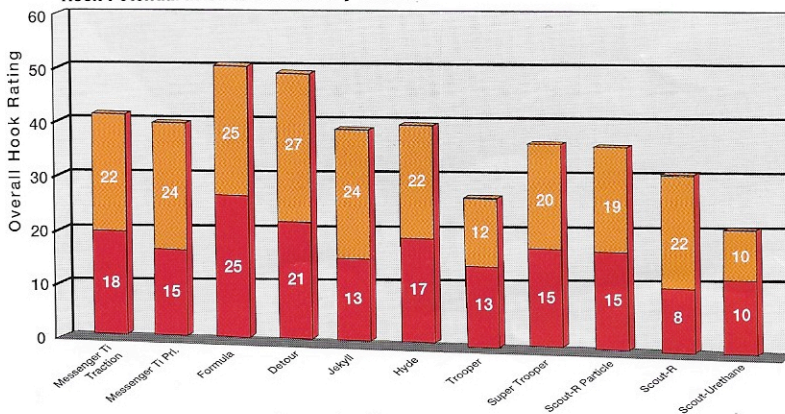
This is a real Trooper™. Trust it to keep you out of trouble. It's ready for action with an offset puck, high Rg and medium differential. This durable urethane hero, sporting bold action colors, comes to the rescue with expert timing. Pearlized and polished, it slips through oil. One tough Trooper.

Super Trooper™

Super Trooper™ saves the day! Its controlled performance turns even the casual bowler into a winner. With our extremely popular Rock On™ core body, no flip blocks and a lower Rg for less flare. Look for an earlier roll with a smooth backend reaction. Its Super-Flex™ coverstock is impressively sharp. Territorial on medium to dry lanes, Super Trooper plays for keeps. And it's a great value to boot!

All balls with out of the box finish

Hook Potential in Oil and on the Dry Backend



COLUMBIA
300

Columbia bowls the world over[®]

Beginner 3-Piece

Our Scout™ Group Is All The Things A Scout Should Be

Two new colors join our brave and strong fighters. And they fit right in. They share sterling principles, they're smart and reliable, and they know their duties. Perseverance, sharp timing and skillful accuracy. Yet each has its own strength. For control and a smooth roll, choose non-reactive. More hook in oil, go for particle. And for length and a sharp turn down the lane, any of our pearlized quintet will satisfy. So here's a salute to the Scouts!

SCOUT™/R PARTICLE
Burgundy/Blue
#W59-48-XX (10-16 lbs.)



10-16 lbs.



Beginner 3-Piece

COLUMBIA
300

Columbia bowls the world over®

NEW COLOR!
SCOUT™ REACTIVE PEARL
Burgundy/Emerald/Blue Pearl
N33-80-XX (10-16 lbs.)



Our Scout™
Group Is All
The Things A
Scout Should
Be



NEW COLOR!
SCOUT™ REACTIVE PEARL
Cherry/Silver Pearl
N33-85-XX (10-16 lbs.)





Columbia bowls the world over®

Beginner 3-Piece

Our Scout™
Group Is All
The Things A
Scout Should
Be

SCOUT™ REACTIVE PEARL
Blue/Gold Pearl
N33-10-XX (10-16 lbs.)



10-16 lbs.



SCOUT™ REACTIVE PEARL
Red/Violet Pearl
#N33-77-XX (10-16 lbs.)

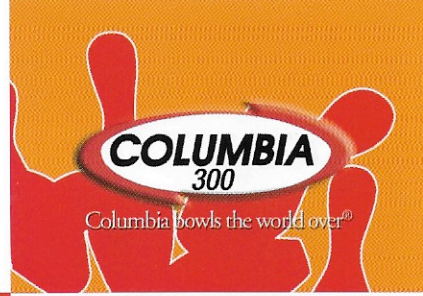


10-16 lbs.

1

1

Beginner 3-Piece



SCOUT™ REACTIVE PEARL
Black/Red Pearl
#N33-48-XX (10-16 lbs.)



10-16 lbs.

Our Scout™
Group Is All
The Things A
Scout Should
Be



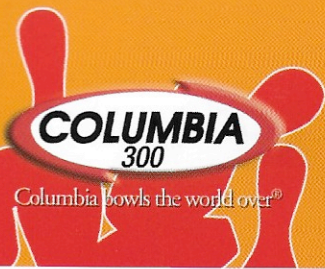
SCOUT™
Black
#N44-02-XX (10-16 lbs.)



10-16 lbs.

TECHNICAL DATA

BALL	COLORS	COVERSTOCK	CORE	RG 16#	DIFF	WEIGHTS
Scout™/R Particle	Burgundy/Blue Neon Red Logo	TEC2™ coverstock incorporating reactive cover with an enhanced lane-gripping additive	10-16 lbs.: Round core with pancake weight block and high-density offset internal puck	2.631	0.030	10-16
Scout™ Reactive Pearl	Burgundy/Emerald/ Blue Pearl Neon Yellow Logo Cherry/Silver Pearl Gold Sparkle Logo Blue/Gold Pearl Silver Sparkle Logo Red/Violet Pearl Hot Pink Logo Black/Red Pearl Silver Logo	Pearlized Multi-Color Super-Flex™ Reactive Urethane by BASF®	10-16 lbs.: Round core with pancake weight block and high-density offset internal puck	2.631	0.030	10-16
Scout™	Black Neon Red Logo	High-Friction, Non-Reactive Urethane	10-16 lbs.: Round core with pancake weight block	2.654	0.010	10-16

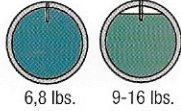


Polyester

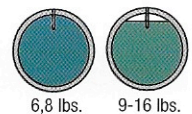
WHITE DOT®

If there were a Ball of Fame, the White Dot would be in the limelight. Its presence on the lanes is a time-honored tradition. And for good reason. White Dot is a pro, respected by seasoned players and a hit with the new generation. A veteran that just gets better every year. And with three saucy new colors, it still dares to be different.

NEW COLOR!
White Dot®
Galaxy Sparkle (Glow)
#N31-69-XX
(6, 8, 9-16 lbs.)



NEW COLOR!
White Dot®
Emerald/Bronze Pearl
#N31-68-XX
(6, 8, 9-16 lbs.)



Polyester

COLUMBIA
300

Columbia bowls the world over®

NEW COLOR!
White Dot®
Cherry Pearl
#N31-70-XX
(6, 8, 9-16 lbs.)



6,8 lbs.



9-16 lbs.

WHITE DOT®



White Dot®
Gold/Purple/Red Pearl
#N31-65-XX
(6, 8, 9-16 lbs.)



6,8 lbs.



9-16 lbs.

1

4

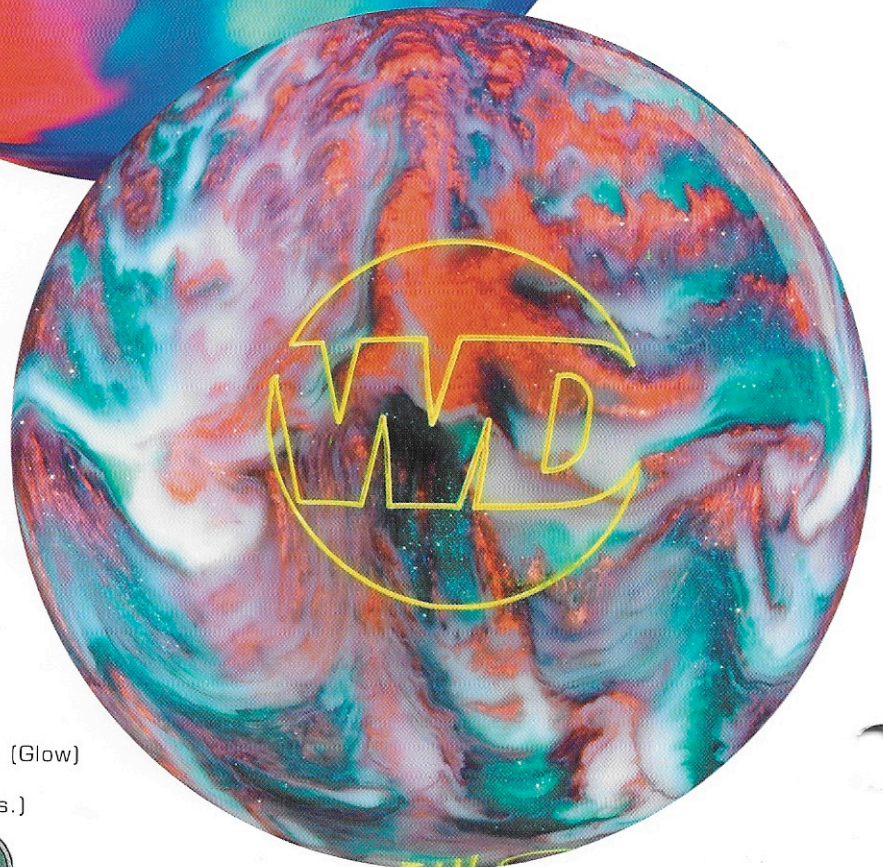
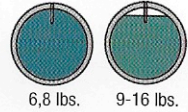
COLUMBIA
300

Columbia bowls the world overSM

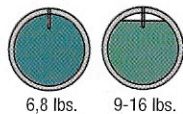
Polyester

WHITE DOT®

White Dot®
Rose/Green/Blue (Glow)
#N31-66-XX
(6, 8, 9-16 lbs.)



White Dot®
Ruby/Teal/Ice (Glow)
#N31-67-XX
(6, 8, 9-16 lbs.)



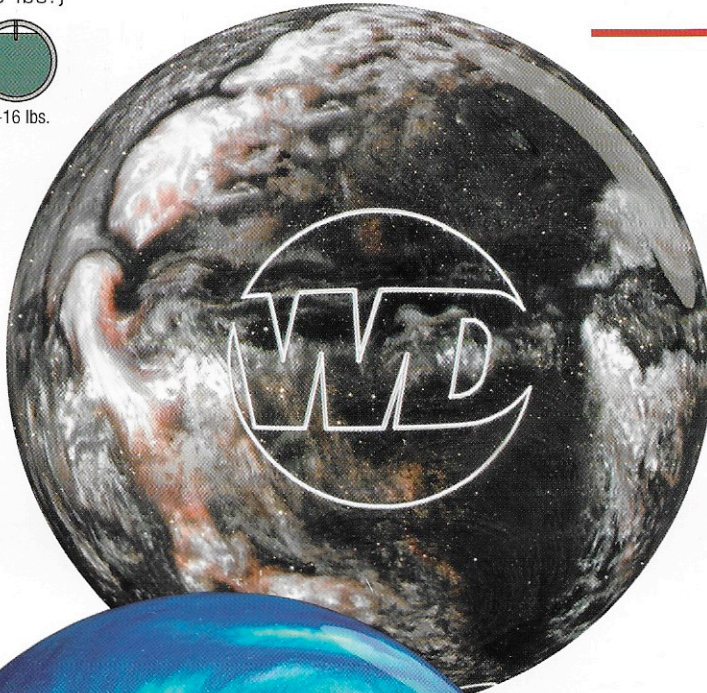
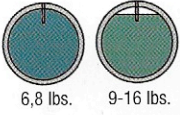
Polyester

COLUMBIA
300

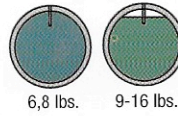
Columbia bowls the world over®

WHITE DOT®

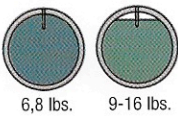
White Dot®
Black/Silver/Caramel Pearl
#N31-05-XX
(6, 8, 9-16 lbs.)

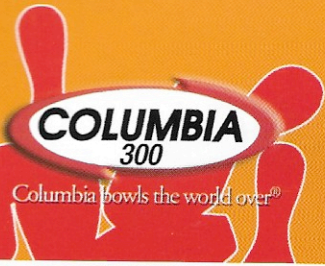


White Dot®
Blue Pearl
#N31-10-XX
(6, 8, 9-16 lbs.)



White Dot®
Patriot Swirl (Glow)
#N31-60-XX
(6, 8, 9-16 lbs.)

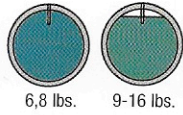




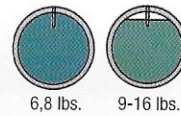
Polyester

WHITE DOT®

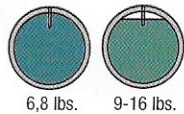
White Dot®
Purple/Green/White Sparkle
Pearl
#N31-62-XX
(6, 8, 9-16 lbs.)



White Dot®
Fuchsia/Blue/Black (Glow)
#N31-63-XX
(6, 8, 9-16 lbs.)



White Dot®
Red/Orange/Black (Glow)
#N31-64-XX
(6, 8, 9-16 lbs.)



Polyester

COLUMBIA
300

Columbia bowls the world over®

Blue Dot®

Ever the competitor, this trusty sport goes the distance. It clobbers the driest lanes with its classic, high-tensile polyester cover. Our Blue Dot is always a welcome sight. A gentle reminder that seasoned experience and good, solid design are winners in any player's book.

Blue Dot®
Silver
#308-42-XX (10-16 lbs.)



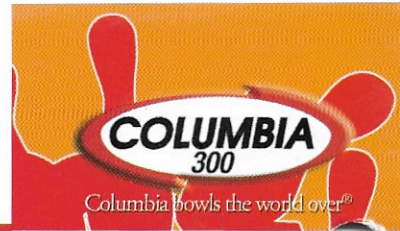
10-16 lbs.



TECHNICAL DATA

BALL	COLORS	COVERSTOCK	CORE	RG 16#	DIFF.	WEIGHTS
Blue Dot®	Silver White Logo	Hard Polyester	10-16 lbs.: Round core with pancake weight block			10-16
White Dot®	Galaxy Sparkle (Glow) White Logo Emerald/Bronze Pearl White Logo Cherry Pearl White Logo Gold/Purple/Red Pearl Gold Sparkle Logo Rose/Green/Blue (Glow) White Logo Ruby/Teal/Ice (Glow) Neon Yellow Logo Black/Silver/Caramel Pearl White Logo Blue Pearl White Logo Patriot Swirl (Glow) White Logo Purple/Green/White Sparkle Pearl White Logo Fuchsia/Blue/Black (Glow) Silver Sparkle Logo Red/Orange/Black (Glow) Neon Red Logo	Medium Hard Polyester	9-16 lbs.: Round core with pancake weight block 6, 8 lbs.: Foam urethane	2.716	0.019	6, 8, 9-16

Technical Data



BALL	COLORS	COVERSTOCK	CORE	FINISH	RG 16#	DIFF.	WEIGHTS	ITEM NUMBER
Bully™	Black & Blue Neon Yellow/Neon Red Logo	M80™	14-16 lbs.: Asymmetrical, non-mass bias core 12-13 lbs.: Inverted bulb shape/integral core	Smooth (1200 grit)	2.475	0.053	12-16	1015-10-XX
Full Throttle®	Blue/Black Yellow/Orange Logo	Accelerator™	14-16 lbs.: Cam Shaft™ core with triple flip blocks 12-13 lbs.: Inverted bulb shape/integral core	Fine	2.484	0.050	12-16	Z53-10-XX
Throttle Up®	Blue/Orange Neon Orange Logo	MuscleGT™	14-16 lbs.: Cam Shaft™ core with triple flip blocks 12-13 lbs.: Inverted bulb shape/integral core	Polished	2.524	0.048	12-16	Z28-10-XX
Throttle®	Crimson/Purple/Bronze Yellow Logo	MuscleGT™	14-16 lbs.: Cam Shaft™ core with triple flip blocks 12-13 lbs.: Inverted bulb shape/integral core	Smooth (1200 grit)	2.519	0.057	12-16	Y96-48-XX
Throttle-R®	Copper/Gold Pearl Silver Sparkle Logo	Pearlized Accelerator™	14-16 lbs.: Cam Shaft™ core with triple flip blocks 12-13 lbs.: Inverted bulb shape/integral core	Polished	2.519	0.057	12-16	Y94-02-XX
Messenger™ Ti Pearl	Black/Gold Pearl Peach Logo	Pearlized Multi-Color Super-Flex™ Reactive Urethane by BASF	14-16 lbs.: Core-in-a-core technology with enlarged flip blocks with fired, undrillable Titanium Ceramic core 12-13 lbs.: Inverted bulb shape/integral core with Titanium satellite	Polished	2.527	0.043	12-16	N96-02-XX
Messenger™ Ti Traction	Blue/Wine/Jade Yellow/Orange Logo	Enhanced Super-Flex™ Reactive Urethane by BASF®	14-16 lbs.: Core-in-a-core technology with enlarged flip blocks with fired, undrillable Titanium Ceramic core 12-13 lbs.: Inverted bulb shape/integral core with Titanium satellite	Smooth	2.509	0.050	12-16	Z15-48-XX
Formula™	Teal/Blue/Red Silver Sparkle Logo	Vaccine™	14-16 lbs.: Stair step top core with bottom flip block 12-13 lbs.: Inverted bulb shape/integral core	Compound	2.498	0.045	12-16	Z42-48-XX
Detour™	Red/Purple/Black Neon Yellow Logo	Multi-Color Super-Flex™ Reactive Urethane by BASF®	14-16 lbs.: Inverted stair step core with dual flip blocks 12-13 lbs.: Inverted bulb shape/integral core	Compound	2.488	0.037	12-16	Z64-48-XX
Jekyll™	Burgundy/Purple Pearl Neon Red Logo	Pearlized Multi-Color Super-Flex™ Reactive Urethane by BASF	12-16 lbs.: High density polymer core in stabilizer core with flip block 10-11 lbs.: Round core with pancake weight block	Polished	2.490	0.045	10-16	Y52-48-XX
Hyde™	Sky/Navy Neon Green Logo	Multi-Color Super-Flex™ Reactive Urethane by BASF®	14-16 lbs.: High density polymer core in stabilizer core 12-13 lbs.: Inverted bulb shape/integral core 10-11 lbs.: Round core with pancake weight block	Sheen (600 Grit)	2.484	0.040	10-16	Y54-10-XX
Trooper™	Purple/Gold Sparkle Neon Red/Neon Green Logo	Pearlized High-Friction, Non- Reactive Urethane	10-16 lbs.: Modified 3-piece core with high-density offset internal puck	Polished	2.631	0.030	10-16	Z89-10-XX
Super Trooper™	Black/Violet Silver Sparkle Logo	Multi-Color Super-Flex™ Reactive Urethane by BASF®	14-16 lbs.: Dense polymer core with no flip blocks 12-13 lbs.: Inverted bulb shape/integral core 10-11 lbs.: Round core with pancake weight block	Polished	2.487	0.020	10-16	Z87-48-XX
Scout™/R Particle	Burgundy/Blue Neon Red Logo	TEC2™ coverstock incorporating reactive cover with an enhanced lane-gripping additive	10-16 lbs.: Round core with pancake weight block and high- density offset internal puck	Sheen (600 Grit)	2.631	0.030	10-16	W59-48-XX
Scout™ Reactive Pearl	Blue/Gold Pearl Silver Sparkle Logo Black/Red Pearl Silver Logo Red/Violet Pearl Hot Pink Logo Burgundy/Emerald/ Blue Pearl Neon Yellow Logo Cherry/Silver Pearl Gold Sparkle Logo	Pearlized Multi-Color Super-Flex™ Reactive Urethane by BASF	10-16 lbs.: Round core with pancake weight block and high-density offset internal puck	Polished	2.631	0.030	10-16	Blue/Gold Pearl N33-10-XX Black/Red Pearl N33-48-XX Red/Violet Pearl N33-77-XX Burgundy/Emerald/Blue Pearl N33-80-XX Cherry/Silver Pearl N33-85-XX
Scout™	Black Neon Red Logo	High-Friction, Non-Reactive Urethane	10-16 lbs.: Round core with pancake weight block	600 Grit Wet Sanded	2.654	0.010	10-16	N44-02-XX
White Dot®	Black/Silver/Caramel Prl White Logo Blue Pearl White Logo Patriot Swirl White Logo (Glow) Pur/Gm/Wht Sparkle Prl White Logo Fuchsia/Blue/Black Silver Sparkle Logo (Glow) Red/Orange/Black Neon Red Logo (Glow) Gold/Purple/Red Pearl Gold Sparkle Logo Rose/Green/Blue White Logo (Glow) Ruby/Teal/Ice Neon Yellow Logo (Glow) Emerald/Bronze White Logo Galaxy Sparkle White Logo (Glow) Cherry Pearl White Logo	Medium Hard Polyester	9-16 lbs.: Round core with pancake weight block 6, 8 lbs.: Foam urethane	Polished	2.716	0.019	6,8, 9-16	Black/Silver/Caramel Prl N31-05-XX Blue Pearl N31-10-XX Patriot Swirl N31-60-XX Purple/Green/White Sparkle Prl N31-62-XX Fuchsia/Blue/Black N31-63-XX Red/Orange/Black N31-64-XX Gold/Purple/Red Pearl N31-65-XX Rose/Green/Blue N31-66-XX Ruby/Teal/Ice N31-67-XX Emerald/Bronze N31-68-XX Galaxy Sparkle N31-69-XX Cherry Pearl N31-70-XX
Blue Dot®	Silver White Logo	Hard Polyester	10-16 lbs.: Round core with pancake weight block	Polished			10-16	308-42-XX

AUTHORIZED DISTRIBUTOR / PRO SHOP



COLUMBIA 300, INC.
5005 WEST AVE.
SAN ANTONIO, TX 78213
TOLL FREE: 1-800-531-5920
210-344-9211, FAX 210-349-8672
www.columbia300.com