



Columbia bowls the world over.®

2003/04 ball catalog



www.columbia300.com

COLUMBIA 300

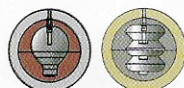
HIGH PERFORMANCE

THROTTLE™
Crimson/Purple/Bronze
#Y96-48-XX (12-16 lbs.)



NEW! THROTTLE™

You've got the drive. Now, with our new Throttle, you can floor it. With its MuscleGT™ coverstock and startling new Cam Shaft™ core, the Throttle thirsts for heavy oil. This newly engineered, supersonic Cam Shaft™ core gets so serious, your pulse will race. It's totally different. Competition will come screeching to a halt. Accelerate your game. Full throttle.



12-13 lbs. 14-16 lbs.

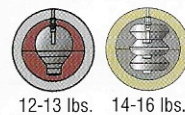
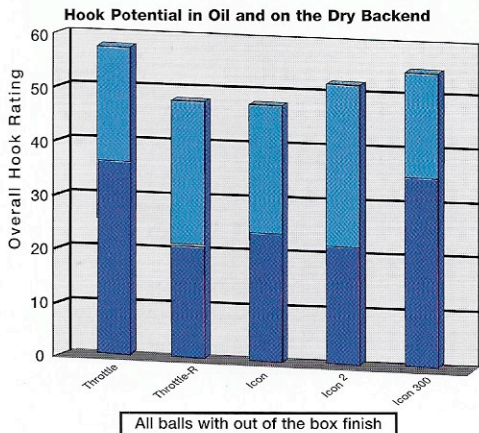
HIGH PERFORMANCE



THROTTLE-R™
 Copper/Gold Pearl
 #Y94-02-XX (12-16 lbs.)

NEW! THROTTLE-R™

Add the new Throttle-R to the mix, and you'll see that our Throttle™ series is the raciest on the track. The thrill of Throttle-R is in watching this baby roar down the lane. Ever the aggressor, it turns common lane conditions into spitfire raceways. Its new pearlized Accelerator™ reactive coverstock is also paired up with our new Cam Shaft™ core. It's got the spunk to win with you firmly in the driver's seat.



12-13 lbs. 14-16 lbs.



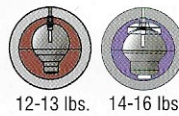
Columbia bowls the world over.®

HIGH PERFORMANCE

ICON™
Sky/Purple/Brick
#W83-48-XX (12-16 lbs.)



ICON™
Our astonishing Columbia 300® ICON family raises the bar. In its purest form, ICON displays unprecedented versatility in oil. Our new Muscle™ coverstock turns one ball into two. When sanded, ICON has a strong hook with continuous backend motion. Polish it and enjoy an aggressive skid/flip reaction. Power and hook in heavy oil. Superior backend reaction on medium conditions. ICON performs. Period.



TECHNICAL DATA

BALL	COLORS	COVERSTOCK	CORE	RG 16#	DIFF.	WEIGHTS
Throttle™	Crimson/Purple/Bronze Yellow Logo	MuscleG™	14-16 lbs.: Cam Shaft™ core with triple flip blocks 12-13 lbs.: Inverted bulb shape/integral core	2.519	0.057	12-16
Throttle-R™	Copper/Gold Pearl Silver Sparkle Logo	Pearlized Accelerator™	14-16 lbs.: Cam Shaft™ core with triple flip blocks 12-13 lbs.: Inverted bulb shape/integral core	2.519	0.057	12-16
ICON™	Sky/Purple/Brick Neon Yellow/Green Logo	Muscle™	14-16 lbs.: Dense polymer core with dense energy flip block 12-13 lbs.: Inverted bulb shape/integral core	2.544	0.038	12-16
ICON2™	Red/Purple/Blue White Logo	Muscle™	14-16 lbs.: Medium Rg core with bottom flip block 12-13 lbs.: Inverted bulb shape/integral core	2.530	0.036	12-16
ICON300™	Purple/Red/Orange Gold Sparkle Logo	MusclePlus™	14-16 lbs.: Dense polymer core with dense energy flip block 12-13 lbs.: Inverted bulb shape/integral core	2.528	0.040	12-16

HIGH PERFORMANCE

ICON²TM

Want adaptability and then some? ICON² is your number. With ICON², you're ready for anything. Power's in the palm of your hand as you send it on its mission. Watch it flex its MuscleTM, our new miracle coverstock. ICON² does the job with the extra boost of a later and stronger move on the backend in addition to its raw talent to adjust. ICON² is the perfect complement to its ICON peer.



12-13 lbs. 14-16 lbs.

ICON²TM

Red/Purple/Blue
#Y14-48-XX (12-16 lbs.)

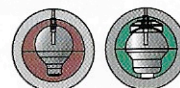


ICON₃₀₀TM

Purple/Red/Orange
#Y31-48-XX (12-16 lbs.)

ICON₃₀₀TM

The best is never good enough for our new ICON₃₀₀. It lives for the conquest. Our incredible new MusclePlusTM coverstock gives it more teeth to tear through heavy oil. With MusclePlus, a large, solid additive creates a more porous shell. This advantage gives ICON₃₀₀ a strong, continuous motion and the most hook of the ICON clan.



12-13 lbs. 14-16 lbs.



Columbia bowls the world over.[®]

MID PERFORMANCE

MESSENGER™ TITANIUM

A solid fighter through and through. Columbia 300®'s ball of the decade is on everybody's list of favorites. Futuristic core technology and Super-Flex™ reactive coverstock give it its punch. It's definitely on your team, with more rotation and hook potential, a strong arc at the break point, and plenty of energy stored up for a vigorous backend reaction. It will willingly share the glory with its handler.



12-13 lbs. 14-16 lbs.

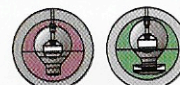


MESSENGER™ TITANIUM
Red/Blue
#M88-48-XX (12-16 lbs.)



MESSENGER™ TITANIUM PEARL

There's more to this dazzling beauty than meets the eye. On the lanes, it bares its teeth. Watch the endless rush of power midlane and wicked hook from its no-fear Super-Flex™ cover. Then, with great style, it makes the backend attack look like a piece of cake as it heads home and seizes possession of the pocket.



12-13 lbs. 14-16 lbs.

MESSENGER™ TITANIUM PEARL

Black/Gold Pearl
#N96-02-XX (12-16 lbs.)

MID PERFORMANCE

MESSENGER™ TITANIUM PEARL B/S/P

Make sure this Messenger Ti Pearl is in your hands and not your opponents'. Its eye is on the prize every second. Powerful rotation signals greater hook potential. Concentrated mass at the center does the trick. Give its aggressive pearled Super-Flex™ shell credit for the skid through the heads and sharp turn on the backend. And even with the celestial flash of rich colors, it's still a value.



12-13 lbs. 14-16 lbs.

MESSENGER™ TITANIUM PEARL B/S/P

Blue/Silver/Purple Pearl
#W41-02-XX (12-16 lbs.)



MESSENGER™ BLACK

Let this sleek beauty work its black magic for you on wet/dry lanes. The Flexathane™ urethane coverstock lets you show off total control. Messenger Black performs at the top of its game as it dominates the lane with blurring speed and a flawless arcing motion. You stay calm, cool and collected while your competition is awash in sweat.

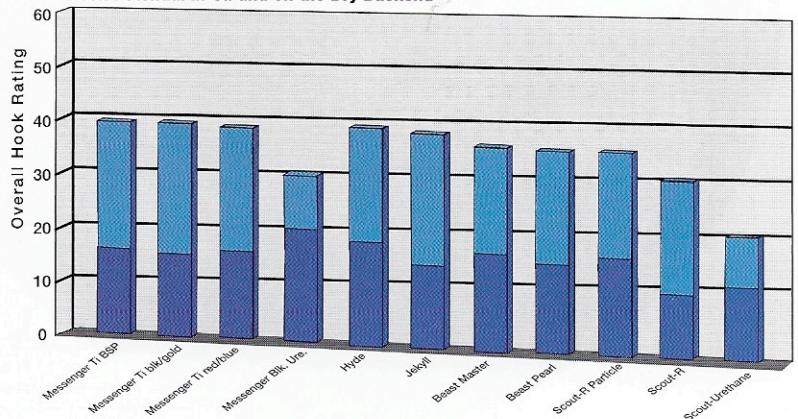


10-11 lbs. 12-13 lbs. 14-16 lbs.

MESSENGER™ BLACK

Black
#V59-02-XX (10-16 lbs.)

All balls with out of the box finish
Hook Potential in Oil and on the Dry Backend

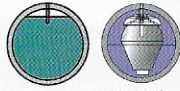


Columbia bowls the world over.®

MID PERFORMANCE

JEKYLL™
 Burgundy/Purple Pearl
 #Y52-48-XX (10-16 lbs.)

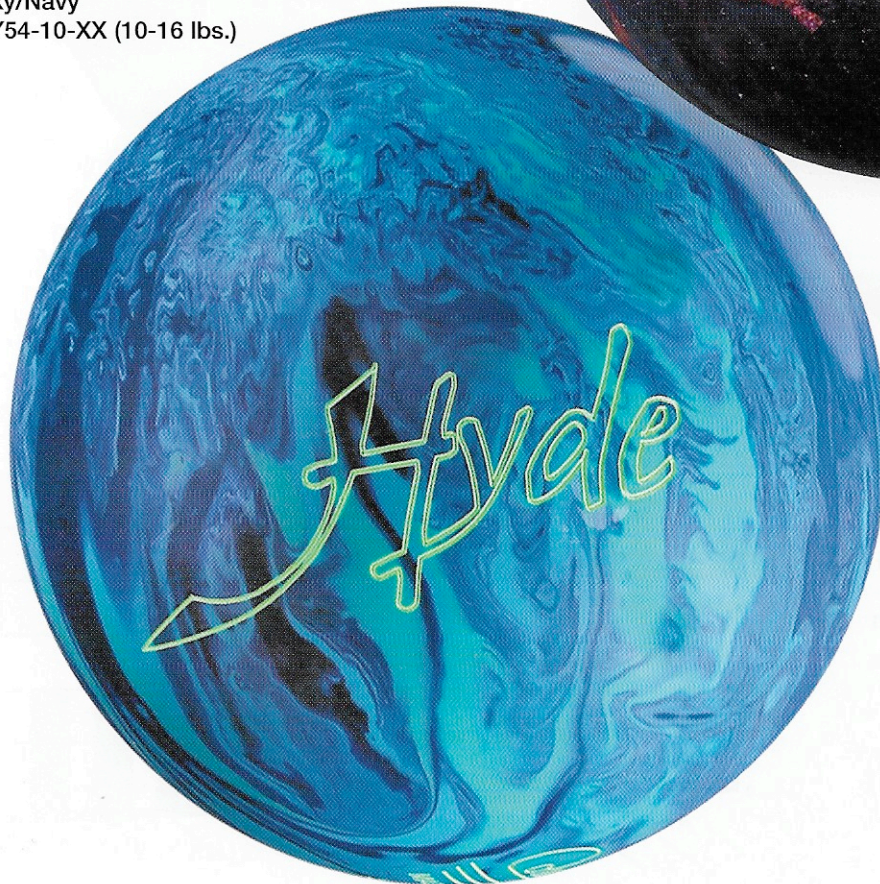
JEKYLL™
 With its smart, polished exterior, Jekyll is nobody's fool. It's shrewd to the core. On any normal lane condition, this dependable player won't be beat. Its dense core shifts more weight to the center of the ball, and the dense flip block increases differential for more track flare. More than cosmetic, the pearlized polished coverstock lets it skid through oil, then flip on the dry backend. It knows its every move.



10-11 lbs. 12-16 lbs.



HYDE™
 Sky/Navy
 #Y54-10-XX (10-16 lbs.)



HYDE™
 Beneath the slick sheen lies a secret chemistry that brings out the aggressive monster. Hyde stalks its prey with an unquenchable thirst for oil and friction. Its dense polymer core surrounded by Super-Flex™ coverstock is lethal. Watch for more hook in oil, a strong arcing motion, then on to a determined continuous backend motion for the finish. It's not satisfied until the job is done.

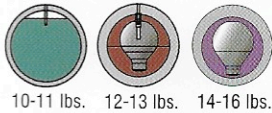


10-11 lbs. 12-13 lbs. 14-16 lbs.

MID PERFORMANCE

NEW! BEAST® MASTER

A masterful stroke! Combine our low flaring bulb-shaped core with our TEC²™ particle coverstock that incorporates reactive cover. Add to that a budget-sensitive ticket. The result is a beastly performer and a very civilized value. This territorial challenger chomps through oil with unrelenting energy. A hold that won't let go. A good complement to its Beast® Pearl counterpart.



10-11 lbs. 12-13 lbs. 14-16 lbs.

NEW! BEAST® MASTER

Purple
#Y64-48-XX (12-16 lbs)
#Y65-48-XX (10-11 lbs.)

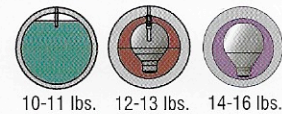


BEAST® PEARL with MICA

Release your Beast and pins know the end is in sight. They quiver as the drooling brute lunges their way, fueled by its Pearlized Flexcel® with MICA. And the fact that it has a tad less bite than our aggressive Super-Flex™ shell doesn't stand in its way. You can count on steadfast loyalty, stellar action and a down-to-earth price.

BEAST® PEARL with MICA

Purple Pearl
#M65-74-XX (12-16 lbs)
#M36-74-XX (10-11 lbs.)



10-11 lbs. 12-13 lbs. 14-16 lbs.

TECHNICAL DATA

BALL	COLORS	COVERSTOCK	CORE	RG 16#	DIFF.	WEIGHTS
Messenger™ Titanium	Red/Blue Neon Yellow Logo	Multi-Color Super-Flex™ Reactive Urethane by BASF®	14-16 lbs.: Core-in-a-core technology with enlarged flip blocks with fired, undrillable Titanium Ceramic core 12-13 lbs.: Inverted bulb shape/integral core with Titanium satellite	2.527	0.043	12-16
Messenger™ Titanium Pearl	Black/Gold Pearl Peach Logo	Pearlized Multi-Color Super-Flex™ Reactive Urethane by BASF®	14-16 lbs.: Core-in-a-core technology with enlarged flip blocks with fired, undrillable Titanium Ceramic core 12-13 lbs.: Inverted bulb shape/integral core with Titanium satellite	2.527	0.043	12-16
Messenger™ Titanium Pearl B/S/P	Blue/Silver/Purple Hot Pink Logo	Pearlized Multi-Color Super-Flex™ Reactive Urethane by BASF®	14-16 lbs.: Core-in-a-core technology with enlarged flip blocks with fired, undrillable Titanium Ceramic core 12-13 lbs.: Inverted bulb shape/integral core with Titanium satellite	2.509	0.050	12-16
Messenger™ Black	Black Neon Green Logo	Flexthane™ urethane with low percent of reactive blend	14-16 lbs.: Inverted bulb shaped core with flip block in stabilizer core 12-13 lbs.: Inverted bulb shape/integral core 10-11 lbs.: Round core with pancake weight block	2.525	0.047	10-16
Jekyll™	Burgundy/Purple Pearl Neon Red Logo	Pearlized Multi-Color Super-Flex™ Reactive Urethane by BASF®	12-16 lbs.: High density polymer core in stabilizer core with flip block 10-11 lbs.: Round core with pancake weight block	2.490	0.045	10-16
Hyde™	Sky/Navy Neon Green Logo	Multi-Color Super-Flex™ Reactive Urethane by BASF®	14-16 lbs.: High density polymer core in stabilizer core 12-13 lbs.: Inverted bulb shape/integral core 10-11 lbs.: Round core with pancake weight block	2.484	0.040	10-16
Beast® Master	Purple Peach Logo	TEC ² ™ particle coverstock incorporating reactive cover with enhanced lane-gripping additive	12-16 lbs.: Inverted bulb shape/integral core 10-11 lbs.: Round core with pancake weight block	2.533	0.020	10-16
Beast® Pearl with MICA	Purple Pearl Neon Red Logo	Pearlized Flexcel® with MICA	12-16 lbs.: Inverted bulb shape/integral core 10-11 lbs.: Round core with pancake weight block	2.522	0.018	10-16



Columbia bowls the world over.®

3-PIECE

THEY'RE SHARP, DEPENDABLE AND HIGHLY DECORATED.
THE SCOUT™ TROOP

Our stalwart Scouts welcome the new Scout™ Reactive Blue/Gold Pearl to the troop. And they all know the drill! They brave the toughest obstacles with fearless endurance, manipulating the lane with drop-jaw timing, trampling pins, racking up points. Each has its specialty. Non-reactive for control and a smooth look down the lane. Particle for more hook in oil. And our pearlized fearless foursome for length and a sharp turn down the lane.



SCOUT™/R PARTICLE
Burgundy/Blue
#W59-48-XX (10-16 lbs.)



10-16 lbs.

3-PIECE



SCOUT™ REACTIVE PEARL
Red/Violet Pearl
#N33-77-XX (10-16 lbs.)



10-16 lbs.



NEW COLOR!
SCOUT™ REACTIVE PEARL
Blue/Gold Pearl
#N33-10-XX (10-16 lbs.)



10-16 lbs.



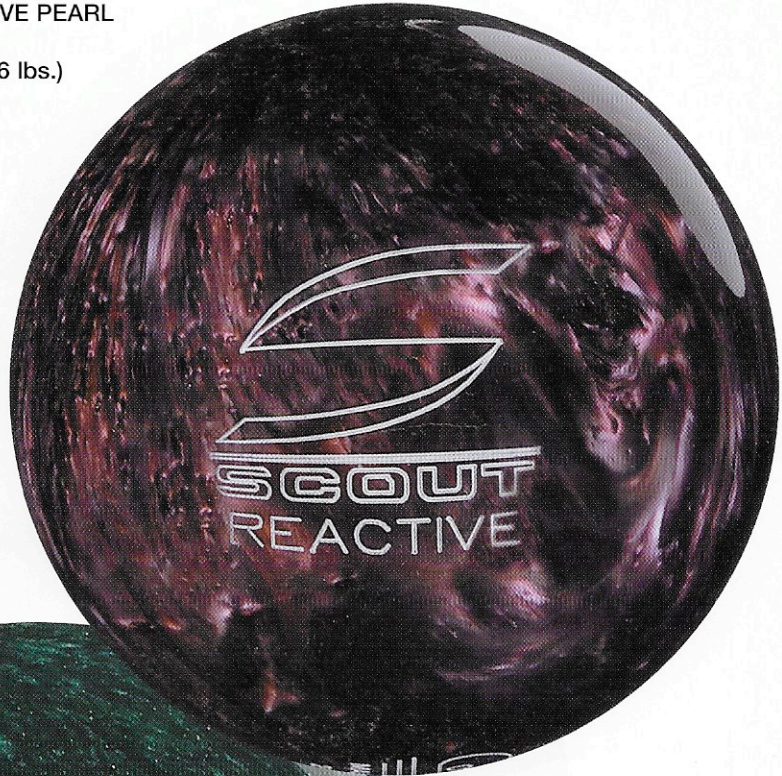
Columbia bowls the world over.®

3-PIECE

SCOUT™ REACTIVE PEARL
Black/Red Pearl
#N33-48-XX (10-16 lbs.)



10-16 lbs.



SCOUT™ REACTIVE PEARL
Jade Pearl
#N33-15-XX (10-16 lbs.)



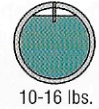
10-16 lbs.



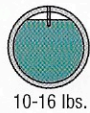
3-PIECE



SCOUT™ PEARL
Ruby Red Pearl
#N44-48-XX (10-16 lbs.)



SCOUT™
Black
#N44-02-XX (10-16 lbs.)



TECHNICAL DATA

BALL	COLORS	COVERSTOCK	CORE	RG 16#	DIFF.	WEIGHTS
Scout™/R Particle	Burgundy/Blue Neon Red Logo	TEC™ coverstock incorporating reactive cover with an enhanced lane-gripping additive	10-16 lbs.: Round core with pancake weight block and high-density offset internal puck	2.631	0.030	10-16
Scout™ Reactive Pearl	Blue/Gold Pearl Silver Sparkle Logo Jade Pearl Neon Yellow Logo Black/Red Pearl Silver Logo Red/Violet Pearl Hot Pink Logo	Pearlized Multi-Color Super-Flex™ Reactive Urethane by BASF®	10-16 lbs.: Round core with pancake weight block and high-density offset internal puck	2.631	0.030	10-16
Scout™	Ruby Red Pearl Neon Yellow Logo Black Neon Red Logo	Pearlized High-Friction Non-Reactive Urethane High-Friction, Non-Reactive Urethane	10-16 lbs.: Round core with pancake weight block	2.654	0.010	10-16



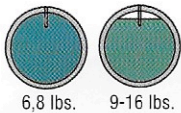
Columbia bowls the world over.®

POLYESTER

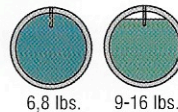
WHITE DOT®

A living legend! A piece of work. This very wise and lane-smart ace knows the ins and outs of the game. Hard-core players wouldn't be without one. And with even more cheeky colors, White Dot remains the rage with the swinging set. A prized collectable.

NEW COLOR!
White Dot®
Gold/Purple/Red Pearl
#N31-65-XX
(6, 8, 9-16 lbs.)

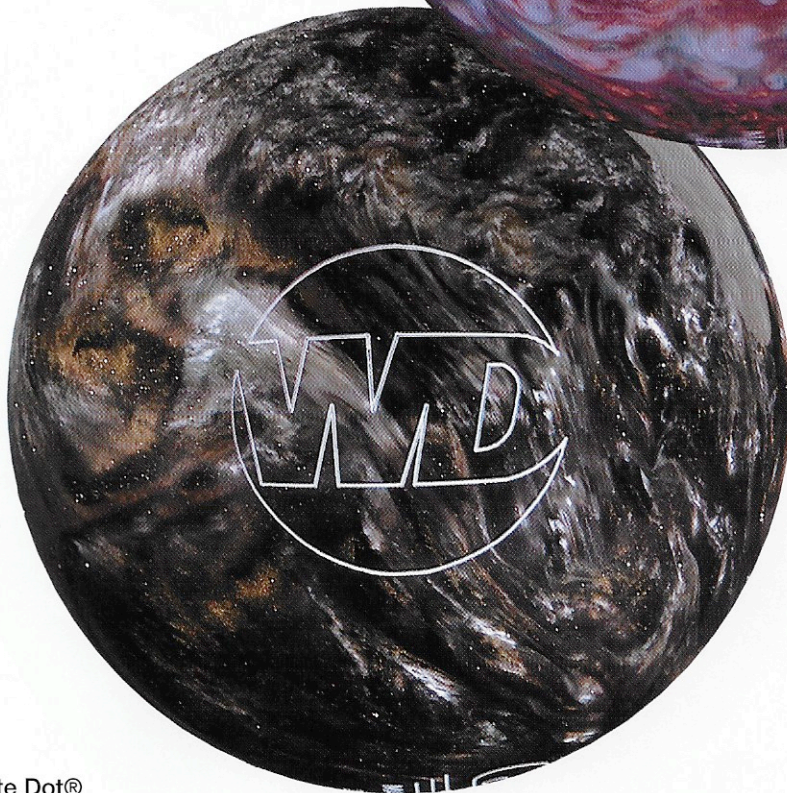
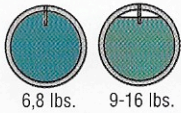


NEW COLOR!
White Dot®
Rose/Green/Blue (Glow)
#N31-66-XX
(6, 8, 9-16 lbs.)

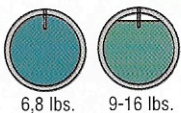


POLYESTER

NEW COLOR!
White Dot®
Ruby/Teal/Ice (Glow)
#N31-67-XX
(6, 8, 9-16 lbs.)



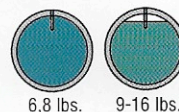
White Dot®
Black/Silver/Caramel Pearl
#N31-05-XX
(6, 8, 9-16 lbs.)



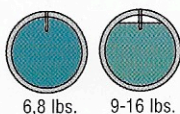
Columbia bowls the world over.®

POLYESTER

White Dot®
Blue Pearl
#N31-10-XX
(6, 8, 9-16 lbs.)



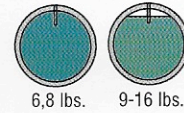
White Dot®
Blue/Green Pearl
#N31-15-XX
(6, 8, 9-16 lbs.)



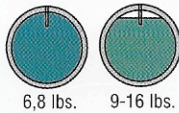
POLYESTER



White Dot®
Purple Sparkle
#N31-51-XX
(6, 8, 9-16 lbs.)



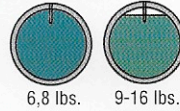
White Dot®
Patriot Swirl (Glow)
#N31-60-XX
(6, 8, 9-16 lbs.)



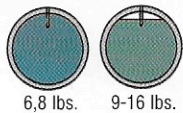
POLYESTER



White Dot®
Fuchsia/Blue/Black (Glow)
#N31-63-XX
(6, 8, 9-16 lbs.)

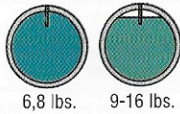


White Dot®
Purple/Green/White Sparkle Pearl
#N31-62-XX
(6, 8, 9-16 lbs.)



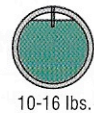
POLYESTER

White Dot®
Red/Orange/Black (Glow)
#N31-64-XX
(6, 8, 9-16 lbs.)



BLUE DOT®
Blue Dot keeps up its competitive pace. It's especially impressive as its high-tensile polyester cover powers its way down the driest lanes. You can always rely on this old friend to deliver a crowd-pleasing performance. Blue Dot still hits its mark for the win.

Blue Dot®
Silver
#308-42-XX (10-16 lbs.)



TECHNICAL DATA

BALL	COLORS	COVERSTOCK	CORE	RG 16#	DIFF.	WEIGHTS
Blue Dot®	Silver White Logo	Hard Polyester	10-16 lbs.: Round core with pancake weight block			10-16
White Dot®	Gold/Purple/Red Pearl Gold Sparkle Logo Rose/Green/Blue (Glow) White Logo Ruby/Teal/Ice (Glow) Neon Yellow Logo Patriot Swirl (Glow) White Logo Black/Silver/Caramel Pearl White Logo Blue Pearl White Logo Blue/Green Pearl Neon Yellow Logo Purple Sparkle Neon Red Logo Purple/Green/White Sparkle Pearl White Logo Fuchsia/Blue/Black (Glow) Silver Sparkle Logo Red/Orange/Black (Glow) Neon Red Logo	Medium Hard Polyester	9-16 lbs.: Round core with pancake weight block 6, 8 lbs.: Foam urethane	2.716	0.019	6.8, 9-16



TECHNICAL DATA

BALL	COLORS	COVERSTOCK	CORE	FINISH	RG 16#	DIFF.	WEIGHTS	ITEM NUMBER
	Throttle™ Crimson/Purple/Bronze Yellow Logo	MuscleGT™	14-16 lbs.: Cam Shaft™ core with triple flip blocks 12-13 lbs.: Inverted bulb shape/integral core	smooth (1200 grit)	2.519	0.057	12-16	#Y96-48-XX
	Throttle-R™ Copper/Gold Pearl Silver Sparkle Logo	Pearlized Accelerator™	14-16 lbs.: Cam Shaft™ core with triple flip blocks 12-13 lbs.: Inverted bulb shape/integral core	Polished	2.519	0.057	12-16	#Y94-02-XX
	ICON™ Sky/Purple/Brick Neon Yellow/Green Logo	Muscle™	14-16 lbs.: Dense polymer core with dense energy flip block 12-13 lbs.: Inverted bulb shape/integral core	Compound	2.544	0.038	12-16	#W83-48-XX
	ICON²™ Red/Purple/Blue White Logo	Muscle™	14-16 lbs.: Medium Rg core with bottom flip block 12-13 lbs.: Inverted bulb shape/integral core	Compound	2.530	0.036	12-16	#Y14-48-XX
	ICON³™ Purple/Red/Orange Gold Sparkle Logo	MusclePlus™	14-16 lbs.: Dense polymer core with dense energy flip block 12-13 lbs.: Inverted bulb shape/integral core	Smooth	2.528	0.040	12-16	#Y31-48-XX
	Messenger™ Ti Red/Blue Neon Yellow Logo	Multi-Color Super-Flex™ Reactive Urethane by BASF®	14-16 lbs.: Core-in-a-core technology with enlarged flip blocks with fired, undrillable Titanium Ceramic core 12-13 lbs.: Inverted bulb shape/integral core with Titanium satellite	Polished	2.527	0.043	12-16	#M88-48-XX
	Messenger™ Ti Pearl Black/Gold Pearl Peach Logo	Pearlized Multi-Color Super-Flex™ Reactive Urethane by BASF	14-16 lbs.: Core-in-a-core technology with enlarged flip blocks with fired, undrillable Titanium Ceramic core 12-13 lbs.: Inverted bulb shape/integral core with Titanium satellite	Polished	2.527	0.043	12-16	#N96-02-XX
	Messenger™ Ti Pearl B/S/P Blue/Silver/Purple Pearl Hot Pink Logo	Pearlized Multi-Color Super-Flex™ Reactive Urethane by BASF	14-16 lbs.: Core-in-a-core technology with enlarged flip blocks with fired, undrillable Titanium Ceramic core 12-13 lbs.: Inverted bulb shape/integral core with Titanium satellite	Polished	2.509	0.050	12-16	#W41-02-XX
	Messenger™ Black Black Neon Green Logo	Flexathane™ urethane with low percent of reactive blend	14-16 lbs.: Inverted bulb shaped core with flip block in stabilizer core 12-13 lbs.: Inverted bulb shape/integral core 10-11 lbs.: Round core with pancake weight block	Sheen (600 Grit)	2.525	0.047	10-16	#V59-02-XX
	Jekyll™ Burgundy/Purple Pearl Neon Red Logo	Pearlized Multi-Color Super-Flex™ Reactive Urethane by BASF	12-16 lbs.: High density polymer core in stabilizer core with flip block 10-11 lbs.: Round core with pancake weight block	Polished	2.490	0.045	10-16	#Y52-48-XX
	Hyde™ Sky/Navy Neon Green Logo	Multi-Color Super-Flex™ Reactive Urethane by BASF®	14-16 lbs.: High density polymer core in stabilizer core 12-13 lbs.: Inverted bulb shape/integral core 10-11 lbs.: Round core with pancake weight block	Sheen (600 Grit)	2.484	0.040	10-16	#Y54-10-XX
	Beast® Master Purple Peach Logo	TEC²™ particle coverstock incor- porating reactive cover with enhanced lane-gripping additive	12-16 lbs.: Inverted bulb shape/integral core 10-11 lbs.: Round core with pancake weight block	Sheen (600 Grit)	2.533	0.020	10-16	#Y64-48-XX (12-16 lbs.) #Y65-48-XX (10-11 lbs.)
	Beast® Pearl with MICA Purple Pearl/Neon Red Logo	Pearlized Flexcel® with MICA	12-16 lbs.: Inverted bulb shape/integral core 10-11 lbs.: Round core with pancake weight block	Polished	2.522	0.018	10-16	#M65-74-XX (12-16 lbs.) #M36-74-XX (10-11 lbs.)
	Scout™ R Particle Burgundy/Blue Neon Red Logo	TEC²™ coverstock incorporating reactive cover with an enhanced lane-gripping additive	10 16 lbs.: Round core with pancake weight block and high- density offset internal puck	Sheen (600 Grit)	2.631	0.030	10-16	#W59-48-XX
	Scout™ Reactive Pearl Blue/Gold Pearl Silver Sparkle Logo Red/Violet Pearl Hot Pink Logo Black/Red Pearl Silver Logo Jade Pearl Neon Yellow Logo	Pearlized Multi-Color Super-Flex™ Reactive Urethane by BASF®	10-16 lbs.: Round core with pancake weight block and high-density offset internal puck	Polished	2.631	0.030	10-16	Blue/Gold Pearl #N33-10-XX Red/Violet Pearl #N33-77-XX Black/Red Pearl #N33-48-XX Jade Pearl #N33-15-XX
	Scout™ Black Neon Red Logo Ruby Red Pearl Neon Yellow Logo	High-Friction, Non-Reactive Urethane Pearlized High-Friction, Non-Reactive Urethane	10-16 lbs.: Round core with pancake weight block	600 Grit Wet Sanded Polished	2.654	0.010	10-16	Black Solid #N44-02-XX Ruby Red Pearl #N44-48-XX
	Blue Dot® Silver White Logo	Hard Polyester	10-16 lbs.: Round core with pancake weight block	Polished			10-16	#308-42-XX
	White Dot® Gold/Purple/Red Pearl Gold Sparkle Logo Rose/Green/Blue (Glow) White Logo Ruby/Teal/Ice (Glow) Neon Yellow Logo Black/Silver/Caramel Pearl White Logo Blue Pearl White Logo Blue/Green Pearl Neon Yellow Logo Purple Sparkle Neon Red Logo Patriot Swirl (Glow) White Logo Fuchsia/Blue/Black (Glow) Silver Sparkle Logo Purple/Green/White Sparkle Pearl White Logo Red/Orange/Black (Glow) Neon Red Logo	Medium Hard Polyester	9-16 lbs.: Round core with pancake weight block 6, 8 lbs.: Foam urethane	Polished	2.716	0.019	6, 8, 9-16	Gold/Purple/Red Pearl N31-65-XX Rose/Green/Blue N31-66-XX Ruby/Teal/Ice N31-67-XX Black/Silver/Caramel Pearl N31-05-XX Blue Pearl N31-10-XX Blue/Green Pearl N31-15-XX Purple Sparkle N31-51-XX Patriot Swirl N31-60-XX Fuchsia/Blue/Black N31-63-XX Purple/Green/White Sparkle Pearl N31-62-XX Red/Orange/Black N31-64-XX

AUTHORIZED DISTRIBUTOR / PRO SHOP



Columbia bowls the world over.®

COLUMBIA 300, INC.
5005 WEST AVE.
SAN ANTONIO, TX 78213
TOLL FREE: 1-800-531-5920
210-344-9211, FAX 210-349-8672
www.columbia300.com