

**BALL
CATALOG
2002/03**



COLUMBIA 300



COLUMBIA 300

Columbia bowls the world over.®

HIGH PERFORMANCE



NEW! REACTION™ REV™

Heading up our Reaction™ line is the ball that performs at the WOW! level every time. Let it go and it revs up for a heart-pounding hairpin turn at the finish line. Behind that too-cool, but menacing TEC²™ particle coverstock is pure genius. It delivers the reaction you need to hammer the competition. A thoroughbred that lets it rip on the lane.

NEW! REACTION™ REV™
Blue/Black/Orange Multi
#W53-10-XX (12-16 lbs.)

Hook Rating 26



Light Oil

Medium Oil

Heavy Oil



12-13 lbs.



14-16 lbs.

TECHNICAL DATA

BALL	COLORS	COVERSTOCK	CORE	RG 16#	DIFF.	WEIGHTS
Reaction™ Rev™	Blue/Black/Orange Multi Gold/Silver Sparkle Logo	TEC ² ™ coverstock incorporating reactive cover with enhanced lane-gripping additive	14-16 lbs.: Low Rg core body with dense energy flip blocks 12-13 lbs.: Inverted bulb shape/integral core	2.484	0.053	12-16
Reaction™ Arc™	Onyx Black Gold Sparkle Logo	MegaTEC™ coverstock	14-16 lbs.: Dense elongated core body with dual low density arc blocks 12-13 lbs.: Inverted bulb shape/integral core	2.524	0.045	12-16
Reaction™ Rip™	Emerald Pearl Silver Sparkle Logo	Enhanced version of our pearlized Super-Flex™ reactive coverstock	14-16 lbs.: Bullet core with dual flip blocks 12-13 lbs.: Inverted bulb shape/integral core	2.514	0.058	12-16
Reaction™ Roll™	Sapphire Blue Orange Logo	MegaTEC™ coverstock	14-16 lbs.: Low Rg core body with medium dense energy flip blocks 12-13 lbs.: Inverted bulb shape/integral core	2.490	0.043	12-16
Reaction™ Ricochet™	Midnight Pearl Gold Logo	Pearlized TEC ² ™ coverstock plus Holo-Flex™	14-16 lbs.: Low Rg core body with dense energy flip blocks 12-13 lbs.: Inverted bulb shape/integral core	2.498	0.041	12-16
Sport Ball™	Maroon Neon Yellow Logo	Polished TEC ² ™ with reduced Particle Loading	12-16 lbs.: Medium Rg core with bottom flip block	2.544	0.037	12-16

1

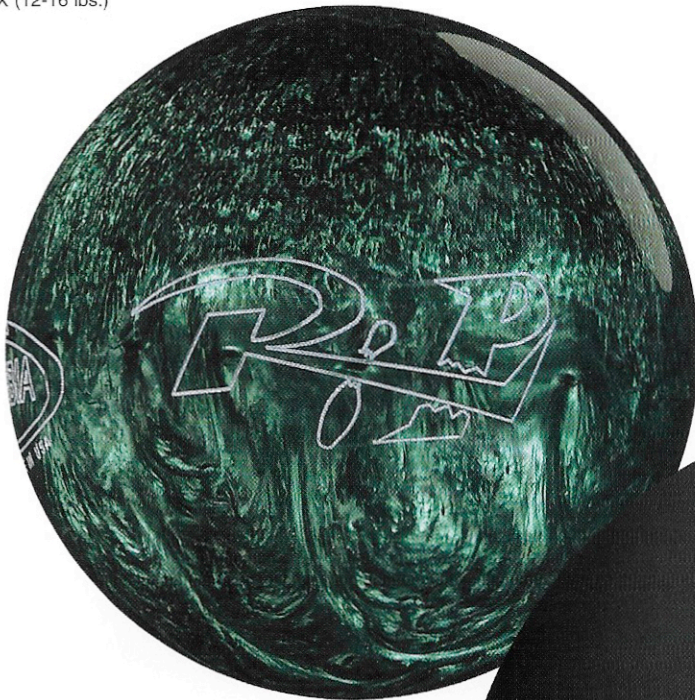


COLUMBIA 300



HIGH PERFORMANCE

REACTION™ RIP™
Emerald Pearl
#W11-15-XX (12-16 lbs.)



REACTION™ RIP™

Our Reaction™ Rip™ is into excess. More length through the front section and a riproarin' performance on the backend. We've encased its core with an enhanced version of our pearled Super-Flex™ coverstock. There's more friction between the ball and the dry lane surface, so it lets loose with a stunning sharp turn on the backend. A lightning bolt in Emerald Pearl!

Hook Rating 24



12-13 lbs.



14-16 lbs.

REACTION™ ARC™

Core design will never be the same. We've created the Arc Block revolution, which goes to the core of the Reaction™ Arc™. Our patented low density Arc Blocks sandwich in a high density core, stabilize it and create a strong ARC in the mid-lane and a continuous backend motion. The result is a jaw-dropping ball motion with killer pin action. The Reaction™ family scores again!



REACTION™ ARC™
Onyx Black
#W22-02-XX (12-16 lbs.)

Hook Rating 31



12-13 lbs.



14-16 lbs.

HIGH PERFORMANCE



REACTION™ ROLL™

Our Reaction™ Roll™ knows what to do with the challenge of heavy oil in the front and midlane. Its MegaTEC™, which is our TEC™ coverstock kicked up a notch, produces a strong curve and continuous backend reaction. Shows you where a couple of busy years in R&D gets you. Pairs up perfectly with our Reaction™ Ricochet™

REACTION™ ROLL™
Sapphire Blue
#V66-30-XX (12-16 lbs.)

Hook Rating 30



12-13 lbs.



14-16 lbs.



REACTION™ RICOCHET™
Midnight Pearl
#V63-02-XX (12-16 lbs.)

REACTION™ RICOCHET™

Those same two wild years in R&D produced our Reaction™ Ricochet™ as a side-by-side partner for Reaction™ Roll™. This ball was born to take on most common lane conditions with a backend reaction to the max. Its pearlized coverstock is not your ordinary reactive type. It's armed with an explosive combination of TEC²™ and Holo-Flex™ particles.



12-13 lbs.



14-16 lbs.

Hook Rating 25.5



3



COLUMBIA 300

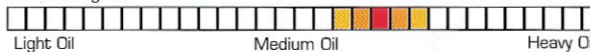


HIGH PERFORMANCE

SPORT BALL™

Let the Sport League begin! Get a jump on the field with our Sport Ball™. The ball you need to shine in the new Sport Condition. When more oil is applied on the outside boards to reduce your entry angle, the Sport Ball™ doesn't flinch. The coverstock, a variation on our TEC™ particle shell, lets you play more on the outside, increasing your entry angle. With zero effort, you'll clear the front part of the lane and power in with a smooth, arcing backend. Attack!

Hook Rating 20



12-16 lbs.



SPORT BALL™
Maroon
#W06-48-XX (12-16 lbs.)

MID PERFORMANCE



GAME™

Game™ puts a dizzying spin on performance. And a smile on your budget. With the Game™, you can take on heavy oil conditions. No problem. It grips to the max with a major dose of particles in our original TEC™ coverstock. And its double cylinder core sets it on fire with pocket power. You may even amaze yourself with your level of game. And the change you keep in your pocket.

GAME™
Black
#V43-02-XX (12-16 lbs.)

Hook Rating 24



Light Oil

Medium Oil

Heavy Oil



12-13 lbs. 14-16 lbs.



GAME™ PEARL
Red/Blue Multi Pearl
#W03-48-XX (12-16 lbs.)

GAME™ PEARL

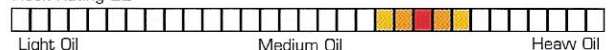
All eyes will be on this beauty as it struts its pearlized stuff. It streaks down the lane to make a strong, continuous arcing backend motion. The center-heavy core and the lighter load of TEC²™ particles give it midlane curve, while the pearlized shell lets it keep hooking on the backend. Pair it with its Game™ partner and watch the electricity sizzle.



12-13 lbs.

14-16 lbs.

Hook Rating 22



Light Oil

Medium Oil

Heavy Oil

5



COLUMBIA 300



MID PERFORMANCE

MESSENGER™ TITANIUM
Red/Blue
#M88-48-XX (12-16 lbs.)



MESSENGER™ TITANIUM PEARL
Black/Gold Pearl
#N96-02-XX (12-16 lbs.)



MESSENGER™ TITANIUM

The war horse just gets grittier. With core technology that was way ahead of its time, it's still got the stuff. More rotation and hook potential. And it's got a strong arc at the break point, with enough energy left for a vigorous backend reaction. Chalk it up to the Super-Flex™ reactive coverstock. If you want to throw a name around to impress folks, this is the one to throw.

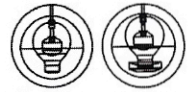
Hook Rating 17



Light Oil

Medium Oil

Heavy Oil



12-13 lbs. 14-16 lbs.

NEW COLOR!
MESSENGER™ TITANIUM PEARL
Blue/Silver/Purple Pearl
#W41-02-XX (12-16 lbs.)

NEW! MESSENGER™ TITANIUM PEARL

A beautiful transformation without changing the value! This Messenger™ Ti Pearl performs and looks better than ever. Concentrated mass at the center generates more rotation off your hand for greater hook potential. The aggressive pearlized Super-Flex™ shell results in skid through the heads and a sharp turn on the backend. And with its stunning new color mix, the crowds will take notice.

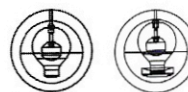
Hook Rating 18.5



Light Oil

Medium Oil

Heavy Oil



12-13 lbs. 14-16 lbs.

MESSENGER™ TITANIUM PEARL

Our Messenger™ Ti Pearl is different. It's turning heads and turning in stellar performances. You'll know you've got power in your hands. Featuring an aggressive Super-Flex™ cover for extraordinary hook. You'll marvel as it goes for a strong midlane stretch, then effortlessly surges on the backend for a strong entry angle. It'll pound the pocket!

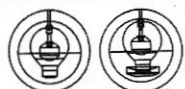
Hook Rating 18



Light Oil

Medium Oil

Heavy Oil



12-13 lbs. 14-16 lbs.

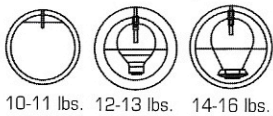
MID PERFORMANCE



MESSENGER™ PEARL

It's always nice to have an old friend on your side. When you team up with Messenger™ Pearl, you know you can relax. With the pearlized Super-Flex™ coverstock advantage, it's primed to win. With a flawlessly controlled break point for when the lane begins to dry up.

MESSENGER™ PEARL
Cherry Pearl
#V13-48-XX (10-16 lbs.)

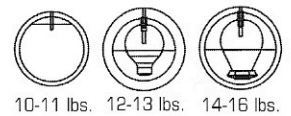


MESSENGER™ BLACK
Black
#V59-02-XX (10-16 lbs.)



MESSENGER™ BLACK

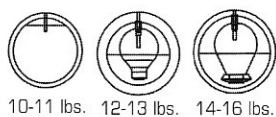
When you want to make a statement, classic black comes on strong with slick sophistication. But its strong suit is the Flexathane™ urethane coverstock that gives you complete control on wet/dry lanes. And its speed is dazzling, as it zips down the lane with a perfect arcing motion. With its clean looks, Messenger™ Black is too cool. In competition, watch out.



MESSENGER™

For a blue-ribbon performance, our trusty Messenger™ comes through every time. The high-powered Super-Flex™ coverstock endows this super ball with a controllable backend arc. And it takes on the lanes with a fierce grip. A legend in its own time

MESSENGER™
Nautical Blue
#V20-10-XX (10-16 lbs.)





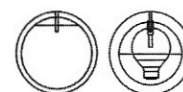
MID PERFORMANCE



BEAST® PEARL with MICA

This Beast® obeys its master. But pity the competition. With flashing fangs, it goes for the throat, energized with Pearalized Flexcel® with MICA for a little less bite than our aggressive Super-Flex™ shell. Beneath the fierce warrior is a sweet breed that blends performance, good looks and a budget-loving price

Hook Rating 13



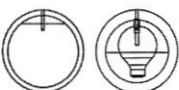
10-11 lbs. 12-16 lbs.

BEAST® PEARL with MICA

Purple Pearl
#M65-74-XX (12-16 lbs.)
#M36-74-XX (10-11 lbs.)

BEAST® with MICA

The Beast® never relaxes. With the competition as its prey, it knows its moves. It's all muscle with its small flaring bulb-shaped core and Flexcel® coverstock. The Beast® fires up and stays on course.



10-11 lbs. 12-16 lbs.

Hook Rating 14



BEAST® with MICA

Purple
#M64-51-XX (12-16 lbs.)
#M34-51-XX (10-11 lbs.)

TECHNICAL DATA

BALL	COLORS	COVERSTOCK	CORE	RG 16#	DIFF.	WEIGHTS
Game™	Black Neon Red Logo	TEC™ coverstock incorporating reactive cover with suspended particles	14-16 lbs.: Double cylinder core in stabilizer core 12-13 lbs.: Inverted bulb shape/integral core	2.519	0.047	12-16
Game™ Pearl	Red/Blue Multi Pearl Silver Sparkle Logo	Pearalized TEC™ incorporating reactive cover with an enhanced lane-gripping additive	14-16 lbs.: Dense polymer core with a dense energy flip block 12-13 lbs.: Inverted bulb shape/integral core	2.480	0.051	12-16
Messenger™ Titanium Pearl	Black/Gold Pearl Peach Logo	Pearalized Multi-Color Super-Flex™ Reactive Urethane by BASF®	14-16 lbs.: Core-in-a-core technology with enlarged flip blocks with fired, undrillable Titanium Ceramic core 12-13 lbs.: Inverted bulb shape/integral core with Titanium satellite	2.527	0.043	12-16
Messenger™ Titanium	Blue/Silver/Purple Pearl Hot Pink Logo	Pearalized Multi-Color Super-Flex™ Reactive Urethane by BASF®	14-16 lbs.: Core-in-a-core technology with enlarged flip blocks with fired, undrillable Titanium Ceramic core 12-13 lbs.: Inverted bulb shape/integral core with Titanium satellite	2.509	0.050	12-16
Messenger™ Titanium	Red/Blue Neon Yellow Logo	Multi-Color Super-Flex™ Reactive Urethane by BASF®	14-16 lbs.: Core-in-a-core technology with enlarged flip blocks with fired, undrillable Titanium Ceramic core 12-13 lbs.: Inverted bulb shape/integral core with Titanium satellite	2.527	0.043	12-16
Messenger™	Nautical Blue Lt. Gray logo	Super-Flex™ Reactive Urethane by BASF®	14-16 lbs.: Inverted bulb shaped core with flip block in stabilizer core 12-13 lbs.: Inverted bulb shape/integral core 10-11 lbs.: Round core with pancake weight block	2.525	0.047	10-16
Messenger™ Pearl	Cherry Pearl Peach Logo	Pearalized Super-Flex™ Reactive Urethane by BASF® with Holo-Flex™	14-16 lbs.: Inverted bulb shaped core with flip block in stabilizer core 12-13 lbs.: Inverted bulb shape/integral core 10-11 lbs.: Round core with pancake weight block	2.525	0.047	10-16
Messenger™ Black	Black Neon Green Logo	Flexathane™ urethane with low percent of reactive blend	14-16 lbs.: Inverted bulb shaped core with flip block in stabilizer core 12-13 lbs.: Inverted bulb shape/integral core 10-11 lbs.: Round core with pancake weight block	2.525	0.047	10-16
Beast® with MICA	Purple Neon Red Logo	Flexcel® with MICA	12-16 lbs.: Inverted bulb shape/integral core 10-11 lbs.: Round core with pancake weight block	2.522	0.018	10-16
Beast® Pearl with MICA	Purple Pearl Neon Red Logo	Pearalized Flexcel® with MICA	12-16 lbs.: Inverted bulb shape/integral core 10-11 lbs.: Round core with pancake weight block	2.522	0.018	10-16

FLIPSIDE



NEW! WILD™
FLIPSIDE™ BY COLUMBIA 300®
 Red/Purple/Gold Pearl
 #W63-48-XX (10-16 lbs.)

NEW! WILD™
FLIPSIDE™ BY COLUMBIA 300®

Get ready for a wild ride! Our new super star mauls the competition, flaunting its saucy colors all the way. No shame. Imagine a controllable break point, continuous backend and flare for more hook. With its 3-piece core with offset puck and SUPER-FLEX™ reactive urethane cover, this wild thing will give you a lot of mileage. Definitely on the Flipside™ of ordinary.



10-16 lbs.

Hook Rating 13



Light Oil

Medium Oil

Heavy Oil

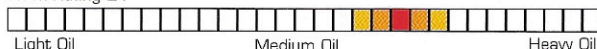


NEW! WICKED™
FLIPSIDE™ BY COLUMBIA 300®
 Oyster/Blue
 #W61-10-XX (12-16 lbs.)

NEW! WICKED™
FLIPSIDE™ BY COLUMBIA 300®

Got the need for speed? With a mind of its own, our new down-dirty ball insists on going to the end of the oil, then turning towards the pocket. Its low Rg core and medium high differential get things rolling. 5" of flare gives it extra friction at the breakpoint. The wicked, aggressive streak comes from its multi-color, solid SUPER-FLEX™ reactive shell. Think length and flip. Don't try this at home.

Hook Rating 21



Light Oil

Medium Oil

Heavy Oil



12-13 lbs.



14-16 lbs.



3-PIECE

NEW! SCOUT™/R PARTICLE
 Burgundy/Blue
 #W59-48-XX (10-16 lbs.)

NEW! SCOUT™/R PARTICLE

If you liked our original Scout™ Reactive, you'll love this particle twist. We kept the classic Scout Reactive core with our TEC²™ coverstock technology. So it starts hooking before the oil ends. Perfect for medium oil conditions.



Hook Rating 16



10-16 lbs.

TECHNICAL DATA

BALL	COLORS	COVERSTOCK	CORE	RG-16#	DIFF.	WEIGHTS
Wild™ Flipside™ by Columbia 300®	Red/Purple/Gold Pearl Hot Pink/Neon Yellow Logo	Super-Flex™ Reactive Urethane by BASF®	10-16 lbs.: Round core with pancake weight block and high-density offset internal puck	2.631	0.030	10-16
Wicked™ Flipside™ by Columbia 300®	Oyster/Blue Hot Pink Logo	Super-Flex™ Reactive Urethane by BASF®	14-16 lbs.: Dense polymer core with a dense energy flip block 12-14 lbs.: Inverted bulb shape/integral core	2.497	0.049	12-16
Scout™/R Particle	Burgundy/Blue Neon Red Logo	TEC²™ coverstock incorporat- ing reactive cover with an enhanced lane-gripping additive	10-16 lbs.: Round core with pancake weight block and high-density offset internal puck	2.631	0.030	10-16
Scout™ Reactive Pearl	Jade Pearl Neon Yellow Logo Black/Red Pearl Silver Logo Red/Violet Pearl Hot Pink Logo	Pearlized Super-Flex™ Reactive Urethane by BASF®	10-16 lbs.: Round core with pancake weight block and high-density offset internal puck	2.631	0.030	10-16
Scout™	Black Neon Red Logo Ruby Red Pearl Neon Yellow Logo	High-Friction, Non-Reactive Urethane Pearlized High-Friction, Non-Reactive Urethane	10-16 lbs.: Round core with pancake weight block	2.654	0.010	10-16

3-PIECE



SCOUT™ REACTIVE PEARL

A kaleidoscope of color! The Scout™ Reactive spins down its path, leaving the competition helpless with its controllable break point and continuous backend. It's constructed with a breakthrough 3-piece core with offset puck, which creates flare for more hook. And it's finished with our SUPER-FLEX™ reactive urethane cover. This is one gem of a ball.

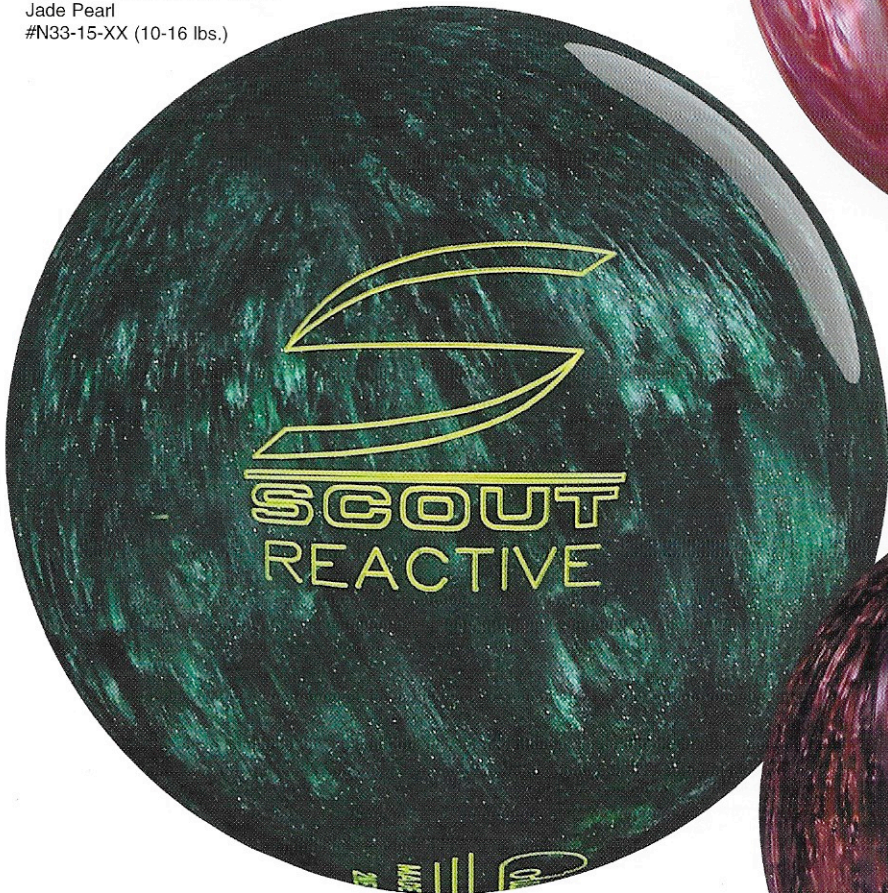
Hook Rating 13



10-16 lbs.

SCOUT™ REACTIVE PEARL

Jade Pearl
#N33-15-XX (10-16 lbs.)



SCOUT™ REACTIVE PEARL
Red/Violet Pearl
#N33-77-XX (10-16 lbs.)



SCOUT™ REACTIVE PEARL
Black/Red Pearl
#N33-48-XX (10-16 lbs.)





3-PIECE

SCOUT™ PEARL
Ruby Red Pearl
#N44-48-XX (10-16 lbs.)



SCOUT™

The non-reactive cousin of the Scout™ family is our best in 3-piece, non-reactive urethane balls. For control, durability and outstanding performance on wet/dry conditions, look no further. Dependable, spunky performance has put it on the map. No secret any more.

Hook Rating 11



Light Oil

Medium Oil

Heavy Oil



10-16 lbs.

SCOUT™
Black
#N44-02-XX (10-16 lbs.)



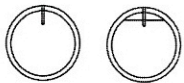
POLYESTER



WHITE DOT®

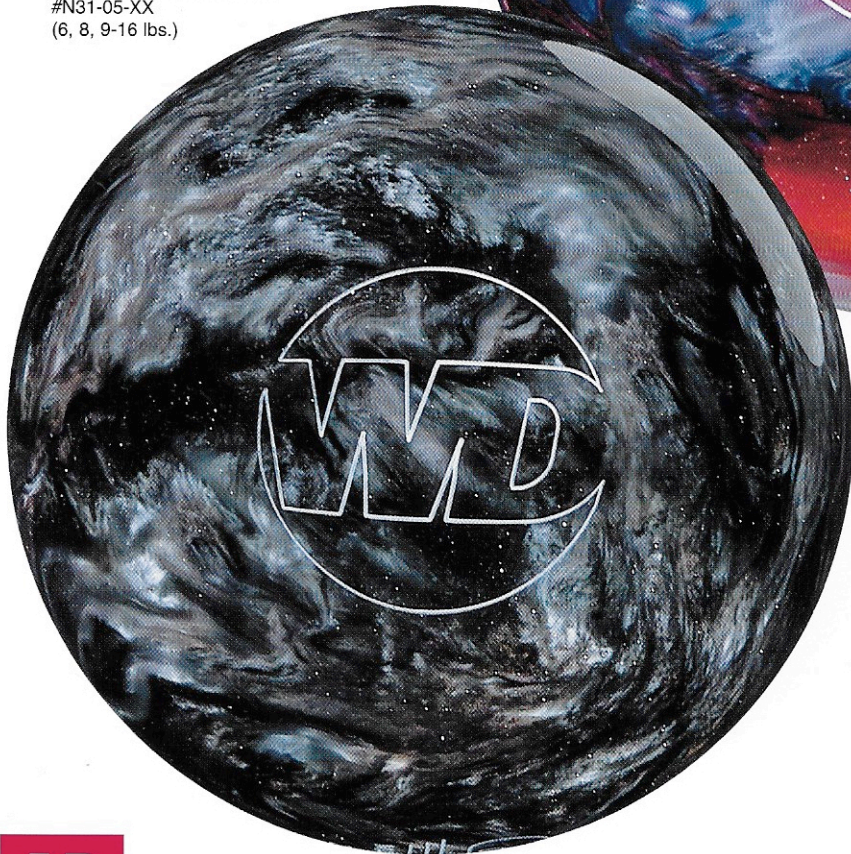
If the White Dot® could talk! Imagine the tales it could tell. With 40-plus years under its belt, our White Dot® knows all the secrets and puts them to good use on the lanes. And it still has spunk. The new glitzy, hip colors create a frenzy with the young crowd.

White Dot®
Patriot Swirl (Glow)
#N31-61-XX
(6, 8, 9-16 lbs.)



6, 8 & 9 lbs. 10-16 lbs.

White Dot®
Black/Silver/Caramel Pearl
#N31-05-XX
(6, 8, 9-16 lbs.)





POLYESTER

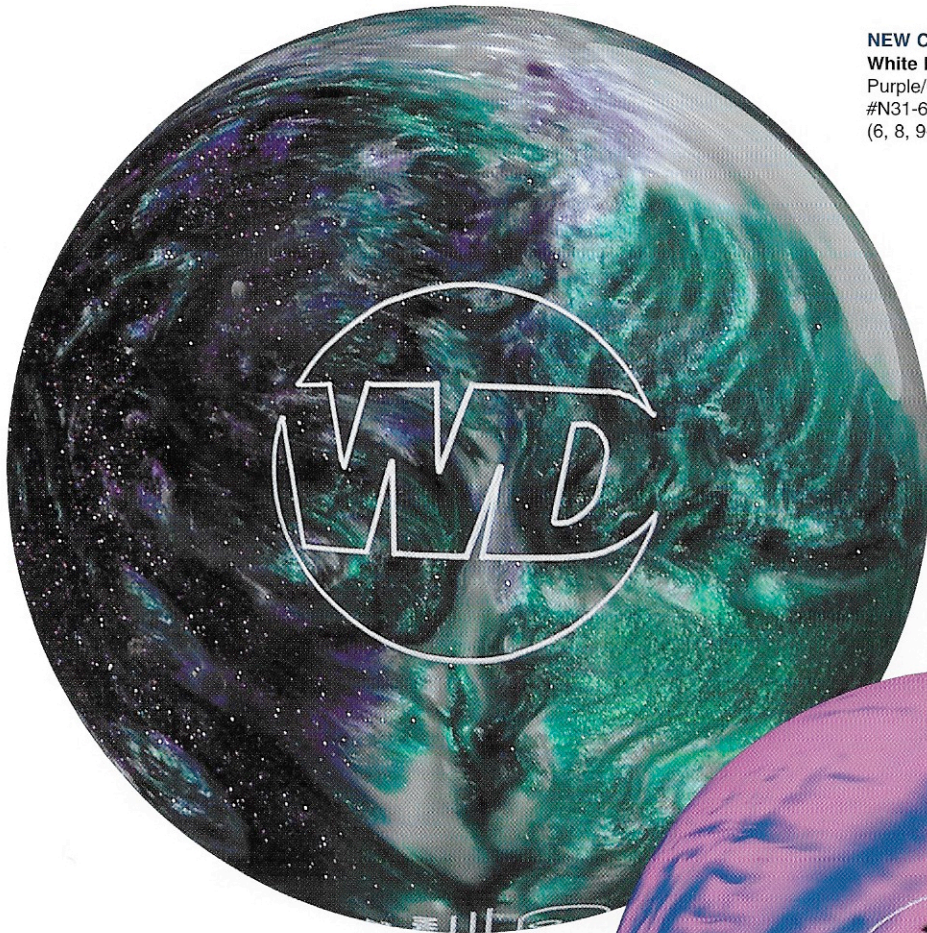


White Dot®
Teal/Violet/Red Pearl (Glow)
#N31-20-XX
(6, 8, 9-16 lbs.)

NEW COLOR!
White Dot®
Red/Orange/Black (Glow)
#N31-64-XX
(6, 8, 9-16 lbs.)



POLYESTER



NEW COLOR!
White Dot®
Purple/Green/White Sparkle Pearl
#N31-62-XX
(6, 8, 9-16 lbs.)



NEW COLOR!
White Dot®
Fuchsia/Blue/Black (Glow)
#N31-63-XX
(6, 8, 9-16 lbs.)



POLYESTER

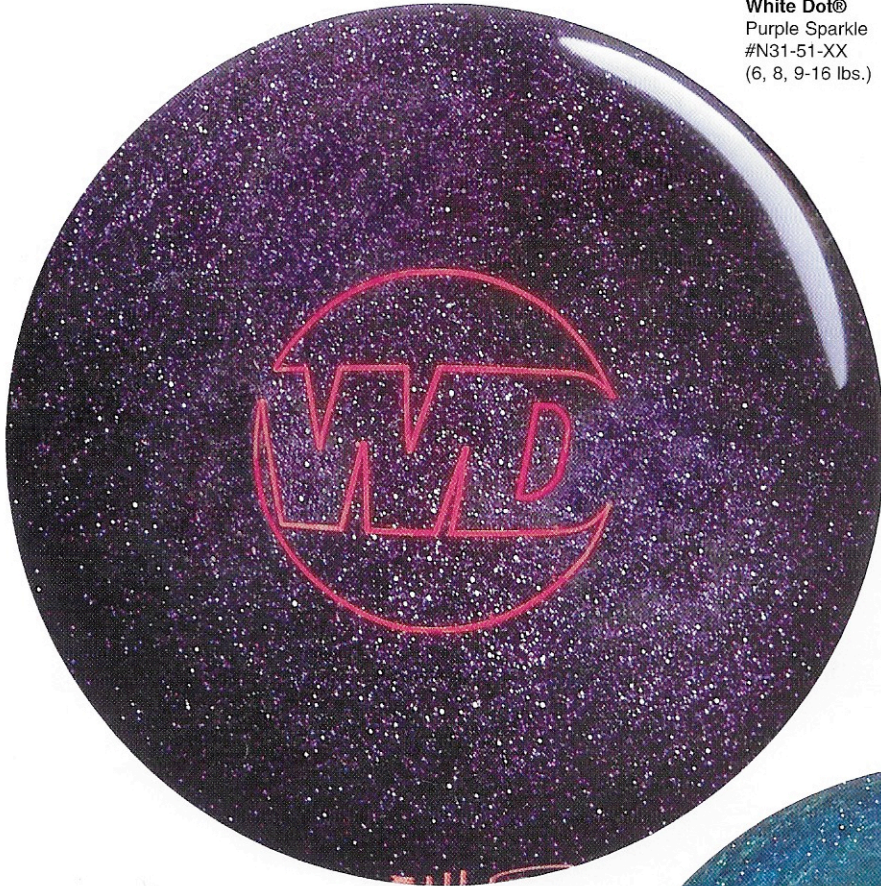
White Dot®
Blue Pearl
#N31-10-XX
(6, 8, 9-16 lbs.)



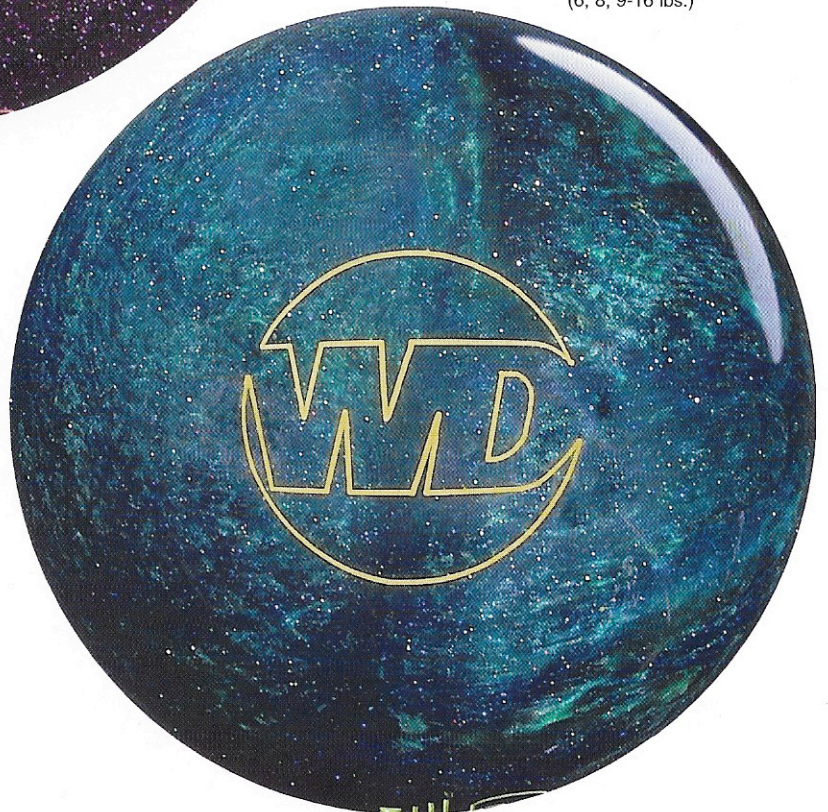
White Dot®
Red/Yellow/Green (Glow)
#N31-48-XX
(6, 8, 9-16 lbs.)



POLYESTER



White Dot®
Purple Sparkle
#N31-51-XX
(6, 8, 9-16 lbs.)



White Dot®
Blue/Green Pearl
#N31-15-XX
(6, 8, 9-16 lbs.)



POLYESTER

BLUE DOT®

The blue-ribbon mainstay. Blue Dot® lives up to its reputation as a trusty player. Even on the driest lanes, it gives streamlined performances thanks to its high-tensile polyester cover. Blue Dot®, the ball that's always game. It knows its role and goes to work.



10-16 lbs.

Blue Dot®
Silver
#308-42-XX (10-16 lbs.)

TECHNICAL DATA

BALL	COLORS	COVERSTOCK	CORE	RG 16#	DIFF.	WEIGHTS
Blue Dot®	Silver White Logo	Hard Polyester	10-16 lbs.: Round core with pancake weight block			10-16
White Dot®	Red/Orange/Black (Glow) Neon Red Logo Purple/Green/White Sparkle Pearl White Logo Black/Silver/Caramel Pearl White Logo Blue Pearl White Logo Blue/Green Pearl Neon Yellow Logo Teal/Violet/Red Pearl (Glow) Hot Pink Logo Red/Yellow/Green (Glow) Neon Yellow Logo Purple Sparkle Neon Red Logo Patriot Swirl (Glow) White Logo Fuchsia/Blue/Black (Glow) Silver Sparkle Logo	Medium Hard Polyester	10-16 lbs.: Round core with pancake weight block 6, 8 & 9 lbs.: Foam urethane	2.716	0.019	6.8, 9-16

FEATURES



BALL	COLORS	COVERSTOCK	CORE	FINISH	RG 16#	DIFF.	WEIGHTS	HOOK	ITEM NUMBER
	Blue/Black/Orange Gold/Silver Sparkle Logo	TEC ² ™ coverstock incorporating reactive cover with an enhanced lane-gripping additive	14-16 lbs.: Low Rg core body with dense energy flip blocks 12-13 lbs.: Inverted bulb shape/integral core	Polished	2.484	0.053	12-16	26	#W53-10-XX
	Onyx Black Gold Sparkle Logo	MegaTEC™ coverstock	14-16 lbs.: Dense elongated core body with dual low density arc blocks 12-13 lbs.: Inverted bulb shape/integral core	Fine (1200 Grit)	2.524	0.045	12-16	31	#W22-02-XX
	Emerald Pearl Silver Sparkle Logo	Enhanced version of our pearlized Super-Flex™ reactive coverstock	14-16 lbs.: Bullet core with dual flip blocks 12-13 lbs.: Inverted bulb shape/integral core	Polished	2.514	0.058	12-16	24	#W11-15-XX
	Sapphire Blue Orange Logo	MegaTEC™ coverstock	14-16 lbs.: Low Rg core body with medium dense energy flip blocks 12-13 lbs.: Inverted bulb shape/integral core	Sheen (600 Grit)	2.490	0.043	12-16	30	#V66-30-XX
	Midnight Pearl Gold Logo	Pearlized TEC ² ™ coverstock plus Holo-Flex™	14-16 lbs.: Low Rg core body with dense energy flip blocks 12-13 lbs.: Inverted bulb shape/integral core	Polished	2.498	0.041	12-16	25.5	#V63-02-XX
	Maroon Neon Yellow Logo	Polished TEC™ with reduced Particle Loading	12-16 lbs.: Medium Rg core with bottom flip block	Polished	2.544	0.037	12-16	20	#W06-48-XX
	Black Neon Red Logo	TEC™ coverstock incorporating reactive cover with suspended particles	14-16 lbs.: Double cylinder core in a stabilizer core 12-13 lbs.: Inverted bulb shape/integral core	Sheen (600 Grit)	2.519	0.047	12-16	24	#V43-02-XX
	Red/Blue Multi Pearl Silver Sparkle Logo	Pearlized TEC ² ™ incorporating reactive cover with an enhanced lane-gripping additive	14-16 lbs.: Dense polymer core with a dense energy flip block 12-13 lbs.: Inverted bulb shape/integral core	Polished	2.480	0.051	12-16	22	#W03-48-XX
	Blue/Silver/Purple Pearl Hot Pink Logo	Pearlized Multi-Color Super-Flex™ Reactive Urethane by BASF	14-16 lbs.: Core-in-a-core technology with enlarged flip blocks with fired, undrillable Titanium Ceramic core 12-13 lbs.: Inverted bulb shape/integral core with Titanium satellite	Polished	2.509	0.050	12-16	18.5	#W41-02-XX
	Black/Gold Pearl Peach Logo	Pearlized Multi-Color Super-Flex™ Reactive Urethane by BASF	14-16 lbs.: Core-in-a-core technology with enlarged flip blocks with fired, undrillable Titanium Ceramic core 12-13 lbs.: Inverted bulb shape/integral core with Titanium satellite	Polished	2.527	0.043	12-16	18	#N96-02-XX
	Red/Blue Neon Yellow Logo	Multi-Color Super-Flex™ Reactive Urethane by BASF	14-16 lbs.: Core-in-a-core technology with enlarged flip blocks with fired, undrillable Titanium Ceramic core 12-13 lbs.: Inverted bulb shape/integral core with Titanium satellite	Polished	2.527	0.043	12-16	17	#M88-48-XX
	Nautical Blue Lt. Gray logo	Super-Flex™ Reactive Urethane by BASF	14-16 lbs.: Inverted bulb shaped core with flip block in stabilizer core 12-13 lbs.: Inverted bulb shape/integral core 10-11 lbs.: Round core with pancake weight block	Sheen (600 Grit)	2.525	0.047	10-16	15	#V20-10-XX
	Cherry Pearl Peach Logo	Pearlized Super-Flex Reactive Urethane by BASF with HoloFlex™	14-16 lbs.: Inverted bulb shaped core with flip block in stabilizer core 12-13 lbs.: Inverted bulb shape/integral core 10-11 lbs.: Round core with pancake weight block	Polished	2.525	0.047	10-16	14	#V13-48-XX
	Black Neon Green Logo	Flexthane™ urethane with low percent of reactive blend	14-16 lbs.: Inverted bulb shaped core with flip block in stabilizer core 12-13 lbs.: Inverted bulb shape/integral core 10-11 lbs.: Round core with pancake weight block	Sheen (600 Grit)	2.525	0.047	10-16	12	#V59-02-XX
	Purple Neon Red Logo	Flexcel® with MICA	12-16 lbs.: Inverted bulb shape/integral core 10-11 lbs.: Round core with pancake weight block	Sheen (600 Grit)	2.522	0.018	10-16	14	#M64-51-XX 12-16# #M34-51-XX 10-11#
	Purple Pearl Neon Red Logo	Pearlized Flexcel® with MICA	12-16 lbs.: Inverted bulb shape/integral core 10-11 lbs.: Round core with pancake weight block	Polished	2.522	0.018	10-16	13	#M65-74-XX 12-16# #M36-74-XX 10-11#
	Red/Purple/Gold Pearl Hot Pink/Neon Yellow Logo	Super-Flex™ Reactive Urethane by BASF	10-16 lbs.: Round core with pancake weight block and high-density offset internal puck	Polished	2.631	0.030	10-16	13	#W63-48-XX
	Oyster/Blue Hot Pink Logo	Super-Flex™ Reactive Urethane by BASF	14-16 lbs.: Dense polymer core with a dense energy flip block 12-13 lbs.: Inverted bulb shape/integral core	Polished	2.497	0.049	12-16	21	#W61-10-XX
	Burgundy/Blue Neon Red Logo	TEC ² ™ coverstock incorporating reactive cover with an enhanced lane-gripping additive	10-16 lbs.: Round core with pancake weight block and high-density offset internal puck	Sheen (600 Grit)	2.631	0.030	10-16	16	#W59-48-XX
	Jade Pearl Neon Yellow Logo Black/Red Pearl Silver Logo Red/Violet Pearl Hot Pink Logo	Pearlized Super-Flex Reactive Urethane by BASF	10-16 lbs.: Round core with pancake weight block and high-density offset internal puck	Polished	2.631	0.030	10-16	13	Jade Pearl #N33-15-XX Black/Red Pearl #N33-48-XX Red/Violet Pearl #N33-77-XX
	Black Neon Red Logo Ruby Red Pearl Neon Yellow Logo	High-Friction, Non-Reactive Urethane Pearlized High-Friction, Non-Reactive Urethane	10-16 lbs.: Round core with pancake weight block	600 Grit Wet Sanded Polished	2.654	0.010	10-16	11	Black Solid #N44-02-XX Ruby Red Pearl #N44-48-XX
	Silver White Logo	Hard Polyester	10-16 lbs.: Round core with pancake weight block	Polished			10-16	5	#308-42-XX
	Black/Silver/Caramel Pearl White Logo Blue Pearl White Logo Blue/Green Pearl Neon Yellow Logo Teal/Violet/Red Pearl Hot Pink Logo (Glow) Red/Yellow/Green Neon Yellow Logo (Glow) Purple Sparkle Neon Red Logo Patriot Swirl White Logo (Glow) Purple/Green/White Sparkle Pearl White Logo Fuchsia/Blue/Black Silver Sparkle Logo (Glow) Red/Orange/Black Neon Red Logo (Glow)	Medium Hard Polyester	10-16 lbs.: Round core with pancake weight block 6, 8 & 9 lbs.: Foam urethane	Polished	2.716	0.019	6, 8, 9-16	8	Black/Silver/Caramel Pearl #N31-05-XX Blue Pearl #N31-10-XX Blue/Green Pearl #N31-15-XX Teal/Violet/Red Pearl #N31-20-XX Red/Yellow/Green Neon Yellow Logo #N31-48-XX Purple Sparkle #N31-51-XX Patriot Swirl #N31-61-XX Purple/Green/White Sparkle Pearl #N31-62-XX Fuchsia/Blue/Black Silver Sparkle Logo #N31-63-XX Red/Orange/Black Neon Red Logo #N31-64-XX



COLUMBIA 300, INC.
5005 WEST AVE.
SAN ANTONIO, TX 78213
TOLL FREE: 1-800-531-5920
210-344-9211, FAX 210-349-8672
www.columbia300.com