



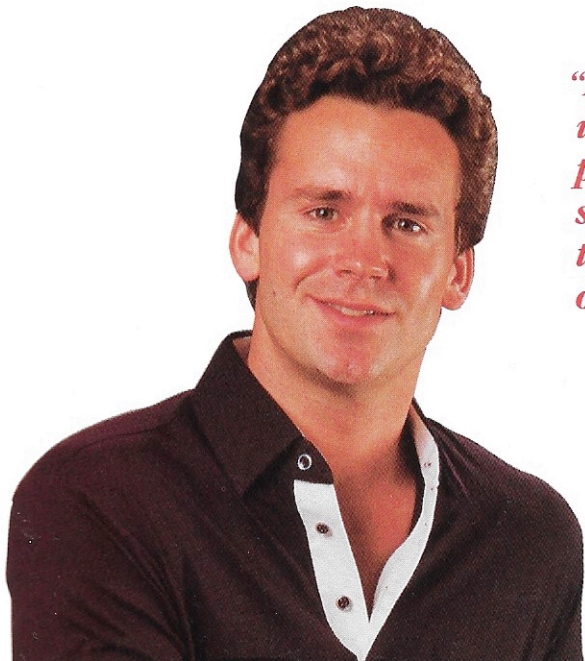
AMF
The Bowler's Catalog



Angle Plus: Exclusive Urethane cover designed for long and medium oil lane conditions. Ball hooks "Plus" boards after oil carry down. "Solid Strike" core provides less ball deflection and more drive through the pins. Sanded finish grabs the lane surface for the final break into the pin area. Medium hardness cover stock, 77-80 Duro-meter. Black Urethane. 12, 13, 14, 15 & 16 lbs. 033-0147.



Brian Voss is the 1988 Bowler of the Year. He also won The PBA National Championships and the True Value Open. His \$225,485 in earnings set a new PBA record for a single year.



"I used the AMF Angle Plus to win the PBA National Championships because it hooked stronger at the back end, and tripped the 10-Pin easier, even on half pocket hits."

Brian Voss

Brian Voss
Member, AMF Staff
of Champions

Purple Angle: Designed for heavily oiled lane surfaces. High coefficient-of-friction Urethane cover grips lane surface for superior hook as ball finishes its slide cycle. Pre-balanced weight block and core for consistent roll. Medium hardness cover stock, 76-78 Duro-meter. Purple Urethane. 12, 14, 15 & 16 lbs. 033-0146.



"You don't get a second chance on the Pro Tour. When the big money is on the line, I reach for the Purple Angle."

Joe Berardi

Joe Berardi
Member, Staff
of Champions



Joe Berardi is the only player to win three PBA titles in 1988: the AC-Delco Classic, the Showboat PBA Doubles Classic and the True Value Open. (in Indianapolis). Joe is also a Bowling Magazine First Team All American as well as runner-up for Bowler of the Year.

Black Angle: The first Urethane Ball. Longer history of quality performance than any other urethane ball. Formulated for a variety of lane conditions. Semi-polished surface allows slide closer to pins before hook and roll take over. "Solid Strike" core keeps pins low for better mix and less deflection. Medium hardness cover stock, 77-79 Durometer. Black Urethane. 12, 13, 14, 15 & 16 lbs. 033-0139.



Blue Angle: Excellent performance on oily lane heads. Pro sand finish grabs at back end for hook and drive into pin area. "Solid Strike" core produces reduced ball deflection at pin impact. Medium hardness Urethane cover, 76-79 Durometer. Blue Urethane. 12, 14, 15 & 16 lbs. 033-0145.



"Whenever you bowl, whatever the lane condition, there is an AMF ball that's just right for you to get the best out of your game."

Dick Weber

Pete Weber

Dick Weber/Pete Weber
Members, Staff
of Champions



Angle LD: Pearlized Urethane cover stock developed for Short Oil (Limited Distance). Angle LD cuts through heavily oiled head area before hooking. "Solid Strike" core and weight block for balanced slide, hook and roll. Excellent second ball for spares. Medium to hard cover stock, 78-81 Durometer. 12, 14, 15 & 16 lbs. Blue Pearl Urethane. 033-0156. Red/Gold Urethane. 033-0155.



Dick and Pete Weber are bowling's most successful father and son team. Dick won the 1988 Showboat Seniors title. His 30 pro titles helped place him in both the PBA and the ABC Halls of Fame. Pete was the winner of the 1988 U.S. Open. His \$100,000 first place prize was the largest of the year.

Classic Pro Roll: For almost two decades the favorite hard rubber ball. Balanced construction provides true roll. Exclusive three dot guidance system for effective tracking. Factory polished for most lane conditions. Black Rubber. 10, 12, 14, 15 & 16 lbs. 033-0044.



"AMF's full line of quality bowling balls offer you a choice of color and weight to suit your style, and at a price you can afford. You will bowl better too, with a custom drilled ball. Talk to the Pro in your Pro-Shop and get the AMF ball that suits you best."

Betty Morris

Betty Morris
Member, Staff
of Champions



Questar Charcoal
12, 14, 15 & 16 lbs.
033-0054



Questar Blue
6, 8, 10, 12, 14, 15 & 16 lbs.
033-0052



Questar Red
6, 8, 10 & 12 lbs.
033-0053



Questar Purple Metallic
10, 12, 14, 15 & 16 lbs.
033-0056

*New for 1989

Questar: Combined strike power of hard polyester with striking pearlied colors of Red, Blue, Charcoal or new Purple Metallic. * Wide variety of weight ranges, 6-16 lbs. for bowlers of all ages and ability. Pearlied Polyester.

Betty Morris has won 17 pro titles, is a 3-time Bowler of the Year and a member of the WIBC Hall of Fame.

Master: Superior full grain black leather. Sturdy nylon carry/shoulder strap with soft leather padding. Detachable wheels. Twin zipper opening for easy access to the interior. Exclusive "Hugger" type ball cups on removable ball stand. Roomy outside zippered storage pockets. Luggage type protective outside wrapper.



Black
Double—035-008-701

Superbag: Scuff-proof body of 420 Denure nylon laminated with P.V.C. on 100% polyester backing. Crush-proof polypropylene support frame. Rugged molded bottom with four affixed wheels. Separate zippered shoe compartment. Roomy 2900 cubic inches of storage space. Removable ball cups. Dual slide nylon zippers. Two popular colors.



Midnight Black
035-012-461

Metalic Silver
035-012-460

Pewter
Double—035-008-643

Pewter
Single—035-008-642



Tourmaster: Smooth outside 420 Denure nylon reversed body. Extra large interior accessed by 270° zipper opening. Outside pockets for shoe and accessory storage. Adjustable shoulder strap. "Gripper" feet bottom for bag protection. Single & Double.



Bronze
Double—035-008-641

Bronze
Single—035-008-640



Black
Double—035-008-618



Black
Single—035-008-616



Burgundy
Double—035-008-634



Burgundy
Single—035-008-633



Deluxe: Oxford nylon fabric. Luggage type clasps on roomy exterior pockets. Adjustable cushioned shoulder strap. Padded carry handles. Easy access zippered pocket. Single & Double.



Silver
Double—035-008-619



Silver
Single—035-008-617



Navy
Double—035-008-630



Navy
Single—035-008-629

Black
Double—035-008-681



Black
Single—035-008-680



Burgundy
Double—035-008-689



Burgundy
Single—035-008-688



Signature II: Heavy-duty reinforced nylon fabric. Outside shirt pocket and inside shoe pockets. Padded handle and shoulder strap. Single & Double.



Silver
Double—035-008-683



Silver
Single—035-008-682



Navy
Double—035-008-687



Navy
Single—035-008-686

AMF Plus: Sturdy vinyl with feel and look of leather. Easy access zipper for shoe pockets and ball cup. Outside pocket with zipper and velcro closures. Heavy-duty shoulder strap with steel clasp. Single & Double.



Black
Double—035-008-524

Black
Single—035-008-523

Camel/Tan
Double—035-008-526

Camel/Tan
Single—035-008-525

Saddle Bag: Grained Oxford vinyl in a contemporary design. Outside accessory storage pockets with velcro closure flap. Roomy inside for ball, shoe and accessory storage. Leather-look "Primo" trim and adjustable shoulder strap. Wrapped reinforced handles.



Forest Green
035-012-411

Gray
035-012-412

Primo Tan
035-012-410

Charcoal
Double—035-008-510

Charcoal
Single—035-008-509

420-D: Durable 420-Denure nylon fabric. Twin zippered exterior access. Inside shoe pocket and ball cup. Permanently affixed adjustable shoulder strap. Wrapped handles with velcro closure. Single & Double (Charcoal Only).



Cranberry
Single—035-008-503

Sand
Single—035-008-507

Mint
Single—035-008-505

Swingline: Bright nylon accented with dark ribbed vinyl. Fixed shoulder strap and reinforced carry handles. Nylon zippered top for access to roomy ball and shoe storage. Five lively colors to choose from.



Navy
035-012-423

Gold
035-012-421

Red/Navy
035-012-422

Green/Blue
035-012-424

Purple
035-012-420



Black Plaid
035-007-904

Tan
035-007-901

Navy Plaid
035-007-905

Light Blue
035-007-902

Red Plaid
035-007-903

Divider: Oxford vinyl body. Full zippered side drop for easy ball access. Molded color coordinated carry handles. Stylish grained vinyl or plaid front panels provide traditional styling with flair.



Royal Blue
035-012-432

Green
035-012-431

Red
035-012-430

Hanover: Weather-proof 420-Denure nylon. Twin zippered interior access. Outside accessory pocket. Reinforced handles. Roomy interior for shoe and ball storage.



Burgundy
035-012-450

Silver
035-012-454

Tan
035-012-453

Keystone: Heavy-duty vinyl. Molded ball cup. Wrapped handles with velcro closure. Roomy interior for shoe storage.



Men's Premiere: 60% cotton/40% polyester for easy care. Always looks smart. 6" continental placket with coordinated AMF buttons. Fancy, reinforced collar. Extra long shirt tail. Distinctive AMF sleeve logo.



Men's Triangles
S, M, L, XL, XXL
021-311-01

Men's Lane
S, M, L, XL
021-301-01

Women's Lady Bowler Mid-Tone
S, M, L, Q
021-365-92

Women's Lady Bowler Bright
S, M, L, Q
021-365-91

The Angle Line: Bold stripes or traditional solids in a 65% polyester/35% cotton blend. Knit collars on stripe shirts (except white) and fancy collars on solid shirts. 6" continental plackets. Contrasting collar and sleeve trim on solid shirts. Distinctive Angle logo on breast pocket. Extra long tail on Men's model. Men's solid sizes: S, M, L, XL & XXL. Men's stripe sizes: S, M, L & XL. Women's solid and stripe sizes: S, M, L & Q.



Cherry/Navy
Men's—021-031-03
Women's—021-015-03

White Stripe
Men's—021-061-52
Women's—021-065-52

Navy/White
Men's—021-031-07
Women's—021-015-07

Putty/Clay/Wineberry Stripe
Men's—021-061-51
Women's—021-065-51

Burgundy/Bone
Men's—021-031-31
Women's—021-015-31

Classic Line: 65% polyester/35% cotton weave for easy care and superior looks. Action shoulder and 3 button continental placket for comfort. Matching AMF buttons and distinctive AMF raised logo on right sleeve. Available in Men's and Women's Brilliant Stripes and Traditional Solids. Men's solid sizes: S, M, L, XL & XXL. Men's stripe sizes: S, M, L & XL. Women's solid and stripe sizes: S, M, L & Q.



Lilac
Women's—021-045-04

Sand/Teal Stripe
Men's—021-071-01
Women's—021-075-01

Silver
Men's—021-041-01

Blue/Cherry Stripe
Men's—021-071-03
Women's—021-075-03

Bone
Men's—021-041-03
Women's—021-045-03

Women's Premiere: 60% cotton/40% polyester for easy care. 6" continental placket with coordinated AMF buttons. Fancy, reinforced collar. Printed lady bowler design in bright or mid-tone colors on white background.



Teal Blue Stripe
Men's—021-061-45
Women's—021-065-45

Black/Silver
Men's—021-031-01
Women's—021-015-01

Cherry Stripe
Men's—021-061-03
Women's—021-065-03

Bronze/Bone
Men's—021-031-36
Women's—021-015-36

Navy Stripe
Men's—021-061-07
Women's—021-065-07



Silver/Blue Stripe
Men's—021-071-02
Women's—021-075-02

Rose
Men's—021-041-02
Women's—021-045-02

"Bowling shirts from AMF add style, comfort and color to your game. Whatever your average, you look better when you wear AMF Shirts."

Leila Wagner

Leila Wagner
Member, Staff
of Champions





"AMF's bowling shoes really fit your game. They lace tightly for firm support. The soles are designed for a controlled slide and they have style."

Cheryl Robinson

Cheryl Robinson
Member, Staff
of Champions

Pro Staff

Right handed—

Men's: 7½-12, 13 & 14 ▶

037-182

◀ Women's: 5½-9, 10 & 11

037-183

Left-handed—

Men's: 7½-12 & 13 ▶

037-186

◀ Women's: 5½-9 & 10

037-187



Pro Staff—Men's & Women's: Traditional lace-to-toe styling in full grain soft Napa leather uppers. Lined quarter and tongue. Reinforced counters. Genuine Goodyear welt. Exclusive AMF "Action Trac" grip sole and chrome tan sliding sole. Neutral beige color. Available in right-handed or left-handed models.

Angle Plus

Men's: 7½-11, 12 & 13 ▶

037-172

◀ Women's: 5½-9 & 10

037-173



Angle Plus—Men's & Women's: Comfort and bowling ease with athletic look. Full leather uppers and soft terry liner. Padded collar and tongue. Full leather outer soles. Men's White Leather, Women's Gray Leather. For right and left-handed bowlers.

Angle II

Men's: 7½-11, 12 & 13 ▶

037-180

◀ Women's: 5½-9 & 10

037-181



Angle II—Men's & Women's: Lightweight nylon and suede leather for comfort and durability. Padded collar and tongue. Genuine leather outer-soles. Men's blue suede and nylon; Women's light blue suede and nylon. For right and left-handed bowlers.



AMF
STAFF OF CHAMP



AMF
AMF Means Business About Bowling

